

**NOTE**  
Access to properties to be maintained.

- NOTES:**
- All signs, markings and safety zones will be in accordance with Traffic Signs Manual.
  - Sign locations are indicative only and exact locations will be determined on site.
  - Works Access and Egress locations to be agreed on site and any changes to the design should be reported.

**Key:**

	Safety Zone		Works Area
	Road Closed		Sign
	Diversions		Cone Line
	Pedestrian Route		Marshal
	Pedestrian Barrier		TM Operative
	Portable traffic signal		Traffic light phase
	Pedestrian ramp (Fixed to ground)		No Parking Cones
	Temporary pedestrian crossing		

**DETAIL B**

Single/Dual carriageway 40mph or less - 450mm cones, spacing 1.5m.  
Single/Dual carriageway 50mph or more - 750mm cones, spacing 1.5m.  
Dual carriageway national speed limit - 750mm cones, spacing 1.5m, relaxation 3m.

**Notes:**

- During darkness, warning lights to BS EN 12352:2006 should be provided in accordance with Table A1.3 (Appendix 1).
- 45° tapers have 1.5m spacing, no relaxations.
- On motorways and NSL AP Duals with hard shoulders, 1m cones will be required for both standard and relaxation works for lead tapers and the facing wall of lane changes.

**DETAIL C1**

Single/Dual carriageway 40mph or less - 450mm traffic cones.  
Single/Dual carriageway 50mph or more - 750mm traffic cones.

**Notes:**

- During darkness, warning lights to BS EN 12352:2006 should be provided in accordance with Table A1.3 (Appendix 1).
- For relaxation to Detail C1 see Table A1.3 (Appendix 1).

Scan QR for location EASTINGS & NORTHINGS:

392945 , 325706  
393758 , 326158

**Permanent Speed Limit**

SAFETY ZONE DIMENSIONS  
Sideways Safety Zone : 1.2m  
Longways Safety Zone: 60m  
ALL DIMENSIONS ARE MINIMA

**Diversion Length**  
0 miles

Distance in Meters					
	Head No 1	Head No 2	Head No 3	Head No 4	
Temporary Traffic Signal Timings					
RED	30	30	30	30	
GREEN	40	40	25	25	
0	50	100	150	200	250
5	10	15	20	25	30
Length Of Works (Meters)					
Maximum GREEN Timings (Seconds)					
0	35	75	40	135	195
Please note that the settings of Maximum Green time should be increased if substantial queues begin to form					
The timings should not be reduced below the initial settings approved					

Revision	By	Checked	Approved	Date	Description



Sign Schedule	Sign Schedule	Sign Schedule	Sign Schedule	Sign Schedule	Sign Schedule
ID: 001 Qty: 3 Ref: 13.9 Schedule 13-9: Temporary Information	ID: 006 Qty: 1 Ref: 13.9 Schedule 13-9: Temporary Information	ID: 011 Qty: 1 Ref: 13.9 Schedule 13-9: Temporary Information	ID: 016 Qty: 1 Ref: 2702 Start of temporary diversion route	ID: 021 Qty: 1 Ref: 2702 Start of temporary diversion route	ID: 026 Qty: 2 Ref: 2702 Start of temporary diversion route
ID: 002 Qty: 1 Ref: 13.9 Schedule 13-9: Temporary Information	ID: 007 Qty: 2 Ref: 7301 Works access	ID: 012 Qty: 1 Ref: 572 Distance ahead to hazard	ID: 017 Qty: 3 Ref: 13.9 Schedule 13-9: Temporary Information	ID: 022 Qty: 3 Ref: 645 End panel	ID: 027 Qty: 1 Ref: 13.9 Schedule 13-9: Temporary Information
ID: 003 Qty: 1 Ref: 13.9 Schedule 13-9: Temporary Information	ID: 008 Qty: 2 Ref: 506.1 Side road ahead (variant)	ID: 013 Qty: 2 Ref: 7010-FP-13-9 Nature of temporary hazard ahead - Road Closed	ID: 018 Qty: 3 Ref: 543 Traffic signals ahead	ID: 023 Qty: 10 Ref: 7001 Road works ahead	ID: 028 Qty: 2 Ref: 7010-FP-13-9 Nature of temporary hazard ahead - Road Ahead Closed
ID: 004 Qty: 1 Ref: 572 Distance ahead to hazard	ID: 009 Qty: 1 Ref: 13.9 Schedule 13-9: Temporary Information	ID: 014 Qty: 1 Ref: 612 No right turn	ID: 019 Qty: 3 Ref: 518 Single file traffic	ID: 024 Qty: 3 Ref: 610 Keep left	
ID: 005 Qty: 1 Ref: 13.9 Schedule 13-9: Temporary Information	ID: 010 Qty: 1 Ref: 13.9 Schedule 13-9: Temporary Information	ID: 015 Qty: 3 Ref: 517 Road narrows on one side only ahead - right	ID: 020 Qty: 3 Ref: 517 Road narrows on one side only ahead - left	ID: 025 Qty: 5 Ref: 7011.1 4 Way Control - Wait here until green light shows	

FOR DIVERSION DETAILS REFER TO SHEET 2

Title SANDON ROAD REALIGNMENT PHASE 1 AND 2 ROAD CLOSURE WITH SIGNALS

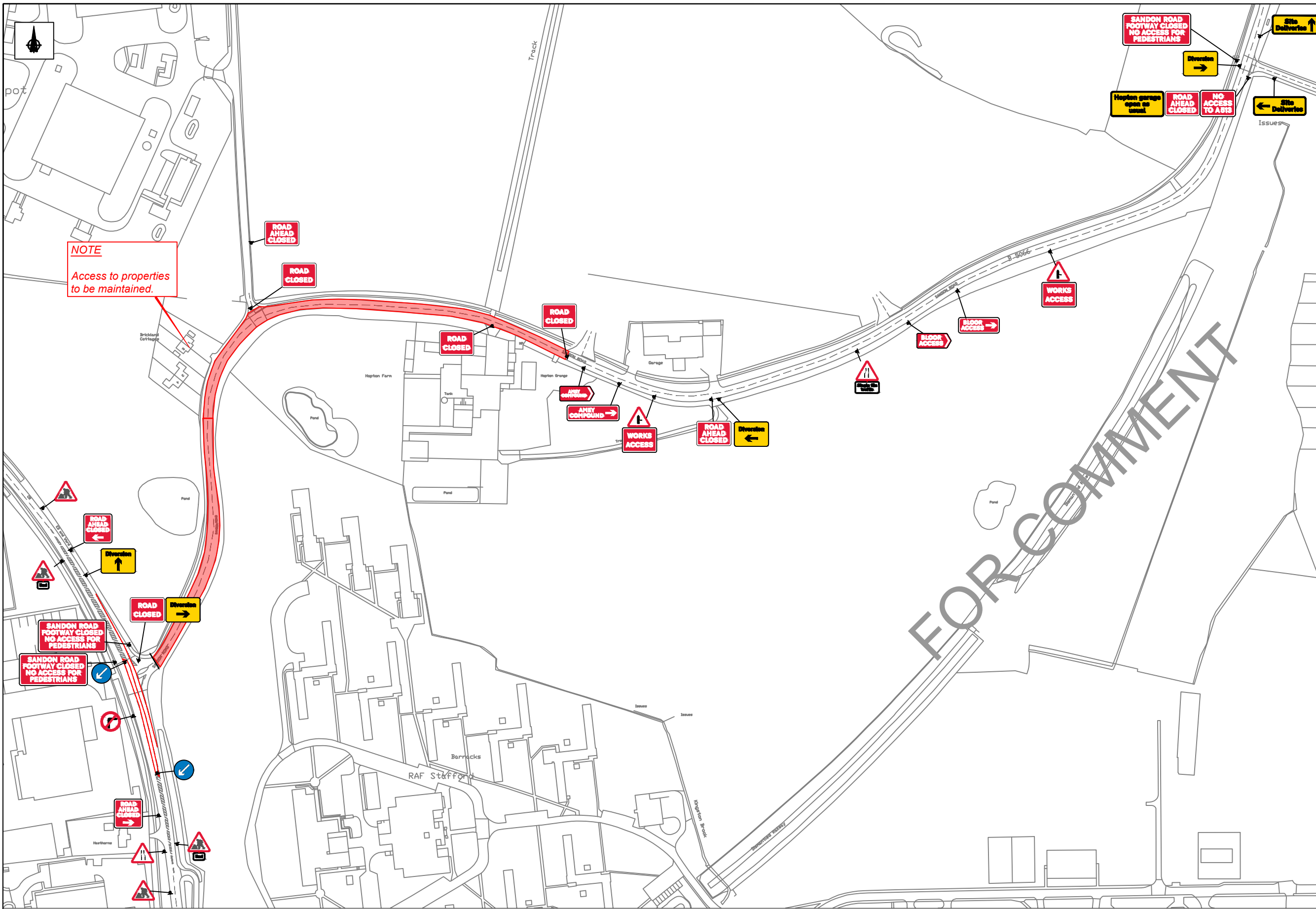
SHEET 1

Designed	DP	16.09.25	Eng Chk.	x	x
Drawn	DP	16.09.25	Coordination	x	x
Dwg Chk.	DS	16.09.25	Approved	x	x

Scale at A3 NTS Project x Status X

Drawing No AUX-TTM-AMEY-458-SANDON\_RD-STAFFORD-PH1\_2 Rev X

A3



**NOTE**  
Access to properties to be maintained.

- NOTES:**
- All signs, markings and safety zones will be in accordance with Traffic Signs Manual.
  - Sign locations are indicative only and exact locations will be determined on site.
  - Works Access and Egress locations to be agreed on site and any changes to the design should be reported.

**Key:**

	Safety Zone		Works Area
	Road Closed		Sign
	Diversions		Cone Line
	Pedestrian Route		Marshal
	Pedestrian Barrier		TM Operative
	Portable traffic signal		Traffic light phase
	Pedestrian ramp (Fixed to ground)		No Parking Cones
	Temporary pedestrian crossing		

**DETAIL B**

Single/Dual carriageway 40mph or less - 450mm cones, spacing 1.5m.  
Single/Dual carriageway 50mph or more - 750mm cones, spacing 1.5m.  
Dual carriageway national speed limit - 750mm cones, spacing 1.5m, relaxation 3m.

**Notes:**

- During darkness, warning lights to BS EN 12352:2006 should be provided in accordance with Table A1.3 (Appendix 1).
- 45° tapers have 1.5m spacing, no relaxations.
- On motorways and NSL AP Duals with hard shoulders, 1m cones will be required for both standard and relaxation works for lead tapers and the facing wall of lane changes.

**DETAIL C1**

Single/Dual carriageway 40mph or less - 450mm traffic cones.  
Single/Dual carriageway 50mph or more - 750mm traffic cones.

**Notes:**

- During darkness, warning lights to BS EN 12352:2006 should be provided in accordance with Table A1.3 (Appendix 1).
- For relaxation to Detail C1 see Table A1.3 (Appendix 1).

Scan QR for location EASTINGS & NORTHINGS:

392945 , 325706  
393758 , 326158

**Permanent Speed Limit**

SAFETY ZONE DIMENSIONS  
Sideways Safety Zone : 1.2m  
Longways Safety Zone: 60m  
ALL DIMENSIONS ARE MINIMA

**Diversion Length**  
0 miles

Revision	By	Checked	Approved	Date	Description



Sign Schedule	Sign Schedule	Sign Schedule	Sign Schedule	Sign Schedule
ID: 001 Qty: 3 Ref: 13.9 Schedule 13-9: Temporary Information	ID: 006 Qty: 1 Ref: 13.9 Schedule 13-9: Temporary Information	ID: 011 Qty: 1 Ref: 13.9 Schedule 13-9: Temporary Information	ID: 016 Qty: 1 Ref: 517 Schedule 13-9: Temporary Information	ID: 021 Qty: 1 Ref: 2702 Schedule 13-9: Temporary Information
ID: 002 Qty: 1 Ref: 518 Schedule 13-9: Temporary Information	ID: 007 Qty: 1 Ref: 13.9 Schedule 13-9: Temporary Information	ID: 012 Qty: 1 Ref: 13.9 Schedule 13-9: Temporary Information	ID: 017 Qty: 1 Ref: 2702 Schedule 13-9: Temporary Information	ID: 022 Qty: 2 Ref: 2702 Schedule 13-9: Temporary Information
ID: 003 Qty: 1 Ref: 517 Schedule 13-9: Temporary Information	ID: 008 Qty: 2 Ref: 7301 Schedule 13-9: Temporary Information	ID: 013 Qty: 4 Ref: 7010-FP-13-9 Schedule 13-9: Temporary Information	ID: 018 Qty: 2 Ref: 610 Schedule 13-9: Temporary Information	ID: 023 Qty: 1 Ref: 13.9 Schedule 13-9: Temporary Information
ID: 004 Qty: 1 Ref: 13.9 Schedule 13-9: Temporary Information	ID: 009 Qty: 2 Ref: 506.1 Schedule 13-9: Temporary Information	ID: 014 Qty: 2 Ref: 645 Schedule 13-9: Temporary Information	ID: 019 Qty: 2 Ref: 13.9 Schedule 13-9: Temporary Information	ID: 024 Qty: 3 Ref: 7010-FP-13-9 Schedule 13-9: Temporary Information
ID: 005 Qty: 1 Ref: 13.9 Schedule 13-9: Temporary Information	ID: 010 Qty: 1 Ref: 13.9 Schedule 13-9: Temporary Information	ID: 015 Qty: 1 Ref: 612 Schedule 13-9: Temporary Information	ID: 020 Qty: 4 Ref: 7001 Schedule 13-9: Temporary Information	

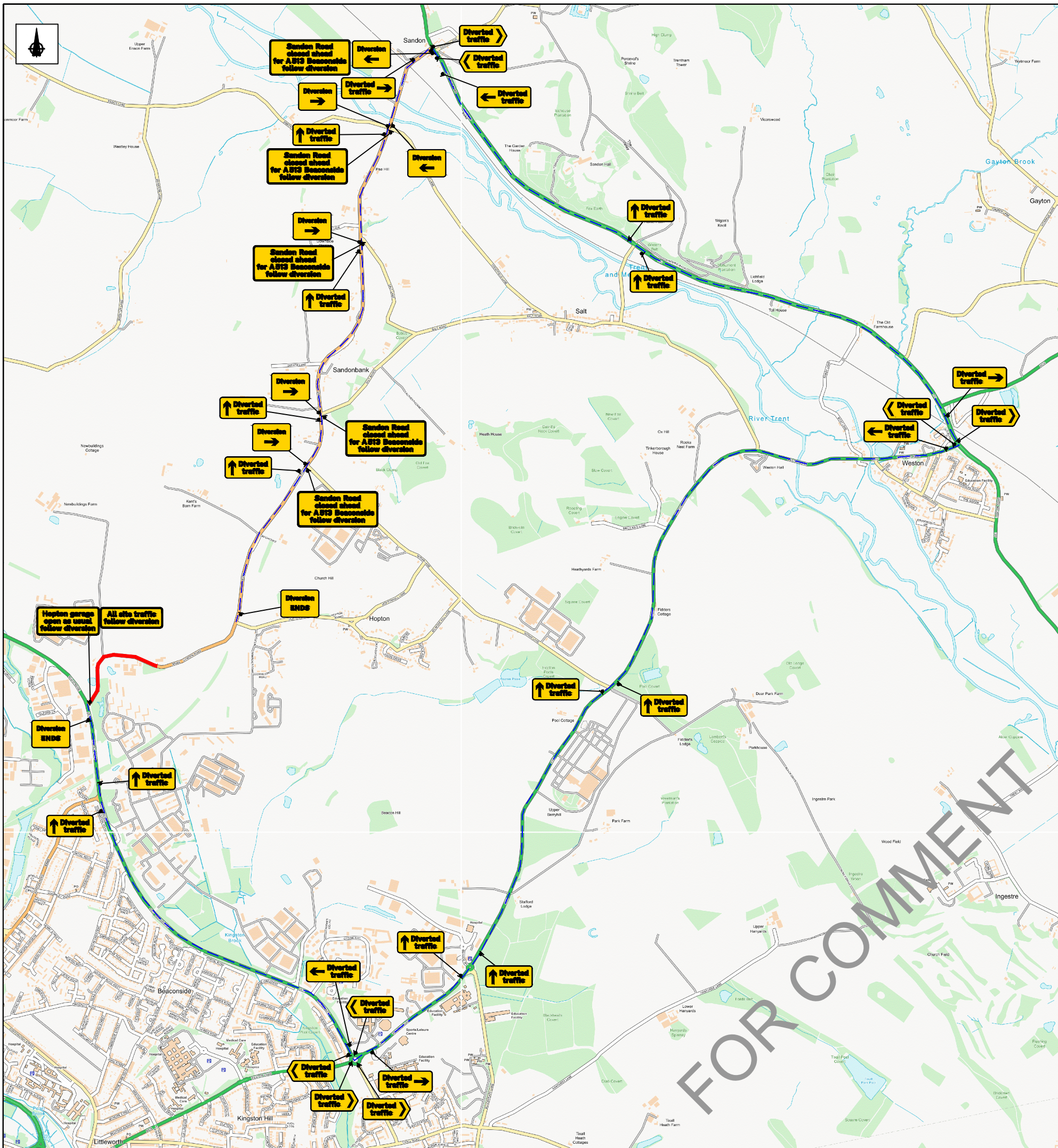
FOR DIVERSION DETAILS REFER TO SHEET 2

Title SANDON ROAD REALIGNMENT PHASE 1 AND 2 - NIGHTS ROAD CLOSURE WITH SIGNALS

SHEET 1

Drawn	DP	16.09.25	Eng Chk.	x	x
Dwg Chk.	DS	16.09.25	Coordination	x	x
Scale at A3	NTS	Project	x	Status	X
Drawing No	AUX-TM-AMEY-459-SANDON_RD-STAFFORD-PH1_2-NIGHTS	Rev	X		

A3



Sign Schedule	
	ID: 001 Qty: 1 Ref: 13.9 Schedule 13-9: Temporary Information
	ID: 002 Qty: 1 Ref: 13.9 Schedule 13-9: Temporary Information
	ID: 003 Qty: 4 Ref: 2702 Start of temporary diversion route
	ID: 004 Qty: 2 Ref: 2702 Start of temporary diversion route
	ID: 005 Qty: 5 Ref: 13.9 Schedule 13-9: Temporary Information
	ID: 006 Qty: 3 Ref: 2703 Direction of temporary diversion route from junction ahead
	ID: 007 Qty: 3 Ref: 2703 Direction of temporary diversion route from junction ahead
	ID: 008 Qty: 4 Ref: 2704 Direction of temporary diversion route
	ID: 009 Qty: 2 Ref: 2702 End of temporary diversion route
	ID: 010 Qty: 12 Ref: 2703 Direction of temporary diversion route from junction ahead
	ID: 011 Qty: 4 Ref: 2704 Direction of temporary diversion route

**NOTES:**

- All signs, markings and safety zones will be in accordance with Traffic Signs Manual.
- Sign locations are indicative only and exact locations will be determined on site.
- Works Access and Egress locations to be agreed on site and any changes to the design should be reported.

**Key:**

	Safety Zone		Works Area
	Road Closed		Sign
	Diversion		Cone Line
	Pedestrian Route		Marshal
	Pedestrian Barrier		TM Operative
	Portable traffic signal		Traffic light phase
	Pedestrian ramp (Fixed to ground)		No Parking Cones
	Temporary pedestrian crossing		

**DETAIL B**

Single/Dual carriageway 40mph or less - 450mm cones, spacing 1.5m.  
Single/Dual carriageway 50mph or more - 750mm cones, spacing 1.5m.  
Dual carriageway national speed limit - 750mm cones, spacing 1.5m, relaxation 3m.

**Notes:**

- During darkness, warning lights to BS EN 12352:2006 should be provided in accordance with Table A1.3 (Appendix 1).
- 45° tapered cones have 1.5m spacing, no relaxations.
- On motorways and NSL AP Quads with hard shoulders, 1m cones will be required for both standard and relaxation works for lead tapers and the facing wall of lane changes.

**DETAIL C1**

Single/Dual carriageway 40mph or less - 450mm traffic cones.  
Single/Dual carriageway 50mph or more - 750mm traffic cones.

**Notes:**

- During darkness, warning lights to BS EN 12352:2006 should be provided in accordance with Table A1.3 (Appendix 1).
- For relaxation to Detail C1 see Table A1.3 (Appendix 1).

Scan QR for location EASTINGS & NORTHINGS:

392945 , 325706  
393758 , 326158

**Permanent Speed Limit**

SAFETY ZONE DIMENSIONS  
Sideways Safety Zone : 1.2m  
Longways Safety Zone: 60m  
ALL DIMENSIONS ARE MINIMA

**Diversion Length**  
10 miles

Revision	By	Checked	Approved	Date	Description



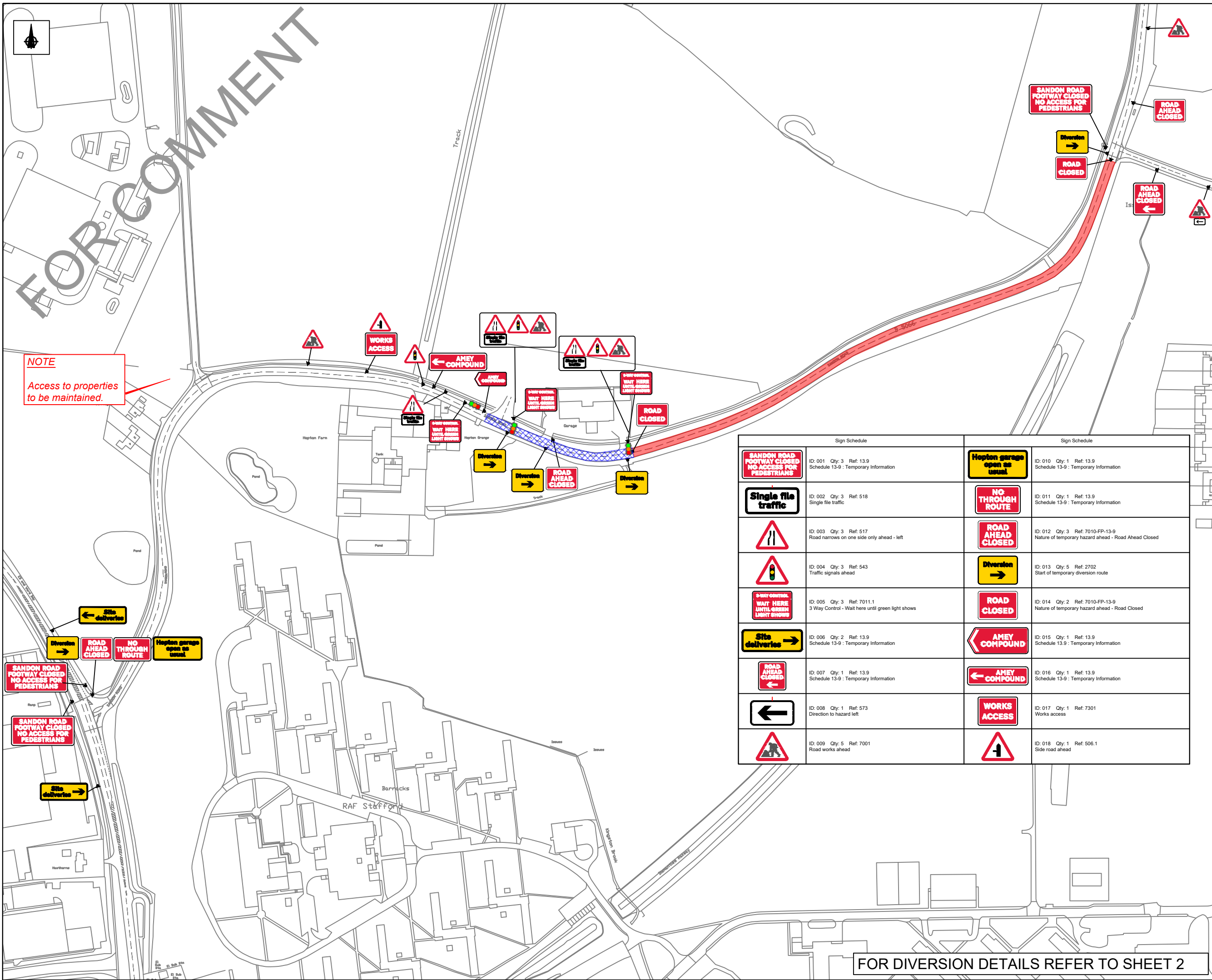
**Title** SANDON ROAD REALIGNMENT  
PHASE 1 AND 2 - NIGHTS  
ROAD CLOSURE WITH SIGNALS

**SHEET 2**

Designed	DP	18.09.25	Eng. Chk.	x	x	
Drawn	DP	18.09.25	Coordination	x	x	
Dwg. Chk.	DS	18.09.25	Approved	x	x	
Scale at A3	NTS	Project	x	Status	X	
Drawing No	AUX-TM-AMEY-459-SANDON_RD-STAFFORD-PH1_2-NIGHTS				Rev	X
					A3	

FOR COMMENT

NOTE  
Access to properties to be maintained.



- NOTES:
- All signs, markings and safety zones will be in accordance with Traffic Signs Manual.
  - Sign locations are indicative only and exact locations will be determined on site.
  - Works Access and Egress locations to be agreed on site and any changes to the design should be reported.

Key:

- Safety Zone
- Road Closed
- Diversions
- Pedestrian Route
- Pedestrian Barrier
- Portable traffic signal
- Pedestrian ramp (Fixed to ground)
- Temporary pedestrian crossing
- Works Area
- Sign
- Cone Line
- Marshal
- TM Operative
- Traffic light phase
- No Parking Cones

DETAIL B

Single/Dual carriageway 40mph or less - 450mm cones, spacing 1.5m.  
 Single/Dual carriageway 50mph or more - 750mm cones, spacing 1.5m.  
 Dual carriageway national speed limit - 750mm cones, spacing 1.5m, relaxation 3m.

Notes:

- During darkness, warning lights to BS EN 12352:2006 should be provided in accordance with Table A1.3 (Appendix 1).
- 45° tapers have 1.5m spacing, no relaxations.
- On motorways and NSL AP Duals with hard shoulders, 1m cones will be required for both standard and relaxation works for lead tapers and the facing wall of lane changes.

DETAIL C1

Single/Dual carriageway 40mph or less - 450mm traffic cones.  
 Single/Dual carriageway 50mph or more - 750mm traffic cones.

Notes:

- During darkness, warning lights to BS EN 12352:2006 should be provided in accordance with Table A1.3 (Appendix 1).
- For relaxation to Detail C1 see Table A1.3 (Appendix 1).

Scan QR for location EASTINGS & NORTHINGS:

392945 , 325706  
 393758 , 326158

**Permanent Speed Limit**

SAFETY ZONE DIMENSIONS  
 Sideways Safety Zone : 1.2m  
 Longways Safety Zone: 60m  
 ALL DIMENSIONS ARE MINIMA

**Diversion Length**  
 0 miles

Sign Schedule		Sign Schedule	
	ID: 001 Qty: 3 Ref: 13.9 Schedule 13-9 : Temporary Information		ID: 010 Qty: 1 Ref: 13.9 Schedule 13-9 : Temporary Information
	ID: 002 Qty: 3 Ref: 518 Single file traffic		ID: 011 Qty: 1 Ref: 13.9 Schedule 13-9 : Temporary Information
	ID: 003 Qty: 3 Ref: 517 Road narrows on one side only ahead - left		ID: 012 Qty: 3 Ref: 7010-FP-13-9 Nature of temporary hazard ahead - Road Ahead Closed
	ID: 004 Qty: 3 Ref: 543 Traffic signals ahead		ID: 013 Qty: 5 Ref: 2702 Start of temporary diversion route
	ID: 005 Qty: 3 Ref: 7011.1 3 Way Control - Wait here until green light shows		ID: 014 Qty: 2 Ref: 7010-FP-13-9 Nature of temporary hazard ahead - Road Closed
	ID: 006 Qty: 2 Ref: 13.9 Schedule 13-9 : Temporary Information		ID: 015 Qty: 1 Ref: 13.9 Schedule 13.9 : Temporary Information
	ID: 007 Qty: 1 Ref: 13.9 Schedule 13-9 : Temporary Information		ID: 016 Qty: 1 Ref: 13.9 Schedule 13-9 : Temporary Information
	ID: 008 Qty: 1 Ref: 573 Direction to hazard left		ID: 017 Qty: 1 Ref: 7301 Works access
	ID: 009 Qty: 5 Ref: 7001 Road works ahead		ID: 018 Qty: 1 Ref: 506.1 Side road ahead

Revision	By	Checked	Approved	Date	Description



Title SANDON ROAD REALIGNMENT  
 PHASE 3 AND 4  
 TRAFFIC SIGNALS AND ROAD CLOSURE

SHEET 1

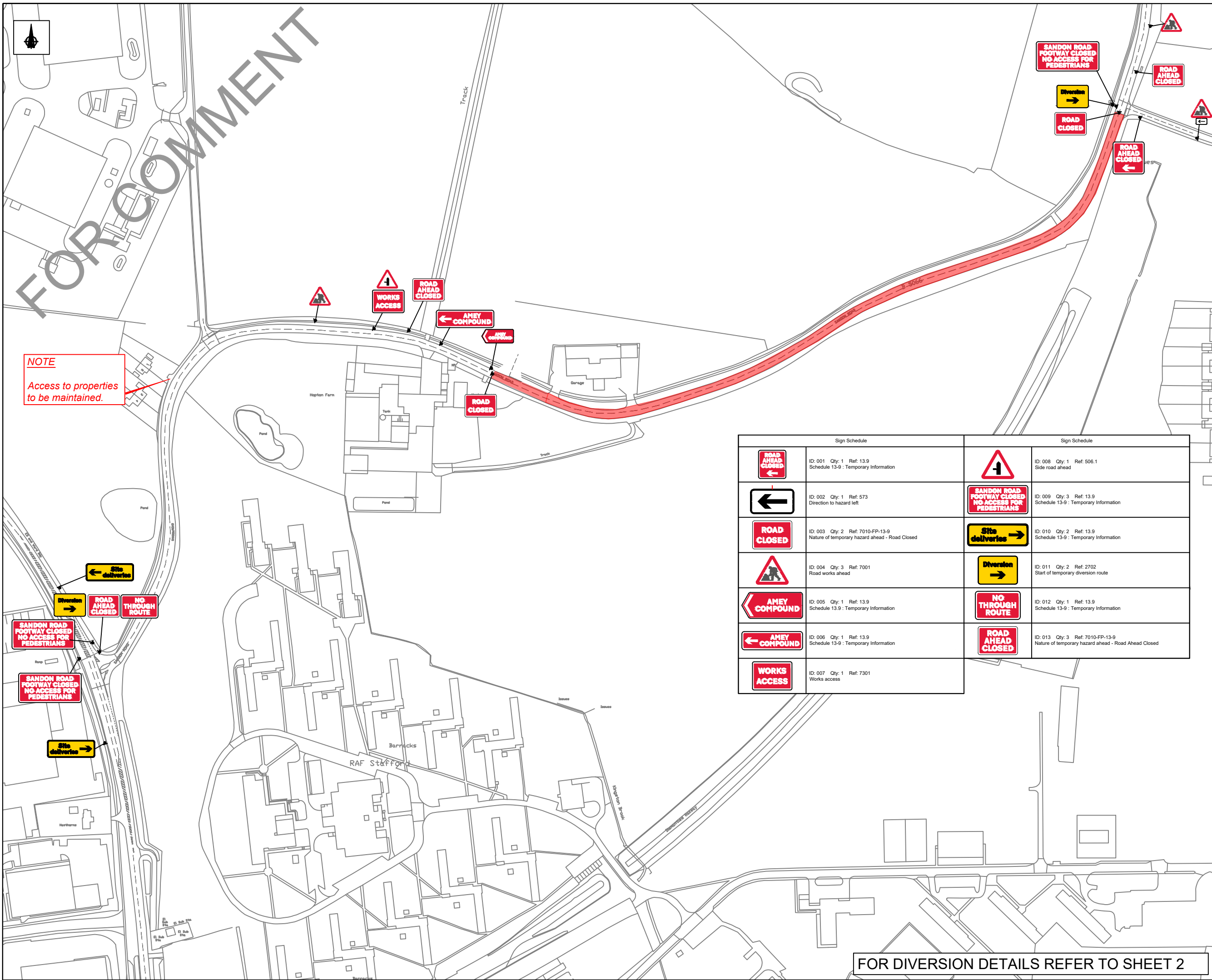
Designed	DP	16.09.25	Eng. Chk.	x	x
Drawn	DP	16.09.25	Coordination	x	x
Dwg Chk.	DS	16.09.25	Approved	x	x
Scale at A3	NTS	Project	x	Status	X
Drawing No	AUX-TTM-AMEY-460-SANDON_RD-STAFFORD-PH3_4	Rev	X		

A3

FOR DIVERSION DETAILS REFER TO SHEET 2

FOR COMMENT

NOTE  
Access to properties to be maintained.



- NOTES:
- All signs, markings and safety zones will be in accordance with Traffic Signs Manual.
  - Sign locations are indicative only and exact locations will be determined on site.
  - Works Access and Egress locations to be agreed on site and any changes to the design should be reported.

Key:

	Safety Zone		Works Area
	Road Closed		Sign
	Diversions		Cone Line
	Pedestrian Route		Marshal
	Pedestrian Barrier		TM Operative
	Portable traffic signal		Traffic light phase
	Pedestrian ramp (Fixed to ground)		No Parking Cones
	Temporary pedestrian crossing		

DETAIL B

Single/Dual carriageway 40mph or less - 450mm cones, spacing 1.5m.  
Single/Dual carriageway 50mph or more - 750mm cones, spacing 1.5m.  
Dual carriageway national speed limit - 750mm cones, spacing 1.5m, relaxation 3m.

Notes:  
1) During darkness, warning lights to BS EN 12352:2006 should be provided in accordance with Table A1.3 (Appendix 1).  
2) 45° tapers have 1.5m spacing, no relaxations.  
3) On motorways and NSL AP Duals with hard shoulders, 1m cones will be required for both standard and relaxation works for lead tapers and the facing wall of lane changes.

DETAIL C1

Single/Dual carriageway 40mph or less - 450mm traffic cones.  
Single/Dual carriageway 50mph or more - 750mm traffic cones.

Notes:  
1) During darkness, warning lights to BS EN 12352:2006 should be provided in accordance with Table A1.3 (Appendix 1).  
2) For relaxation to Detail C1 see Table A1.3 (Appendix 1).

Sign Schedule		Sign Schedule	
	ID: 001 Qty: 1 Ref: 13.9 Schedule 13-9 : Temporary Information		ID: 008 Qty: 1 Ref: 506.1 Side road ahead
	ID: 002 Qty: 1 Ref: 573 Direction to hazard left		ID: 009 Qty: 3 Ref: 13.9 Schedule 13-9 : Temporary Information
	ID: 003 Qty: 2 Ref: 7010-FP-13-9 Nature of temporary hazard ahead - Road Closed		ID: 010 Qty: 2 Ref: 13.9 Schedule 13-9 : Temporary Information
	ID: 004 Qty: 3 Ref: 7001 Road works ahead		ID: 011 Qty: 2 Ref: 2702 Start of temporary diversion route
	ID: 005 Qty: 1 Ref: 13.9 Schedule 13-9 : Temporary Information		ID: 012 Qty: 1 Ref: 13.9 Schedule 13-9 : Temporary Information
	ID: 006 Qty: 1 Ref: 13.9 Schedule 13-9 : Temporary Information		ID: 013 Qty: 3 Ref: 7010-FP-13-9 Nature of temporary hazard ahead - Road Ahead Closed
	ID: 007 Qty: 1 Ref: 7301 Works access		

Scan QR for location EASTINGS & NORTHINGS:

392945 , 325706  
393758 , 326158

**Permanent Speed Limit**

SAFETY ZONE DIMENSIONS  
Sideways Safety Zone : 1.2m  
Longways Safety Zone: 60m  
ALL DIMENSIONS ARE MINIMA

**Diversion Length**  
0 miles

Revision	By	Checked	Approved	Date	Description

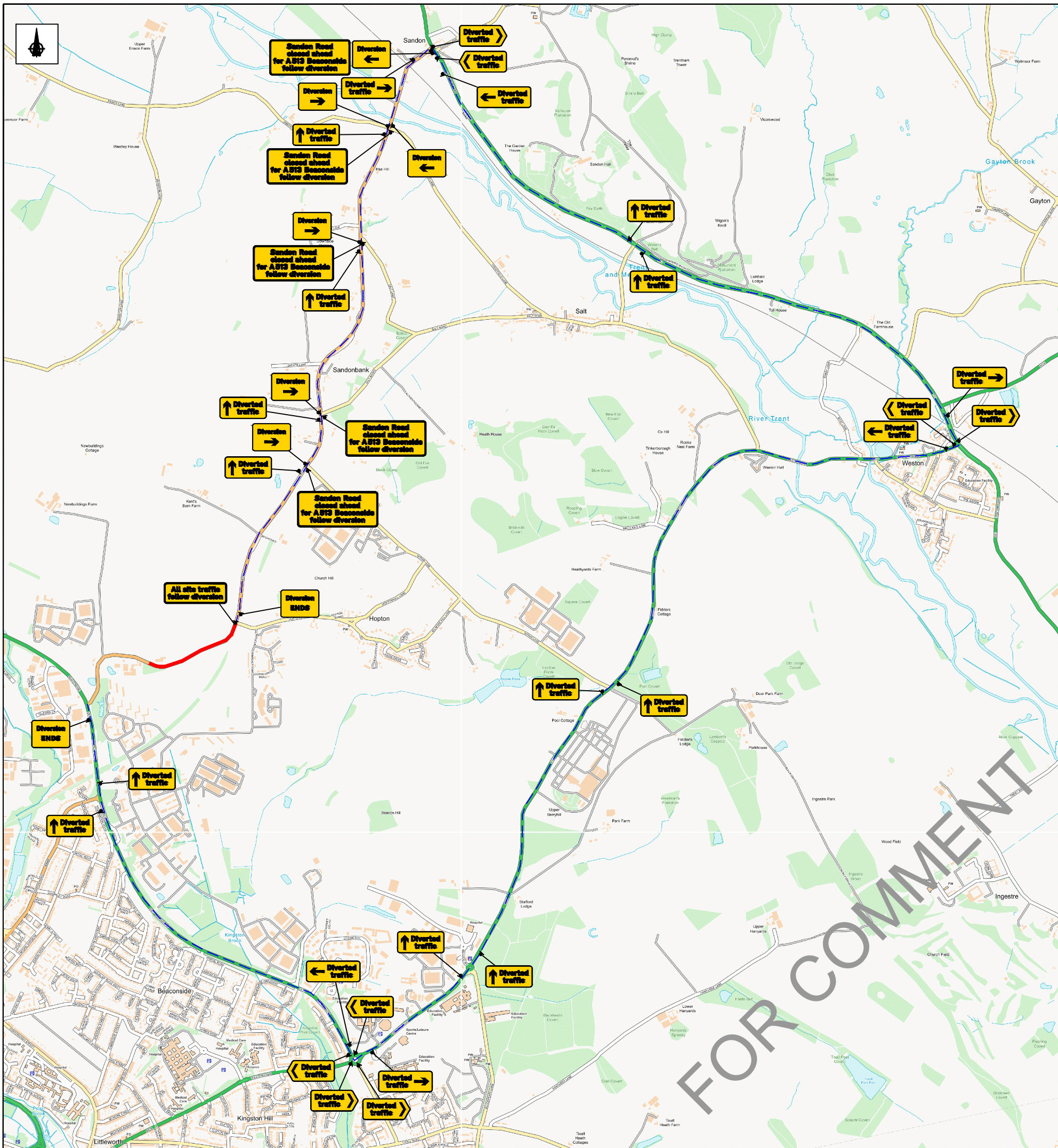


Title SANDON ROAD REALIGNMENT  
PHASE 3 AND 4 - NIGHTS  
ROAD CLOSURE

SHEET 1

Designed	DP	16.09.25	Eng Chk.	x	x	
Drawn	DP	16.09.25	Coordination	x	x	
Dwg Chk.	DS	16.09.25	Approved	x	x	
Scale at A3	NTS	Project	x	Status	X	
Drawing No	AUX-TM-AMEY-461-SANDON_RD-STAFFORD-PH3_4-NIGHTS				Rev	X
						A3

FOR DIVERSION DETAILS REFER TO SHEET 2



Sign Schedule	
	ID: 001 Qty: 1 Ref: 13.9 Schedule 13-9: Temporary Information
	ID: 003 Qty: 4 Ref: 2702 Start of temporary diversion route
	ID: 004 Qty: 2 Ref: 2702 Start of temporary diversion route
	ID: 005 Qty: 5 Ref: 13.9 Schedule 13-9: Temporary Information
	ID: 006 Qty: 3 Ref: 2703 Direction of temporary diversion route from junction ahead
	ID: 007 Qty: 3 Ref: 2703 Direction of temporary diversion route from junction ahead
	ID: 008 Qty: 4 Ref: 2704 Direction of temporary diversion route
	ID: 009 Qty: 2 Ref: 2702 End of temporary diversion route
	ID: 010 Qty: 12 Ref: 2703 Direction of temporary diversion route from junction ahead
	ID: 011 Qty: 4 Ref: 2704 Direction of temporary diversion route

- NOTES:
- All signs, markings and safety zones will be in accordance with Traffic Signs Manual.
  - Sign locations are indicative only and exact locations will be determined on site.
  - Works Access and Egress locations to be agreed on site and any changes to the design should be reported.

Key:

	Safety Zone		Works Area
	Road Closed		Sign
	Diversion		Cone Line
	Pedestrian Route		Marshal
	Pedestrian Barrier		TM Operative
	Portable traffic signal		Traffic light phase
	Pedestrian ramp (Fixed to ground)		No Parking Cones
	Temporary pedestrian crossing		

**DETAIL B**

Single/Dual carriageway 40mph or less - 450mm cones, spacing 1.5m.  
Single/Dual carriageway 50mph or more - 750mm cones, spacing 1.5m, relaxation 3m.

Notes:  
1) During darkness, warning lights to BS EN 12352:2006 should be provided in accordance with Table A1.3 (Appendix 1).  
2) 45° tapered have 1.5m spacing, no relaxations.  
3) On motorways and NSL AP Quads with hard shoulders, 1m cones will be required for both standard and relaxation works for lead tapers and the facing wall of lane changes.

**DETAIL C1**

Single/Dual carriageway 40mph or less - 450mm traffic cones.  
Single/Dual carriageway 50mph or more - 750mm traffic cones.

Notes:  
1) During darkness, warning lights to BS EN 12352:2006 should be provided in accordance with Table A1.3 (Appendix 1).  
2) For relaxation to Detail C1 see Table A1.3 (Appendix 1).

Scan QR for location EASTINGS & NORTHINGS:

392945 , 325706  
393758 , 326158

**Permanent Speed Limit**

SAFETY ZONE DIMENSIONS  
Sideways Safety Zone : 1.2m  
Longways Safety Zone: 60m  
ALL DIMENSIONS ARE MINIMA

**Diversion Length**  
10 miles

Revision	By	Checked	Approved	Date	Description



Title SANDON ROAD REALIGNMENT  
PHASE 3 AND 4 - NIGHTS  
ROAD CLOSURE

SHEET 2

Designed	DP	18.09.25	Eng. Chk.	x	x	
Drawn	DP	18.09.25	Coordination	x	x	
Dwg Chk.	DS	18.09.25	Approved	x	x	
Scale at A3	NTS	Project	x	Status	X	
Drawing No	AUX-TM-AMEY-461-SANDON_RD-STAFFORD-PH3_4-NIGHTS				Rev	X
						A3