

NOTES:

- All signs, markings and safety zones will be in accordance with Traffic Signs Manual.
- Sign locations are indicative only and exact locations will be determined on site.
- Works Access and Egress locations to be agreed on site and any changes to the design should be reported.

Key:

- Safety Zone (Red hatched)
- Road Closed (Red line)
- Diversions (Blue dashed line)
- Pedestrian Route (Green dashed line)
- Pedestrian Barrier (Black line)
- Portable traffic signal (Traffic light icon)
- Pedestrian ramp (Fixed to ground) (Yellow rectangle)
- Temporary pedestrian crossing (Green rectangle)
- Works Area (Blue hatched)
- Sign (Black circle)
- Cone Line (Red dashed line)
- Marshal (Person icon)
- TM Operative (Person icon)
- Traffic light phase (Traffic light icon)
- No Parking Cones (Yellow rectangle)

DETAIL B

Single/Dual carriageway 40mph or less - 450mm cones, spacing 1.5m.
 Single/Dual carriageway 50mph or more - 750mm cones, spacing 1.5m.
 Dual carriageway national speed limit - 750mm cones, spacing 1.5m, relaxation 3m.

Notes:

- During darkness, warning lights to BS EN 12352:2006 should be provided in accordance with Table A1.3 (Appendix 1).
- 45° tapered have 1.5m spacing, no relaxations.
- On motorways and NSL AP Duals with hard shoulders, 1m cones will be required for both standard and relaxation works for lead tapers and the facing wall of lane changes.

DETAIL C1

Single/Dual carriageway 40mph or less - 450mm traffic cones.
 Single/Dual carriageway 50mph or more - 750mm traffic cones.

Notes:

- During darkness, warning lights to BS EN 12352:2006 should be provided in accordance with Table A1.3 (Appendix 1).
- For relaxation to Detail C1 see Table A1.3 (Appendix 1).

Scan QR for location EASTINGS & NORTHINGS:
402650 , 347699

Permanent Speed Limit

SAFETY ZONE DIMENSIONS
 Sideways Safety Zone : 1.2m
 Longways Safety Zone: 60m
 ALL DIMENSIONS ARE MINIMA

Diversion Length
4.5 miles

USRN: 37700127
 FOXT ROAD, FOXT

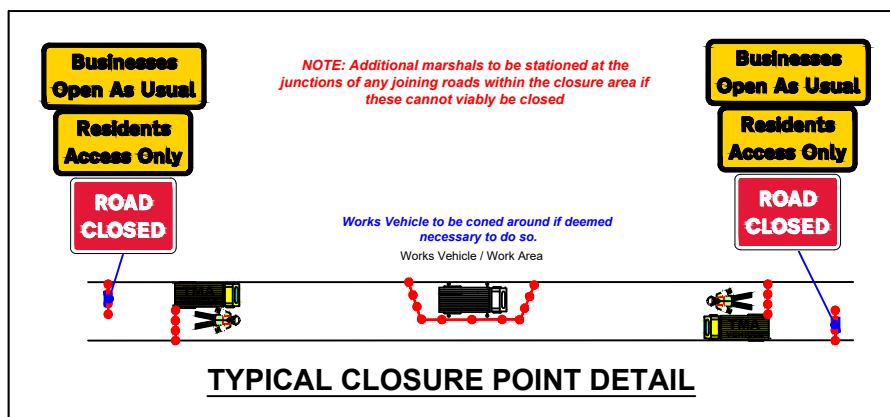
Revision	By	Checked	Approved	Date	Description

NOTE

Diversion to be driven prior to the road closure being installed.

Plans for any road closure should be discussed by the designer with the police and any relevant Highways Authorities, if traffic is being diverted on to their network.

Sign Schedule		Sign Schedule		Sign Schedule	
	ID: 001 Qty: 1 Ref: 572 Distance ahead to hazard		ID: 006 Qty: 4 Ref: 2703 Direction of temporary diversion route from junction ahead		ID: 011 Qty: 1 Ref: 573 Direction to hazard right
	ID: 002 Qty: 3 Ref: 2703 Direction of temporary diversion route from junction ahead		ID: 007 Qty: 4 Ref: 2704 Direction of temporary diversion route		ID: 012 Qty: 1 Ref: 573 Direction to hazard left
	ID: 003 Qty: 3 Ref: 2704 Direction of temporary diversion route		ID: 008 Qty: 2 Ref: 2702 Start of temporary diversion route		ID: 013 Qty: 3 Ref: 7001 Road works ahead
	ID: 004 Qty: 4 Ref: 2703 Direction of temporary diversion route from junction ahead		ID: 009 Qty: 2 Ref: 7010-FP-13-9 Nature of temporary hazard ahead - Road Closed		ID: 014 Qty: 5 Ref: 2702 Start of temporary diversion route
	ID: 005 Qty: 2 Ref: 2702 End of temporary diversion route		ID: 010 Qty: 2 Ref: TFL 13.9 RAEC Road closed except cycles		ID: 015 Qty: 6 Ref: 7010-FP-13-9 Nature of temporary hazard ahead - Road Ahead Closed



Amey

Title: FOXT ROAD, FROGHALL, ST10 2HJ
 ROAD CLOSURE - DIVERSION

SHEET 1

Designed	DP	30.10.25	Eng Chk.	x	x
Drawn	DP	30.10.25	Coordination	x	x
Dwg Chk.	DS	30.10.25	Approved	x	x

Scale at A3: NTS Project: x Status: X

Drawing No: AUX-TTM-AMEY-572-FOXT_ROAD-FROGHALL-RC_DIV Rev: X

A3