

14/16
1308

**PUBLIC PATH DIVERSION AND DEFINITIVE MAP AND STATEMENT
MODIFICATION ORDER**

HIGHWAYS ACT 1980

WILDLIFE & COUNTRYSIDE ACT 1981

STAFFORDSHIRE COUNTY COUNCIL

**(PUBLIC FOOTPATH NO. 21 (PART) STOWE-BY-CHARTLEY PARISH)
PUBLIC PATH DIVERSION AND DEFINITIVE MAP AND STATEMENT
MODIFICATION ORDER 2014**

This Order is made by Staffordshire County Council ("the authority") under Section 119 of the Highways Act 1980 ("the 1980 Act") because it appears to the authority that in the interests of the owner of the land crossed by the footpath described in paragraph 1 of this order, it is expedient that the line of the path should be diverted.

This Order is also made under Section 53A(2) of the Wildlife & Countryside Act 1981 ("the 1981 Act") because it appears to the authority that the Definitive Map and Statement for the Borough of Stafford require modification in consequence of the occurrence of an event specified in Section 53(3)(a)(i) of the 1981 Act, namely the diversion (as authorised by this Order) of a highway shown or required to be shown in the Map and Statement.

The landowner has agreed to defray any expenses which are incurred in bringing the new site of the path into a fit condition for use by the public.

Stafford Borough Council have been consulted as to the making of the Order as required by Section 120(2) of the 1980 Act.

BY THIS ORDER

1. The public right of way over the land situate at Stowe-by-Chartley and shown by a bold continuous line on the map contained in this Order and described in Part 1 of the Schedule to this Order shall be stopped up after 28 days from the date of confirmation of this Order, and thereupon the Definitive Map for the Borough of Stafford shall be modified by deleting from it that public right of way.
2. There shall, at the end of 28 days from the date of confirmation of this Order, be a public footpath over the land situate at Stowe-by-Chartley described in Part 2 of the Schedule and shown by a bold broken line on the map contained in this Order and thereupon the Definitive Map for the Borough of Stafford shall be modified by adding that path to it.
3. The Definitive Statement for the Borough of Stafford shall be modified as described in Part 4 of the Schedule to this Order.
4. The rights conferred on the public under this Order shall be subject to the Limitations and Conditions set out in Part 3 of the Schedule.

1308

2051

SCHEDULE

PART 1

DESCRIPTION OF SITE OF EXISTING PATH OR WAY

That length of Public Footpath No. 21 Stowe-by-Chartley Parish running from its junction with Lea Road at point A on the Order plan (401487 326324) in a generally northerly direction for approximately 20 metres to point B on the Order plan (401489 326343) before heading in a generally easterly direction for approximately 20 metres to point C on the Order plan (401508 326346) then heading in a generally north westerly direction for approximately 125 metres to point D on the Order plan (401462 326460).

PART 2

DESCRIPTION OF SITE OF NEW PATH OR WAY

A new length of Public Footpath No. 21(a) Stowe-by-Chartley Parish running from its junction with Lea Road opposite Public Footpath No 12 Hixon at point E on the Order (401625 326291) and heading in a generally north-westerly direction for approximately 211 metres to its junction with Public Footpath No 19 Stowe-by-Chartley Parish at point F on the Order plan (401516 326473).

The new route will have a prescribed width of 1.8 metres between points E (401625 326291) and F (401516 326473) on the Order plan.

PART 3

LIMITATIONS AND CONDITIONS

A medium mobility Kissing Gate in accordance with BS5709:2006 will be installed at point E on the Order plan (401625 326291).

2051

PART 4

MODIFICATION OF DEFINITIVE STATEMENT

VARIATION OF PARTICULARS OF PATH

Path No.	Type of Path	Path commences at	Path finishes at	Documents creating or modifying the right of way and other relevant information
21	F.P.	Junction with Public Footpath No 19 Stowe-by-Chartley Parish approximately 137 metres north of Lea Road	County road, S.W. of Normanswood Farm	Staffordshire County Council (Public Footpath No. 21 Parish of Stowe-by-Chartley) Public Footpath Diversion Order 1981 Staffordshire County Council (Public Footpath No 21 (Part) Stowe-by-Chartley Parish) Public Path Diversion and Definitive Map and Statement Modification Order 2014
21(a)	F.P.	Junction with Public Footpath No 19 Stowe-by-Chartley Parish approximately 130 metres north of Knowle Cottage	Junction with Lea Road opposite Public Footpath No 12 Hixon Parish	Staffordshire County Council (Public Footpath No 21 (part) Stowe-by-Chartley Parish) Public Path Diversion and Definitive Map and Statement Modification Order 2014

Given under the Common Seal of the Staffordshire county Council on
.....19 August..... Two thousand and fourteen

**THE COMMON SEAL OF
STAFFORDSHIRE COUNTY COUNCIL**
was hereunto affixed in the presence of:

JAL

.....
Authorised Signatory



Confirmed as an unopposed Order on
the 15th day of December..... Two thousand
and Fifteen

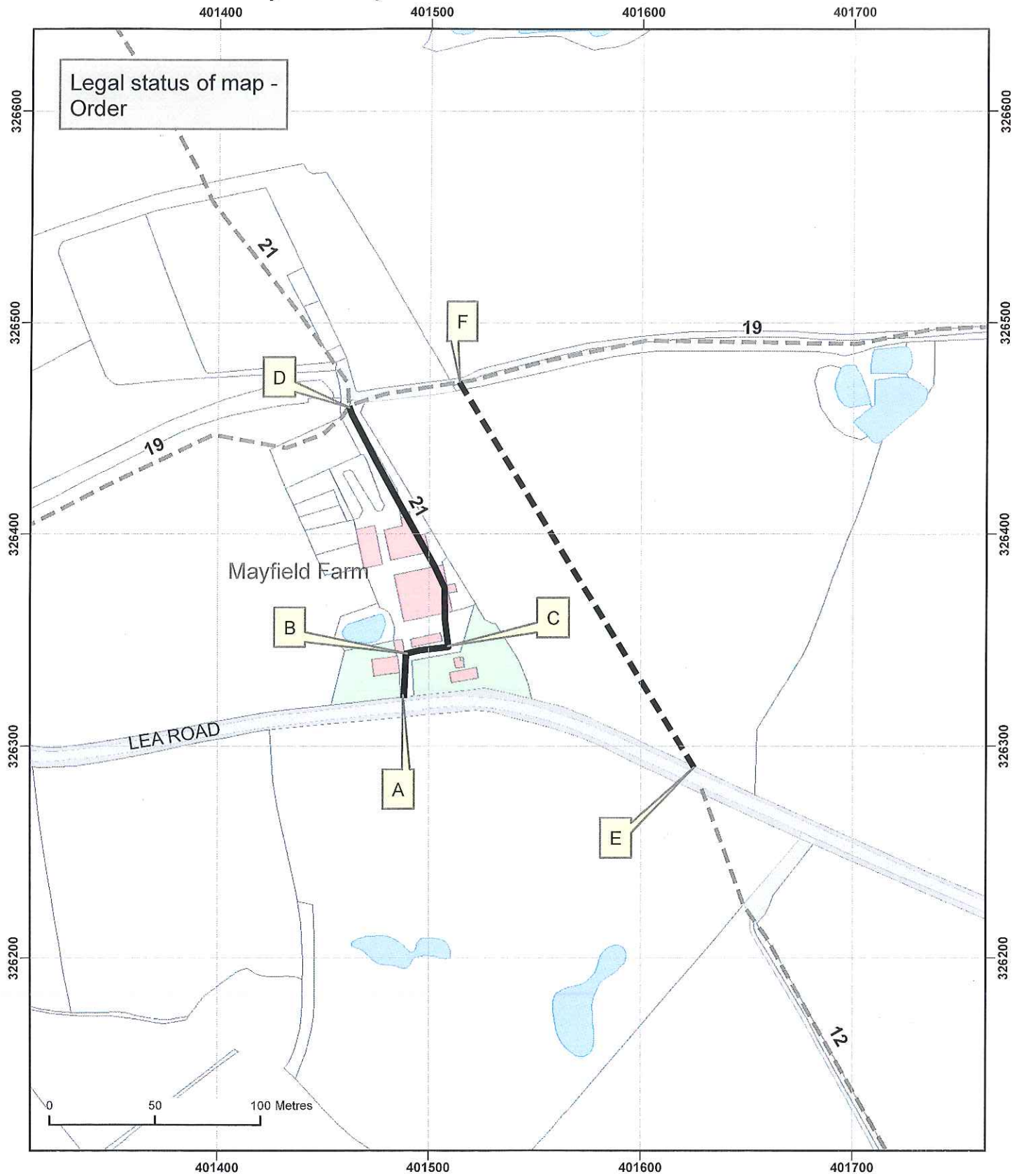
D. Egan
.....
Authorised Signatory



151990





15/12/14

Highway Act 1980, Section 119 &
 Wildlife and Countryside Act 1981, Section 53A(2).
 Diversion of Public Footpath No. 21,
 Stowe-by-Chartley Parish.



Map created at the scale of 1:2500
 (facsimiles may vary)

© Crown Copyright and database rights 2014.
 Ordnance Survey 100019422. You are not
 permitted to copy, sub-license, distribute or
 sell any of this data to third parties in any form.
 Use of this data is subject to the terms and conditions
 shown at www.staffordshire.gov.uk/maps.
 Produced by Staffordshire County Council, 18/08/2014.

-  Path to be Extinguished (A - B - C - D).
-  Path to be created (E - F).
-  Rights of Way Unaffected
-  Footpath