

PUBLIC PATH DIVERSION ORDER

HIGHWAYS ACT 1980

STAFFORDSHIRE COUNTY COUNCIL

**(PUBLIC BRIDLEWAY NO. 1 (PART) AND NO. 2 (PART) BRADLEY PARISH)
PUBLIC PATH DIVERSION ORDER 2017**

This Order is made by Staffordshire County Council ("the authority") under Section 119 of the Highways Act 1980 ("the 1980 Act") because it appears to the authority that, in the interests of the owner of the land crossed by the bridleways described in paragraph 1 of this Order, it is expedient that the lines of the paths should be diverted.

The landowner has agreed to defray any expenses which are incurred in bringing the new site of the paths into a fit condition for use by the public.

Stafford Borough Council have been consulted as to the making of the Order as required by Section 120(2) of the 1980 Act.

BY THIS ORDER

1. The public rights of way over the land situate at Bradley and shown by bold black lines on the map contained in this Order and described in Part 1 of the Schedule to this Order shall be stopped up after 28 days from the date of confirmation of this Order, and thereupon the Definitive Map for the Borough of Stafford shall be modified by deleting from it those public rights of way.
2. There shall, at the end of 28 days from the date of confirmation of this Order, be new public rights of way over the land situate at Bradley and described in Part 2 of the Schedule and shown by bold broken lines on the map contained in this Order and thereupon the Definitive Map for the Borough of Stafford shall be modified by adding those paths to it.
3. The rights conferred on the public under this Order shall be subject to the Limitations and Conditions set out in Part 3 of the Schedule.

SCHEDULE

PART 1

DESCRIPTION OF SITE OF EXISTING PATH OR WAY

That length of Public Bridleway No. 1 Bradley Parish which runs from its junction with Public Bridleway No 2 Bradley Parish at point C on the Order plan (388332 321313) in a generally westerly direction for approximately 118 metres to point D on the Order plan (388213 321311).

That length of Public Bridleway No. 2 Bradley Parish which runs from the farm track at point A on the Order plan (388322 321153) in a generally northerly direction for approximately 30 metres to point G on the Order plan (388329 321183) then continuing in a generally northerly direction for approximately 37 metres to its junction with Public Bridleway No. 0.1236(a) Bradley Parish at point B on the Order plan (388334 321221) and continuing in a generally northerly direction for approximately 88 metres then in a generally north westerly direction for approximately 7 metres to its junction with Public Bridleway No. 1 Bradley Parish at point C on the Order plan (388332 321313).

PART 2

DESCRIPTION OF SITE OF NEW PATH OR WAY

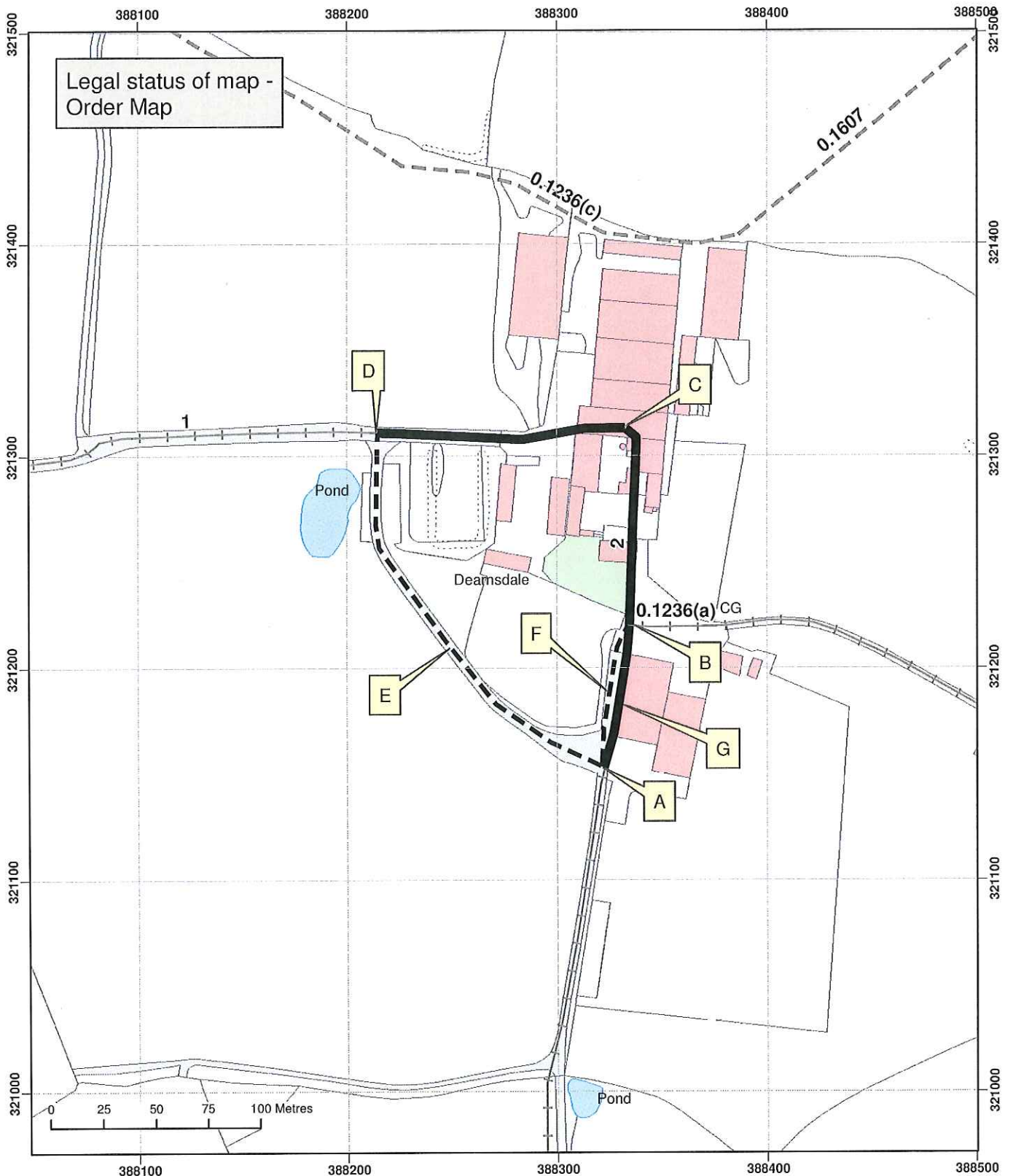
A new length of Public Bridleway No. 1 Bradley Parish which runs from the farm track at point A on the Order plan (388322 321153) in a generally north westerly direction for approximately 93 metres to point E on the Order plan (388249 321210) and continuing on in a generally north westerly then northerly direction for approximately 111 metres to its junction with Public Bridleway No. 1 Bradley Parish at point D on the Order plan (388213 321311).

A new length of Public Bridleway No. 2 Bradley Parish which runs from the farm track at point A on the Order plan (388322 321153) in a generally northerly direction along the farm driveway for approximately 35 metres to point F on the Order plan (388323 321189) then continuing along the driveway in a generally northerly direction for approximately 33 metres to its junction with Public Bridleway No. 0.1236(a) Bradley Parish at point B on the Order plan (388334 321221)






The new route of Public Bridleway No. 1 Bradley Parish shall have a prescribed width of 3.5 metres between points A-E-D.

The new route of Public Bridleway No. 2 Bradley Parish shall have a prescribed width of 3 metres between points A-F-B.

Highways Act 1980, Section 119
 Diversion of Public Bridleways
 No.1 (part) and No.2 (part) Bradley Parish.



Map created at the scale of 1:2500
 (facsimiles may vary)

-  Routes to be extinguished (A - G - B - C and C - D).
-  Routes to be created (A - F - B and A - E - D).
- Rights of Way Unaffected**
-  Footpath
-  Bridleway
-  Byway Open to All Traffic

© Crown Copyright and database rights 2017.
 Ordnance Survey 100019422. You are not permitted to copy, sub-license, distribute or sell any of this data to third parties in any form. Use of this data is subject to the terms and conditions shown at www.staffordshire.gov.uk/maps.
 Produced by Staffordshire County Council, 11/04/2017.

PART 3

LIMITATIONS AND CONDITIONS

There are no limitations or conditions.

Given under the Common Seal of the Staffordshire County Council on
..... 13th April Two thousand and seventeen

**THE COMMON SEAL OF
STAFFORDSHIRE COUNTY COUNCIL**
was hereunto affixed in the presence of:



..... *[Signature]*
Authorised Signatory

Confirmed as an unopposed Order on
the .. 6th .. day of .. July Two thousand
and .. Seventeen ..

..... *[Signature]*
Authorised Signatory

