

Sign Schedule	
	ID: 001 Qty: 1 Ref: 2702 Start of temporary diversion route
	ID: 002 Qty: 1 Ref: TFL 13.9 RAEC Road closed except cycles
	ID: 003 Qty: 1 Ref: TFL 13.9 RAEC Road closed except cycles
	ID: 004 Qty: 2 Ref: 2702 Start of temporary diversion route
	ID: 005 Qty: 2 Ref: 573 Direction to hazard right
	ID: 006 Qty: 1 Ref: 13-9 Schedule 13 : Temporary Sign
	ID: 007 Qty: 2 Ref: 573 Direction to hazard left
	ID: 008 Qty: 1 Ref: 13-9 Schedule 13 : Temporary Sign
	ID: 009 Qty: 3 Ref: 7010-FP-13-9 Nature of temporary hazard ahead - Road Ahead Closed
	ID: 010 Qty: 7 Ref: 7001 Road works ahead
	ID: 011 Qty: 4 Ref: 7010-FP-13-9 Nature of temporary hazard ahead - Road Closed

- NOTES:
- All signs, markings and safety zones will be in accordance with Traffic Signs Manual.
 - Sign locations are indicative only and exact locations will be determined on site.
 - Works Access and Egress locations to be agreed on site and any changes to the design should be reported.

Key:

Safety Zone

Road Closed

Diverstions

Pedestrian Route

Pedestrian Barrier

Portable traffic signal

Pedestrian ramp (Fixed to ground)

Temporary pedestrian crossing

Works Area

Sign

Cone Line

Marshal

TM Operative

Traffic light phase

No Parking Cones

DETAIL B

Single/Dual carriageway 40mph or less - 450mm cones, spacing 1.5m.
Single/Dual carriageway 50mph or more - 750mm cones, spacing 1.5m.
Dual carriageway national speed limit - 750mm cones, spacing 1.5m, relaxation 3m.

- Notes:
- During darkness, warning lights to BS EN 12352:2006 should be provided in accordance with Table A1.3 (Appendix 1).
 - 45° tapers have 1.5m spacing, no relaxations.
 - On motorways and NSL AP Duals with hard shoulders, 1m cones will be required for both standard and relaxation works for lead tapers and the facing wall of lane changes.

DETAIL C1

Single/Dual carriageway 40mph or less - 450mm traffic cones.
Single/Dual carriageway 50mph or more - 750mm traffic cones.

- Notes:
- During darkness, warning lights to BS EN 12352:2006 should be provided in accordance with Table A1.3 (Appendix 1).
 - For relaxation to Detail C1 see Table A1.3 (Appendix 1).

Scan QR for location
EASTINGS & NORTHINGS:
412173 , 316809

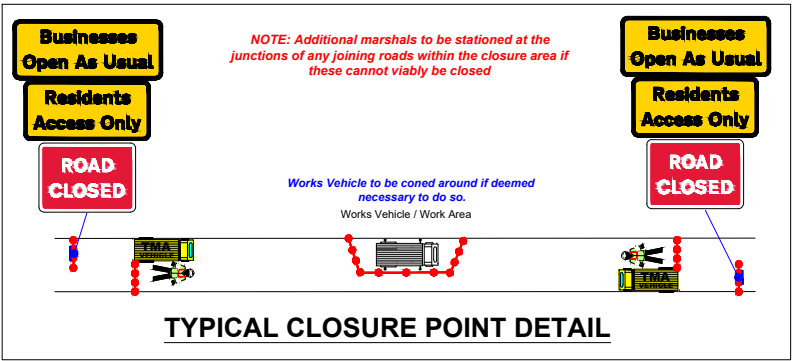


Permanent Speed Limit

SAFETY ZONE DIMENSIONS
Sideways Safety Zone : 0.5m
Longways Safety Zone: 0.5m
ALL DIMENSIONS ARE MINIMA



FOR DIVERSION SEE SHEETS 2-3



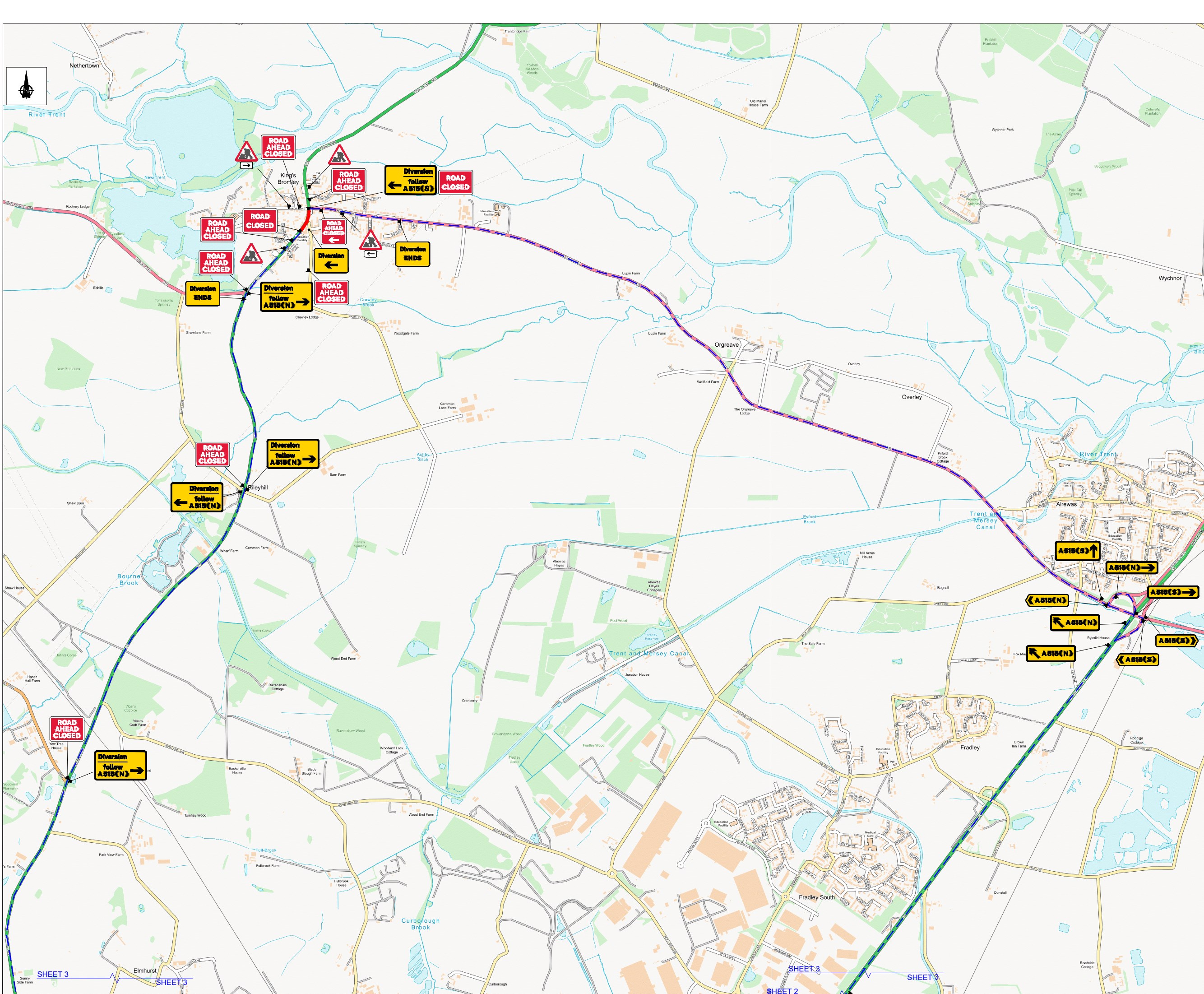
TYPICAL CLOSURE POINT DETAIL

Amey

Title A515, LICHFIELD ROAD, KINGS BROMLEY
STAFFORDSHIRE, DE13 7HE

ROAD CLOSURE
SHEET 1 OF 3

Designed	DP	08.10.25	Eng Chk.	x	x
Drawn	DP	08.10.25	Coordination	x	x
Dwg Chk.	DS	08.10.25	Approved	x	x
Scale at A3	NTS	Project	x	Status	X
Drawing No	AUX-TTM-AMEY-506-A515-LICHFIELD_RD-RC_DIV	Rev	X		



NOTES:

- All signs, markings and safety zones will be in accordance with Traffic Signs Manual.
- Sign locations are indicative only and exact locations will be determined on site.
- Works Access and Egress locations to be agreed on site and any changes to the design should be reported.

Key:

	Safety Zone		Works Area
	Road Closed		Sign
	Diversions		Cone Line
	Pedestrian Route		Marshal
	Pedestrian Barrier		TM Operative
	Portable traffic signal		Traffic light phase
	Pedestrian ramp (Fixed to ground)		No Parking Cones
	Temporary pedestrian crossing		

DETAIL B

Single/Dual carriageway 40mph or less - 450mm cones, spacing 1.5m.
Single/Dual carriageway 50mph or more - 750mm cones, spacing 1.5m.
Dual carriageway national speed limit - 750mm cones, spacing 1.5m, relaxation 3m.

Notes:
1) During darkness, warning lights to BS EN 12352:2006 should be provided in accordance with Table A1.3 (Appendix 1).
2) 45° tapers have 1.5m spacing, no relaxations.
3) On motorways and NSL AP Duals with hard shoulders, 1m cones will be required for both standard and relaxation works for lead tapers and the facing wall of lane changes.

DETAIL C1

Single/Dual carriageway 40mph or less - 450mm traffic cones.
Single/Dual carriageway 50mph or more - 750mm traffic cones.

Notes:
1) During darkness, warning lights to BS EN 12352:2006 should be provided in accordance with Table A1.3 (Appendix 1).
2) For relaxation to Detail C1 see Table A1.3 (Appendix 1).

Scan QR for location EASTINGS & NORTHINGS:

412173 , 316809

Permanent Speed Limit

SAFETY ZONE DIMENSIONS
Sideways Safety Zone : 0.5m
Longways Safety Zone: 0.5m
ALL DIMENSIONS ARE MINIMA

Diversion Length
16.8 miles

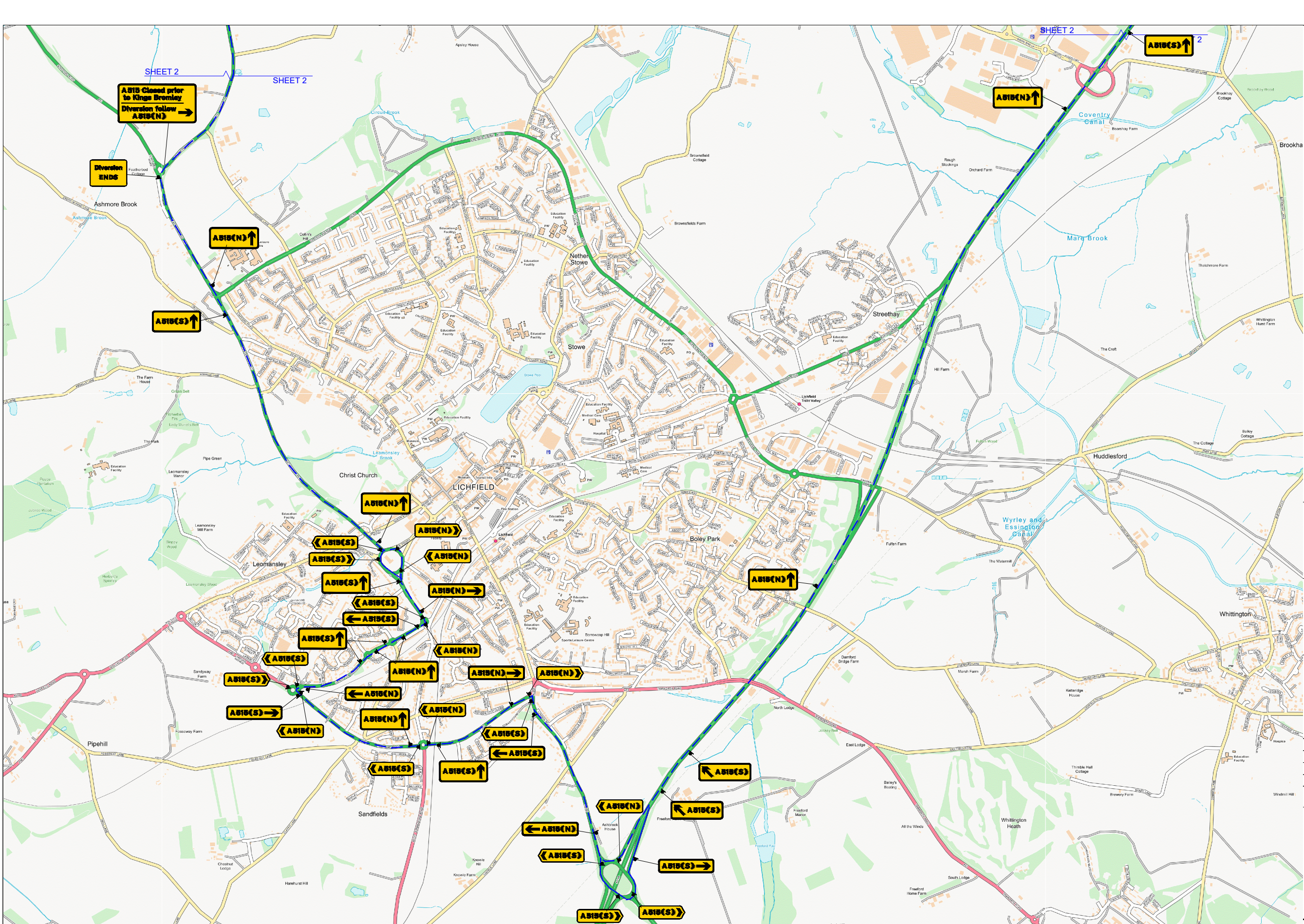
Revision	By	Checked	Approved	Date	Description

Title A515, LICHFIELD ROAD, KINGS BROMLEY STAFFORDSHIRE, DE13 7HE

ROAD CLOSURE SHEET 2 OF 3

Designed	DP	08.10.25	Eng Chk.	x	x
Drawn	DP	08.10.25	Coordination	x	x
Dwg Chk.	DS	08.10.25	Approved	x	x
Scale at A3	NTS	Project	x	Status	X
Drawing No	AUX-TTM-AMEY-506-A515-LICHFIELD_RD-RC_DIV				Rev
					X

A3



- NOTES:
1. All signs, markings and safety zones will be in accordance with Traffic Signs Manual.
 2. Sign locations are indicative only and exact locations will be determined on site.
 3. Works Access and Egress locations to be agreed on site and any changes to the design should be reported.

Key:

	Safety Zone		Works Area
	Road Closed		Sign
	Diversions		Cone Line
	Pedestrian Route		Marshal
	Pedestrian Barrier		TM Operative
	Portable traffic signal		Traffic light phase
	Pedestrian ramp (Fixed to ground)		No Parking Cones
	Temporary pedestrian crossing		

DETAIL B

Single/Dual carriageway 40mph or less - 450mm cones, spacing 1.5m.
Single/Dual carriageway 50mph or more - 750mm cones, spacing 1.5m.
Dual carriageway national speed limit - 750mm cones, spacing 1.5m, relaxation 3m.

Notes:

- 1) During darkness, warning lights to BS EN 12352:2006 should be provided in accordance with Table A1.3 (Appendix 1).
- 2) 45° tapers have 1.5m spacing, no relaxations.
- 3) On motorways and NSL AP Duals with hard shoulders, 1m cones will be required for both standard and relaxation works for lead tapers and the facing wall of lane changes.

DETAIL C1

Single/Dual carriageway 40mph or less - 450mm traffic cones.
Single/Dual carriageway 50mph or more - 750mm traffic cones.

Notes:

- 1) During darkness, warning lights to BS EN 12352:2006 should be provided in accordance with Table A1.3 (Appendix 1).
- 2) For relaxation to Detail C1 see Table A1.3 (Appendix 1).

Scan QR for location EASTINGS & NORTHINGS:

412173 , 316809

Permanent Speed Limit

SAFETY ZONE DIMENSIONS
Sideways Safety Zone : 0.5m
Longways Safety Zone: 0.5m
ALL DIMENSIONS ARE MINIMA

Diversion Length
16.8 miles

Revision	By	Checked	Approved	Date	Description



Title A515, LICHFIELD ROAD, KINGS BROMLEY STAFFORDSHIRE, DE13 7HE					
ROAD CLOSURE SHEET 3 OF 3					
Designed	DP	08.10.25	Eng Chk.	x	x
Drawn	DP	08.10.25	Coordination	x	x
Dwg Chk.	DS	08.10.25	Approved	x	x
Scale at A3	NTS	Project	x		Status
					x
Drawing No	AUX-TTM-AMEY-506-A515-LICHFIELD_RD-RC_DIV				Rev
					X
A3					

	ID: 001 Qty: 1 Ref: 573 Direction to hazard right		ID: 005 Qty: 1 Ref: 573 Direction to hazard left		ID: 009 Qty: 6 Ref: 13.9 Schedule 13-9 : Temporary Information		ID: 013 Qty: 7 Ref: 13.9 Schedule 13-9 : Temporary Information		ID: 017 Qty: 1 Ref: 13.9 Schedule 13-9 : Temporary Information		ID: 021 Qty: 2 Ref: 2702 End of temporary diversion route
	ID: 002 Qty: 1 Ref: 13.9 Schedule 13-9 : Temporary Information		ID: 006 Qty: 4 Ref: 7001 Road works ahead		ID: 010 Qty: 2 Ref: 13.9 Schedule 13-9 : Temporary Information		ID: 014 Qty: 5 Ref: 13.9 Schedule 13-9 : Temporary Information		ID: 018 Qty: 4 Ref: 13.9 Schedule 13-9 : Temporary Information		
	ID: 003 Qty: 1 Ref: 13.9 Schedule 13-9 : Temporary Information		ID: 007 Qty: 2 Ref: 13.9 Schedule 13-9 : Temporary Information		ID: 011 Qty: 7 Ref: 13.9 Schedule 13-9 : Temporary Information		ID: 015 Qty: 2 Ref: 13.9 Schedule 13-9 : Temporary Information		ID: 019 Qty: 7 Ref: 7010-FP-13-9 Nature of temporary hazard ahead - Road Ahead Closed		
	ID: 004 Qty: 2 Ref: 7010-FP-13-9 Nature of temporary hazard ahead - Road Closed		ID: 008 Qty: 5 Ref: 13.9 Schedule 13-9 : Temporary Information		ID: 012 Qty: 5 Ref: 13.9 Schedule 13-9 : Temporary Information		ID: 016 Qty: 7 Ref: 13.9 Schedule 13-9 : Temporary Information		ID: 020 Qty: 1 Ref: 2702 Start of temporary diversion route		