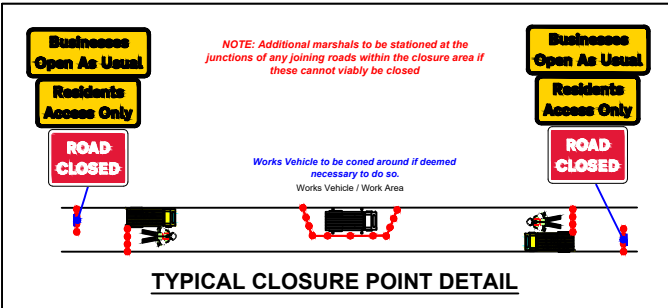


Sign Schedule	
	ID: 001 Qty: 2 Ref: 2702 Start of temporary diversion route
	ID: 002 Qty: 5 Ref: 13.9 Pedestrian Crossing Wait Here
	ID: 003 Qty: 5 Ref: 7001 Road works ahead
	ID: 004 Qty: 2 Ref: 2703 Direction of temporary diversion route from junction ahead
	ID: 005 Qty: 6 Ref: 7010-FP-13-9 Nature of temporary hazard ahead - Road Closed
	ID: 006 Qty: 1 Ref: 13-9 Schedule 13 : Temporary Sign
	ID: 007 Qty: 2 Ref: 2702 End of temporary diversion route
	ID: 008 Qty: 4 Ref: 2702 Start of temporary diversion route
	ID: 009 Qty: 10 Ref: 7010-FP-13-9 Nature of temporary hazard ahead - Road Ahead Closed
	ID: 010 Qty: 4 Ref: 2703 Direction of temporary diversion route from junction ahead
	ID: 011 Qty: 8 Ref: 2704 Direction of temporary diversion route
	ID: 012 Qty: 7 Ref: 2704 Direction of temporary diversion route
	ID: 013 Qty: 5 Ref: 2703 Direction of temporary diversion route from junction ahead



NOTE

Diversion to be driven prior to the road closure being installed.

Plans for any road closure should be discussed by the designer with the police and any relevant Highways Authorities, if traffic is being diverted on to their network.

NOTES:

- All signs, markings and safety zones will be in accordance with Traffic Signs Manual.
- Sign locations are indicative only and exact locations will be determined on site.
- Works Access and Egress locations to be agreed on site and any changes to the design should be reported.

Key:

	Safety Zone		Works Area
	Road Closed		Sign
	Diversions		Cone Line
	Pedestrian Route		Marshal
	Pedestrian Barrier		TM Operative
	Portable traffic signal		Traffic light phase
	Pedestrian ramp (Fixed to ground)		No Parking Cones
	Temporary pedestrian crossing		

DETAIL B

Single/Dual carriageway 40mph or less - 450mm cones, spacing 1.5m.
Single/Dual carriageway 50mph or more - 750mm cones, spacing 1.5m.
Dual carriageway national speed limit - 750mm cones, spacing 1.5m, relaxation 3m.

Notes:

- During darkness, warning lights to BS EN 12352:2006 should be provided in accordance with Table A1.3 (Appendix 1).
- 45° tapers have 1.5m spacing, no relaxations.
- On motorways and NLS AP Duals with hard shoulders, 1m cones will be required for both standard and relaxation works for lead tapers and the facing wall of lane changes.

DETAIL C1

Single/Dual carriageway 40mph or less - 450mm traffic cones.
Single/Dual carriageway 50mph or more - 750mm traffic cones.

Notes:

- During darkness, warning lights to BS EN 12352:2006 should be provided in accordance with Table A1.3 (Appendix 1).
- For relaxation to Detail C1 see Table A1.3 (Appendix 1).

Scan QR for location EASTINGS & NORTHINGS:

424651 , 322755

Permanent Speed Limit

SAFETY ZONE DIMENSIONS
Sideways Safety Zone : 0.5m
Longways Safety Zone: 0.5m
ALL DIMENSIONS ARE MINIMA

Diversion Length

2.2 miles

Revision	By	Checked	Approved	Date	Description

Title B5018 UNION STREET
BURTON UPON TRENT, EAST STAFFORDSHIRE
DE14 3QW
ROAD CLOSURE AND DIVERSION
SHEET 1 OF 1

Designed	DP	30.06.25	Eng Chk.	x	x
Drawn	DP	30.06.25	Coordination	x	x
Dwg Chk.	DC	30.06.25	Approved	x	x
Scale at A3	NTS	Project	x	Status	x
Drawing No	AUX-TTM-AMEY-224-UNION-ST-LICHFIELD-ST-ROAD_CLOSURE	Rev	A		

A3