

Scheme Update – July 2020

Introduction

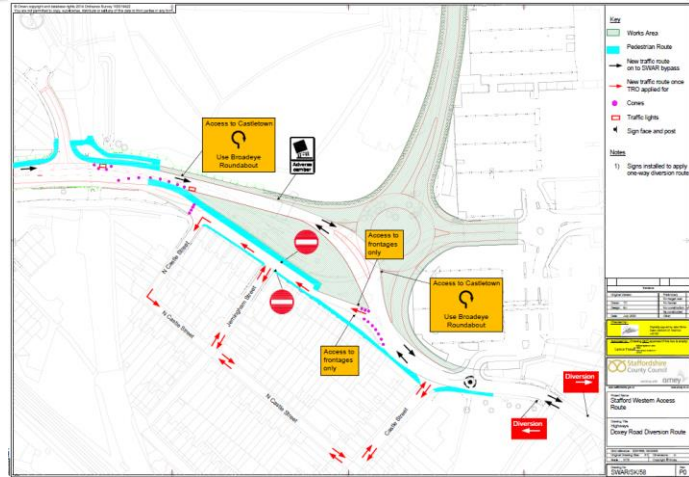
Since our last update we have been making great progress, the surfacing works on the new part of Doxey Road are progressing well with a view to being partially open in August, the bored and driven piling works are all now complete, we would like to thank you for your patience and understanding during this phase of works.

What are we doing now?

We continue to work on building the retaining wall in Madford Retail Park, these works will continue throughout August so we can commence with the road widening at the entrance to Madford Retail Park in September.

Now the bored piling at Madford is complete concrete works have commenced. The northern bridge support base has been installed and we are progressing with casting raft slabs.

We are continuing with the drainage works and surfacing at Martin Drive will commence in August. Hoarding has been erected to start works on the retaining wall on the south west side of the railway bridge

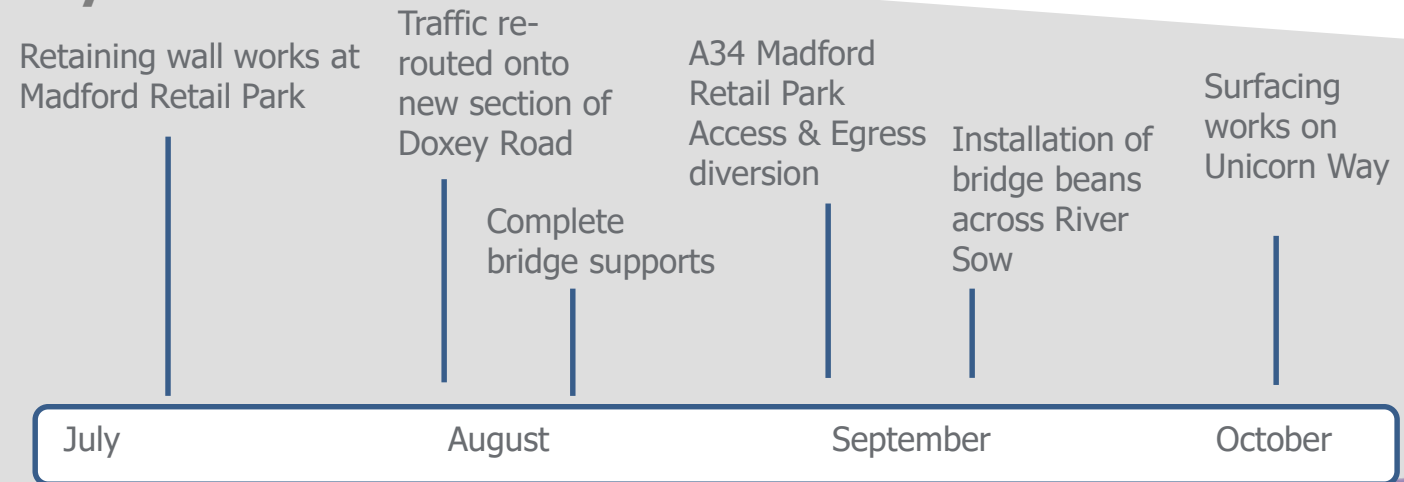


Kerbing and footpath works are scheduled throughout August in the Timberfields area and reshaping of the existing embankments along the north side of Castletown.

Week commencing the 10th August all traffic will be rerouted onto the new section of Doxey Road, the existing Doxey Road will become access only to property frontages for Castletown residents. Pedestrian access will remain as is it currently.

Traffic Management will reduce to 2-way traffic lights on Doxey Road to manage the traffic as it moves on the new section of road.

Key Milestones



*Dates in accordance with current programme and could be subject to change