

Introducing Perspective Lite

Easy access to the information the county council uses to support school improvement

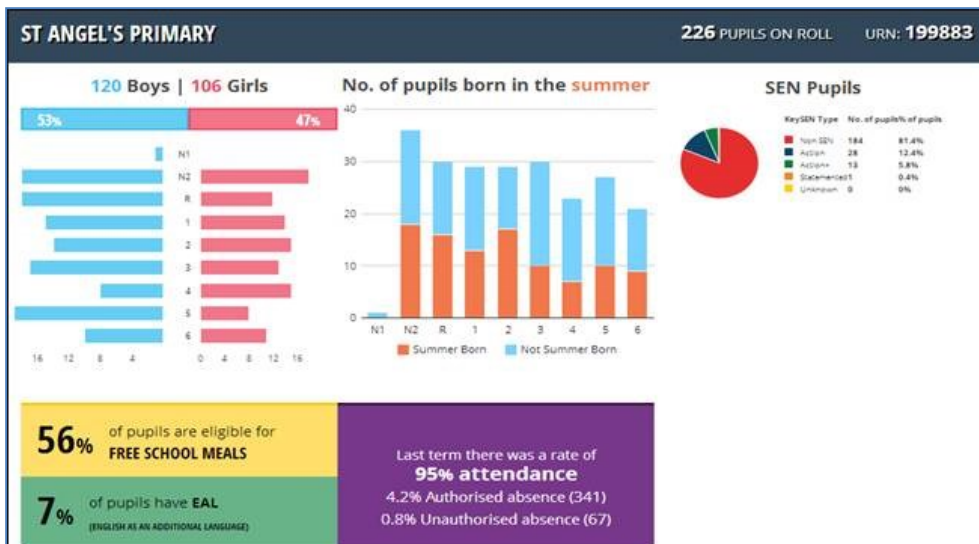
At the summer conference in June, we showcased a new online system that supports school improvement activity called Perspective Lite. Following your positive feedback, we're pleased to announce that over the coming weeks we'll be launching this system so that you can have free and easy access to the data and information the county council uses to monitor, challenge and support school improvement. You will be able to access county council:

- quality assurance visit reports,
- performance data reports and
- live headline Key Stage data

The system is called Perspective Lite, is developed by Angel Solutions in partnership with the National Centre for Education Research (NCER) and is completely secure.

Upload your school data to create attractive performance infographics

In addition to accessing county council data on school performance, using Perspective Lite you can also upload your School Census data to generate simple and attractive infographics.



Other useful tools that you can access for free in Perspective Lite include:

- View the very latest 100 Ofsted inspections on the hotspot map
- View national education news from a variety of sources online, all in one place
- Create a five minute lesson plan

There is also the option to subscribe to the full version of Perspective, by contacting Angel Solutions. This will allow you to access additional content such as: performance

management, planning, self-evaluation, surveys, document storage, lesson observations / teaching standards.

What do I need to do?

Over the coming weeks, please look out for an email that will contain your school's username and password.

When you've got your log in details, go to <https://perspective.angelsolutions.co.uk> to access this fantastic new resource.

Once you've signed up, you'll receive a weekly email alert (on Wednesday mornings) summarising any new reports or news that have been posted in the last seven days.

For those of you that already use the full version of Perspective, please continue to login to the system as normal and you will soon begin to see reports and documents from the county council.

Help and Support

If you get stuck and need assistance, there are lots of help materials, videos and live online support within Perspective Lite.

The Angel Solutions support team can also be contact via email at perspectivesupport@angelsolutions.co.uk or by phone at 0845 129 7196.

The team at Angel Solutions may also be in contact over the first few weeks to see how you are getting on and if you have any issues.

If your query relates to the actual content of the county council report items then you should contact your County Manager for Improvement at the county council.