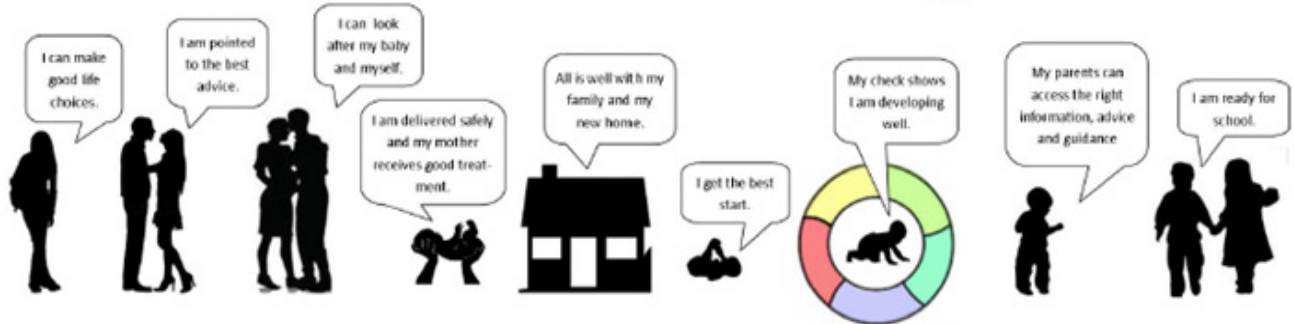


# NEWCASTLE-UNDER-LYME DISTRICT PROFILE

TEENAGER    CONCEPTION    PREGNANCY    BIRTH    HOME    0-6 WEEKS    1 YEAR    2 YEARS    TODDLER (3-4 YEARS)    FIRST DAY OF SCHOOL

★ PHSE   ★ CONTRACEPTIVE ADVICE   ★ HEALTH PREGNANCY CHECK   ★ 14 DAY NEW BIRTH VISIT   ★ 6 WEEK CHECK   ★ IMMUNISATION   ★ 12 MONTH AGES & STAGES QUESTIONNAIRE / THINK 2   ★ NURSERY EDUCATION FUND (3-4 ENTITLEMENT)   ★ EYFS KS1



DECEMBER 2016

## CONTENTS PAGE

<b>Introduction</b> .....	<b>3</b>
<b>Summary</b> .....	<b>4</b>
<b>Population</b>	
Ward Boundaries .....	6
Under 5 Population.....	7
Household Composition .....	8
Worklessness.....	9
Children’s Social Care Groups.....	10
Building Resilient Families and Communities (BRFC) .....	11
Early Years Reach.....	13
Children Centre Attendance Map.....	15
<b>Conception</b>	
Under 18 Conception (District map).....	17
<b>Birth</b>	
General Fertility Rates .....	18
Low Birthweight .....	19
<b>0-6 Weeks</b>	
Breastfeeding Prevalence.....	20
<b>1 Year and 2 Year</b>	
Think2 .....	21
Sufficiency.....	22
<b>Toddler</b>	
Sufficiency.....	23
<b>First Day at School</b>	
Childhood Obesity.....	24
Early Years Foundation Stage Profile .....	26

## Contact for Further Information

Report compiled by Operational Intelligence & Performance Team  
 Claire Makinson - Performance Manager, 01785 277067  
 Farhana Patel - Performance Officer, 01785 277798

## INTRODUCTION

The purpose of the Early Years District Profile is to bring together a wide range of indicators for each district. It provides the commissioners with a robust evidence base across a range of health and wellbeing issues to help identify priority areas to target and place services in appropriate areas.

The report pulls together information from various sources to present a picture of the health and wellbeing of children aged 0-4, following through the Best Start Pathway.

The data is presented and displayed at Ward Level with comparisons made with Staffordshire and England. Information used in the report is the latest available at the time of writing.

Health and social needs are complex and it is unlikely that there will be a single factor which is responsible for the particular situation in each local area. Therefore, it is important that no single item of information is treated in isolation. Instead the various pieces of data and evidence should be used together to give a better picture of the needs of children and young people in the local community.

We aim to produce this annually with the next one being due November 2016 to support the Districts with their Local Authority annual conversations.

## SUMMARY

Newcastle-under-Lyme district comprises 24 wards, with 17 Lower Super Output areas of 0-30% deprivation spread across 13 wards. The population of children aged 0-4 has stayed relatively stable since 2013 at 5.1% of the total district population, with a slight decrease of 0.1% in 2014. Although there have been marginal changes across wards the overall district rate has stayed the same with the number of children increasing from 6,396 to 6,481 between 2013 and 2015.

For families with dependents, married couples are the largest group in the district accounting for 14.2% of households; the proportion of households that are lone parents varies across the wards from 3% in Loggerheads & Whitmore to 11.7% in Holditch, giving an average of 6.2% of all households being lone parents with children under the age of 5 in Newcastle-under-Lyme.

The number of children living in out of work benefit claimant households in 2015 is at a lower level than in previous years. In comparison to the levels in 2013 the number of children in out of work benefit claimant households has reduced by 6%, equivalent to 215 children. The highest proportions of children under the age of 5 living in out of work claimant households are in Knutton & Silverdale and Holditch.

All wards in Newcastle have Children in Need, although the numbers in some wards are so small that the numbers have to be suppressed; the largest numbers of Children in Need are in Chesterton and Thistleberry wards with 25 and 23 children respectively. Across Newcastle-under-Lyme there are 53 children who are subject of a Child Protection plan, with the largest proportions being in Holditch followed by Thistleberry. There are 6 wards where Looked After Children but due to the low numbers the data has had to be suppressed.

The Early Years Reach across Newcastle-under-Lyme has shown an improvement of 24 percentage points between 2014/15 and 2015/16 equating to an additional 1,526 children aged 0-4. All wards have shown an improvement in the Reach, most noticeably in both Clayton and Silverdale & Parkside where the Reach has increased by 42 percentage points. Of the 12 wards with areas of 0-30% deprivation, 11 saw an increase in the Reach and again Silverdale & Parkside had the biggest increase of 35.9 percentage points. This gives an average 0-30% Reach figure of 75.4% for Newcastle-under-Lyme, a 25.8 percentage point increase from 2014/15.

## SUMMARY CONT'D

Attendance at Children Centre activities in Newcastle-under-Lyme venues shows that the majority of attendees are from the local areas surrounding the centres and community venues. The number of attendees travelling from outside of the district are few, with the exception of Stoke on Trent from where a large number of families are travelling.

The general fertility rates across the of Newcastle-under-Lyme are statistically lower than England at 52.3 babies born per 1,000 women aged 15-44 compared to 63.2 per 1,000 for England and 57.8 per 1,000 for Staffordshire. The highest general fertility rate is in Knutton & Silverdale with 75.9 per 1,000 which is statistically higher than England, whereas Keele has the lowest rate among the 6 wards with rates statistically lower than the England average.

7.6% of babies born in Newcastle-under-Lyme are born with a low birthweight, which is statistically similar to both the Staffordshire and England average of 7.2% and 7.3% respectively. This represents a marginal decrease in the rate from 2011/2013, with the proportion of babies born with a low birthweight ranging from 3.5% in Loggerheads & Whitmore to 16% in Keele.

Data as at Summer 2016 shows the take up of Think2 childcare places is 76% in Newcastle-under-Lyme. In terms of sufficiency for Think2 places, there is a vacancy rate of 32%, equivalent to 157 vacancies; whereas the vacancy rate for all 2 year olds is 19%.

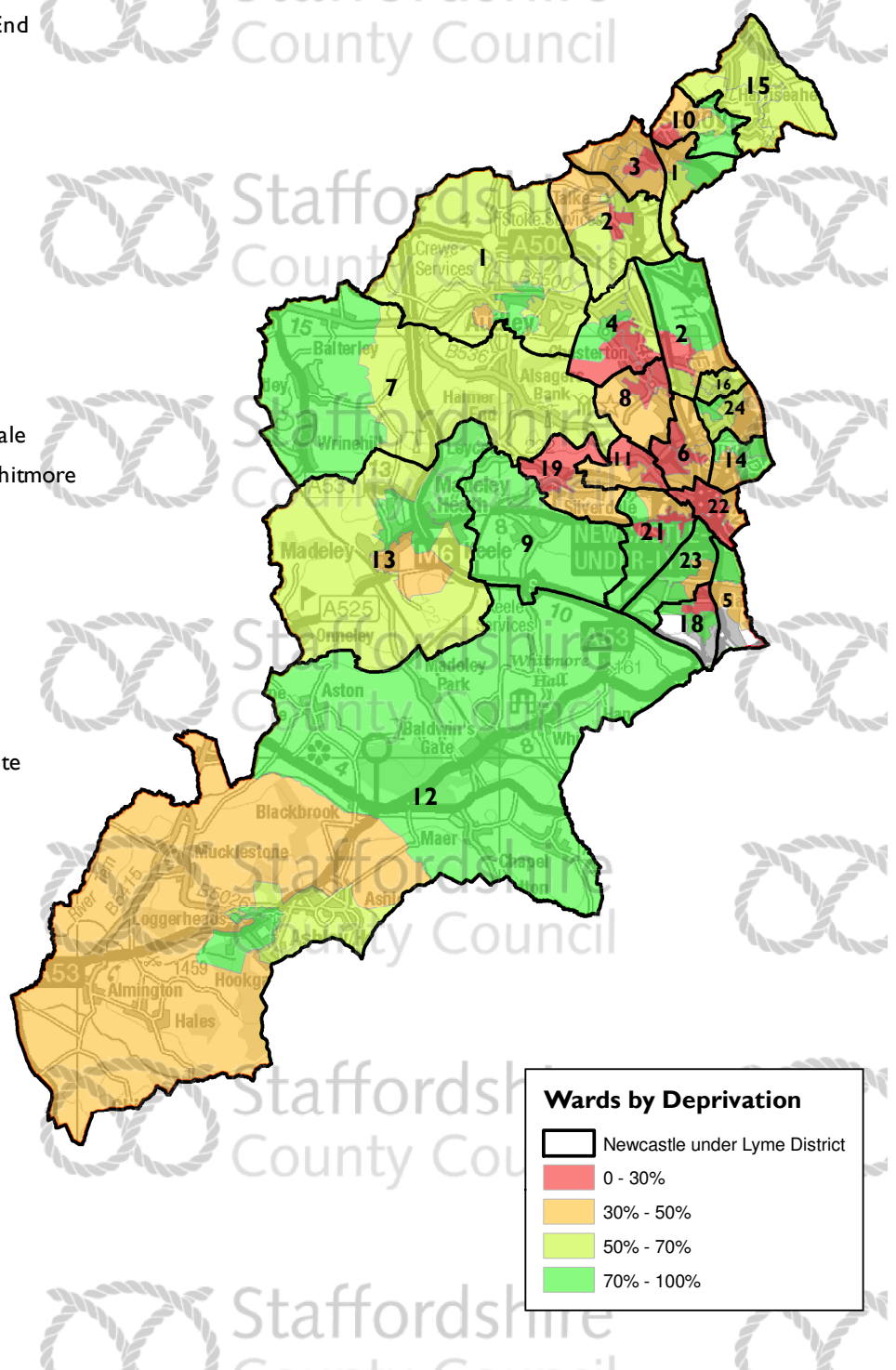
Staffordshire has a marginally higher rate than England for children who are in reception class with excess weight; the rate for Newcastle-under-Lyme is statistically similar to England with 22.3%. All wards in Newcastle-under-Lyme have a similar rate with the exception of two; the highest is in Kidsgrove with 26.1% and May Bank with the lowest proportion of children with excess weight at 14.9%. Children of the same age group who are classed as obese again is similar to England across the majority of wards with the exception of Halmerend where the rate of obesity is significantly higher than England at 17.5%; this represents a 4.5 percentage point increase on 2010-2013.

The proportion of children in Newcastle-under-Lyme with a Good Level of Development at the Early Years Foundation Stage is slightly higher than both the Staffordshire and England average of 73.8% and 69% respectively. The Good Level of Development rates vary across the wards from 59.7% in Knutton & Silverdale and 89.7% in Porthill. Overall girls are performing significantly better than boys and there no wards in Newcastle-under-Lyme where the boys have achieved a better Good Level of Development result, although Madeley has the lowest gender gap of less than one percentage point between boys and girls.

### WARD BOUNDARIES

#### Ward Boundaries

- 1 Audley and Bignall End
- 2 Bradwell
- 3 Butt Lane
- 4 Chesterton
- 5 Clayton
- 6 Cross Heath
- 7 Halmerend
- 8 Holditch
- 9 Keele
- 10 Kidsgrove
- 11 Knutton and Silverdale
- 12 Loggerheads and Whitmore
- 13 Madeley
- 14 May Bank
- 15 Newchapel
- 16 Porthill
- 17 Ravenscliffe
- 18 Seabridge
- 19 Silverdale and Parksit
- 20 Talke
- 21 Thistleberry
- 22 Town
- 23 Westlands
- 24 Wolstanton



This product contains mapping data licensed from Ordnance Survey with the permission of the Controller of Her Majesty's Stationary Office©

Crown Copyright and/or database right 2015. All rights reserved.  
Licence Number 1 000 19422

### POPULATION

#### Proportion of children aged 0-4 , 2013 - 2015

Ward	2013			2014			2015		
	Total Population	Total under 5	Percentage under 5	Total Population	Total under 5	Percentage under 5	Total Population	Total under 5	Percentage under 5
Audley and Bignall End	5,877	306	5.2%	5,912	301	5.1%	5,985	295	4.9%
Bradwell	6,354	344	5.4%	6,360	319	5.0%	6,340	326	5.1%
Butt Lane	5,646	316	5.6%	5,712	319	5.6%	5,726	337	5.9%
Chesterton	7,301	491	6.7%	7,305	488	6.7%	7,343	479	6.5%
Clayton	4,358	197	4.5%	4,331	200	4.6%	4,318	217	5.0%
Cross Heath	5,879	304	5.2%	6,103	355	5.8%	6,388	382	6.0%
Halmerend	3,832	170	4.4%	3,844	177	4.6%	3,853	195	5.1%
Holditch	4,888	380	7.8%	4,911	366	7.5%	4,978	373	7.5%
Keele	4,702	39	0.8%	4,718	41	0.9%	5,062	45	0.9%
Kidsgrove	6,827	408	6.0%	6,751	381	5.6%	6,705	382	5.7%
Knutton and Silverdale	4,384	335	7.6%	4,405	346	7.9%	4,495	356	7.9%
Loggerheads and Whitmore	6,880	225	3.3%	6,930	205	3.0%	6,848	218	3.2%
Madeley	4,295	216	5.0%	4,329	228	5.3%	4,260	221	5.2%
May Bank	6,268	293	4.7%	6,227	302	4.8%	6,214	327	5.3%
Newchapel	3,366	157	4.7%	3,388	163	4.8%	3,349	149	4.4%
Porthill	4,149	230	5.5%	4,186	228	5.4%	4,216	201	4.8%
Ravenscliffe	3,949	172	4.4%	3,924	141	3.6%	3,958	145	3.7%
Seabridge	5,520	245	4.4%	5,573	257	4.6%	5,522	280	5.1%
Silverdale and Parksite	3,974	291	7.3%	4,210	281	6.7%	4,302	277	6.4%
Talke	3,807	153	4.0%	3,813	163	4.3%	3,811	160	4.2%
Thistleberry	6,288	316	5.0%	6,399	314	4.9%	6,410	345	5.4%
Town	5,136	220	4.3%	5,123	183	3.6%	5,188	189	3.6%
Westlands	5,662	203	3.6%	5,673	227	4.0%	5,708	224	3.9%
Wolstanton	5,897	385	6.5%	5,925	374	6.3%	6,066	358	5.9%
<b>Newcastle-under-Lyme</b>	<b>125,239</b>	<b>6,396</b>	<b>5.1%</b>	<b>126,052</b>	<b>6,359</b>	<b>5.0%</b>	<b>127,045</b>	<b>6,481</b>	<b>5.1%</b>
<b>Staffordshire</b>	<b>857,007</b>	<b>46,099</b>	<b>5.4%</b>	<b>860,165</b>	<b>45,619</b>	<b>5.3%</b>	<b>862,562</b>	<b>45,344</b>	<b>5.3%</b>
<b>England</b>	<b>56,948,229</b>	<b>3,592,907</b>	<b>6.3%</b>	<b>54,316,618</b>	<b>3,430,957</b>	<b>6.3%</b>	<b>54,779,872</b>	<b>3,425,796</b>	<b>6.3%</b>

### HOUSEHOLD COMPOSITION

#### Household Composition - Families with Dependants, 2011

Ward	Number of all Households	Married Couple		Cohabiting Couple		Lone Parent		Same-Sex Civil Partnership Couple		Other Households	
		Number of families	% of all households	Number of families	% of all households	Number of families	% of all households	Number of families	% of all households	Number of families	% of all households
Loggerheads and Whitmore	2,841	536	18.9%	70	2.5%	85	3.0%	0	0.0%	61	2.1%
Keele	409	77	18.8%	13	3.2%	14	3.4%	0	0.0%	9	2.2%
Westlands	2,414	469	19.4%	62	2.6%	103	4.3%	0	0.0%	37	1.5%
Ravenscliffe	1,815	255	14.0%	64	3.5%	78	4.3%	0	0.0%	22	1.2%
Newchapel	1,467	239	16.3%	79	5.4%	65	4.4%	0	0.0%	20	1.4%
Madeley	1,826	294	16.1%	75	4.1%	82	4.5%	0	0.0%	32	1.8%
Talke	1,735	191	11.0%	90	5.2%	83	4.8%	0	0.0%	32	1.8%
May Bank	2,829	420	14.8%	103	3.6%	139	4.9%	0	0.0%	34	1.2%
Halmerend	1,662	229	13.8%	66	4.0%	82	4.9%	0	0.0%	28	1.7%
Clayton	1,906	281	14.7%	93	4.9%	97	5.1%	1	0.1%	20	1.0%
Town	2,625	147	5.6%	75	2.9%	143	5.4%	1	0.0%	26	1.0%
Audley and Bignall End	2,567	382	14.9%	116	4.5%	140	5.5%	0	0.0%	47	1.8%
Porthill	1,881	239	12.7%	119	6.3%	104	5.5%	0	0.0%	20	1.1%
Bradwell	2,603	455	17.5%	137	5.3%	154	5.9%	0	0.0%	42	1.6%
Thistleberry	2,784	353	12.7%	116	4.2%	172	6.2%	1	0.0%	46	1.7%
Seabridge	2,538	371	14.6%	84	3.3%	172	6.8%	0	0.0%	22	0.9%
Wolstanton	2,647	363	13.7%	163	6.2%	181	6.8%	0	0.0%	33	1.2%
Butt Lane	2,375	308	13.0%	140	5.9%	174	7.3%	0	0.0%	41	1.7%
Silverdale and Parksit	1,617	168	10.4%	103	6.4%	123	7.6%	0	0.0%	37	2.3%
Kidsgrove	2,741	485	17.7%	166	6.1%	222	8.1%	0	0.0%	56	2.0%
Cross Heath	2,629	264	10.0%	162	6.2%	214	8.1%	0	0.0%	53	2.0%
Chesterton	2,905	500	17.2%	196	6.7%	241	8.3%	1	0.0%	82	2.8%
Knutton and Silverdale	1,860	214	11.5%	151	8.1%	174	9.4%	0	0.0%	46	2.5%
Holditch	1,898	240	12.6%	156	8.2%	223	11.7%	1	0.1%	55	2.9%
<b>Newcastle-under-Lyme</b>	<b>52,574</b>	<b>7,480</b>	<b>14.2%</b>	<b>2,599</b>	<b>4.9%</b>	<b>3,265</b>	<b>6.2%</b>	<b>5</b>	<b>0.0%</b>	<b>901</b>	<b>1.7%</b>
<b>Staffordshire</b>	<b>355,263</b>	<b>56,756</b>	<b>16.0%</b>	<b>16,242</b>	<b>4.6%</b>	<b>21,016</b>	<b>5.9%</b>	<b>30</b>	<b>0.01%</b>	<b>6,833</b>	<b>1.9%</b>
<b>England</b>	<b>22,063,368</b>	<b>3,373,005</b>	<b>15.3%</b>	<b>890,780</b>	<b>4.0%</b>	<b>1,573,255</b>	<b>7.1%</b>	<b>2,885</b>	<b>0.01%</b>	<b>584,016</b>	<b>2.6%</b>

Remainder of the population is made up of households with no children



### WORKLESSNESS

#### Under 5 population living in out-of-work benefit claimant households, 2012-2015

Ward	2012		2013		2014		2015	
	No. of Households	No. of children aged 0-4	No. of Households	No. of children aged 0-4	No. of Households	No. of children aged 0-4	No. of Households	No. of children aged 0-4
Audley and Bignall End	45	30	85	40	70	35	70	35
Bradwell	50	25	120	50	115	50	95	40
Butt Lane	10	5	135	85	160	110	150	100
Chesterton	25	10	175	110	150	85	160	95
Clayton	75	40	50	15	55	25	50	25
Cross Heath	50	30	180	100	180	105	170	100
Halmerend	75	50	35	15	30	15	25	10
Holditch	30	20	185	130	170	120	145	100
Keele	25	10	5	-	5	5	5	-
Kidsgrove	125	70	125	80	125	80	110	55
Knutton and Silverdale	140	90	160	120	150	110	130	90
Loggerheads and Whitmore	65	30	35	15	45	20	35	15
Madeley	50	20	55	30	50	30	45	20
May Bank	65	35	65	25	50	25	45	20
Newchapel	25	15	30	15	15	10	20	5
Porthill	175	105	40	30	35	20	20	10
Ravenscliffe	145	100	45	25	40	20	35	20
Seabridge	130	85	65	45	65	35	65	30
Silverdale and Parkside	70	50	115	80	105	65	100	50
Talke	135	80	60	25	65	20	55	20
Thistleberry	50	30	120	65	110	70	100	65
Town	130	60	65	45	65	50	45	30
Westlands	30	20	40	20	40	25	35	15
Wolstanton	50	40	85	40	90	55	75	40
<b>Newcastle-under-Lyme</b>	<b>1,770</b>	<b>1,050</b>	<b>2,075</b>	<b>1,205</b>	<b>1,985</b>	<b>1,185</b>	<b>1,785</b>	<b>990</b>
<b>Staffordshire</b>	<b>14,790</b>	<b>9,235</b>	<b>12,875</b>	<b>8,050</b>	<b>11,720</b>	<b>7,500</b>	<b>10,735</b>	<b>6,605</b>
<b>England</b>	<b>1,340,420</b>	<b>839,965</b>	<b>1,268,335</b>	<b>805,100</b>	<b>1,161,325</b>	<b>735,420</b>	<b>1,066,540</b>	<b>669,360</b>

### CHILDREN'S SOCIAL CARE GROUPS

#### Children's Social Care Groups 2015/2016

Ward	Children aged 0-4			Percentage children aged 0-4		
	CIN	CP	LAC	CIN	CP	LAC
Audley and Bignall End	9	s		4%	4%	
Bradwell	10			4%		
Butt Lane	19	s		8%	6%	
Chesterton	25	5		11%	9%	
Clayton	11	s		5%	6%	
Cross Heath	14	s		6%	8%	
Halmerend	s			1%		
Holditch	11	10		5%	19%	
Kidsgrove	18	s		8%	4%	
Knutton and Silverdale	10	s	s	4%	4%	20%
Loggerheads and Whitmore	7	s		3%	2%	
Madeley	6	s	s	3%	4%	20%
May Bank	7	s		3%	2%	
Newchapel	s		s	1%		20%
Porthill	s		s	1%		20%
Ravenscliffe	s			1%		
Seabridge	14	s	s	6%	6%	10%
Silverdale and Parksite	7	s		3%	4%	
Talke	11		s	5%		10%
Thistleberry	23	8		10%	15%	
Town	9	s		4%	8%	
Westlands	5	s		2%	2%	
Wolstanton	5			2%		
<b>Newcastle-under-Lyme</b>	<b>231</b>	<b>53</b>	<b>10</b>	<b>100%</b>	<b>100%</b>	<b>100%</b>

### BUILDING RESILIENT FAMILIES AND COMMUNITIES (BRFC)

#### Phase 2 Year 1 Eligible Families 2015/16

Ward	Eligible Families	Count of people	Eligible families with children aged 0-4	Count of Children aged 0-4	Percentage of families with children aged 0-4
Audley and Bignall End	11	39	2	2	18.2%
Bradwell	20	85	8	11	40.0%
Butt Lane	18	86	8	13	44.4%
Chesterton	16	60	6	6	37.5%
Clayton	8	26	3	5	37.5%
Cross Heath	18	67	10	11	55.6%
Halmerend	2	7	0	0	0.0%
Holditch	18	68	11	14	61.1%
Keele	0	0	0	0	-
Kidsgrove	7	31	2	3	28.6%
Knutton and Silverdale	0	0	0	0	-
Loggerheads and Whitmore	9	28	0	0	0.0%
Madeley	10	42	2	3	20.0%
May Bank	3	11	0	0	0.0%
Newchapel	3	12	0	0	0.0%
Porthill	1	2	0	0	0.0%
Ravenscliffe	3	8	0	0	0.0%
Seabridge	5	13	3	3	60.0%
Silverdale and Parksite	15	50	3	3	20.0%
Talke	9	34	1	3	11.1%
Thistleberry	15	52	5	8	33.3%
Town	16	53	5	6	31.3%
Westlands	3	14	1	1	33.3%
Wolstanton	6	22	3	3	50.0%
<b>Newcastle-under-Lyme</b>	<b>216</b>	<b>810</b>	<b>73</b>	<b>95</b>	<b>33.8%</b>

### BUILDING RESILIENT FAMILIES AND COMMUNITIES (BRFC)

#### Phase 2 Year 2 Eligible Families 2016/17 (Apr - Sept)

Ward	Eligible Families	Count of people	Eligible families with children aged 0-4	Count of Children aged 0-4	Percentage of families with children aged 0-4
Audley and Bignall End	9	35	1	1	11.1%
Bradwell	20	100	5	8	25.0%
Butt Lane	12	53	4	4	33.3%
Chesterton	25	90	7	11	28.0%
Clayton	4	20	1	2	25.0%
Cross Heath	14	66	3	4	21.4%
Halmerend	3	7	0	0	0.0%
Holditch	14	76	3	5	21.4%
Keele	1	2	0	0	0.0%
Kidsgrove	19	84	4	5	21.1%
Knutton and Silverdale	0	0	0	0	-
Loggerheads and Whitmore	4	18	0	0	0.0%
Madeley	6	23	1	1	16.7%
May Bank	7	17	0	0	0.0%
Newchapel	1	6	0	0	0.0%
Porthill	6	19	1	1	16.7%
Ravenscliffe	0	0	0	0	-
Seabridge	7	19	1	2	14.3%
Silverdale and Parksite	9	36	1	1	11.1%
Talke	0	0	0	0	-
Thistleberry	9	32	2	4	22.2%
Town	12	41	1	1	8.3%
Westlands	2	6	0	0	0.0%
Wolstanton	11	46	3	4	27.3%
<b>Newcastle-under-Lyme</b>	<b>195</b>	<b>796</b>	<b>38</b>	<b>54</b>	<b>19.5%</b>

### EARLY YEARS REACH

#### Early Years Reach, 2014/15 and 2015/16

Ward	2014 Population (All)	2014 Population (Age 0-4)	2014/2015		2015/2016	
			Reach Population	% Reach Population (Age 0-4)	Reach Population	% Reach Population (Age 0-4)
Audley and Bignall End	5,912	301	140	46.5%	169	56.1%
Bradwell	6,360	319	123	38.6%	236	74.0%
Butt Lane	5,712	319	141	44.2%	225	70.5%
Chesterton	7,305	488	227	46.5%	334	68.4%
Clayton	4,331	200	91	45.5%	175	87.5%
Cross Heath	6,103	355	201	56.6%	307	86.5%
Halmerend	3,844	177	78	44.1%	104	58.8%
Holditch	4,911	366	197	53.8%	297	81.1%
Keele	4,718	41	16	39.0%		
Kidsgrove	6,751	381	169	44.4%	270	70.9%
Knutton and Silverdale	4,405	346	180	52.0%	271	78.3%
Loggerheads and Whitmore	6,930	205	94	45.9%	108	52.7%
Madeley	4,329	228	94	41.2%	138	60.5%
May Bank	6,227	302	117	38.7%	218	72.2%
Newchapel	3,388	163	61	37.4%	87	53.4%
Porthill	4,186	228	96	42.1%	119	52.2%
Ravenscliffe	3,924	141	67	47.5%	91	64.5%
Seabridge	5,573	257	123	47.9%	156	60.7%
Silverdale and Parksite	4,210	281	110	39.1%	228	81.1%
Talke	3,813	163	70	42.9%	104	63.8%
Thistleberry	6,399	314	157	50.0%	260	82.8%
Town	5,123	183	70	38.3%	112	61.2%
Westlands	5,673	227	102	44.9%	146	64.3%
Wolstanton	5,925	374	137	36.6%	231	61.8%
<b>Newcastle-under-Lyme</b>	<b>126,052</b>	<b>6,359</b>	<b>2,861</b>	<b>45.0%</b>	<b>4,387</b>	<b>69.0%</b>

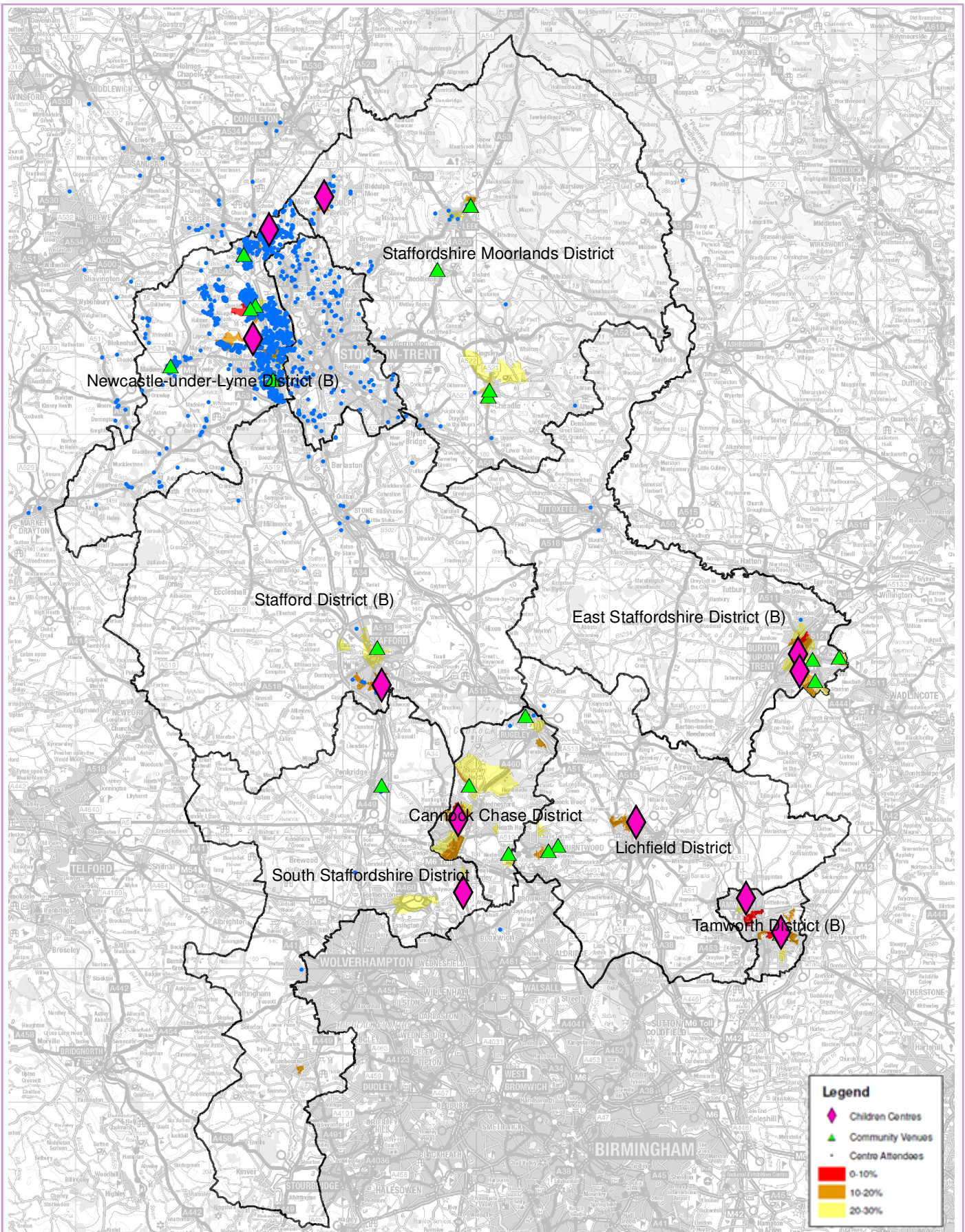
### EARLY YEARS REACH

#### Early Years Reach 0-30%, 2014/15 and 2015/16

Ward	2014/2015		2015/2016	
	% 0-4 Reach	% Reach 0-30% Deprivation	% 0-4 Reach	% Reach 0-30% Deprivation
Bradwell Ward	47	14.7%	95	29.8%
Butt Lane Ward	50	15.7%	78	24.5%
Chesterton Ward	129	26.4%	190	38.9%
Cross Heath Ward	123	34.6%	207	58.3%
Holditch Ward	146	39.9%	236	64.5%
Kidsgrove Ward	93	24.4%	112	29.4%
Knutton and Silverdale Ward	148	42.8%	221	63.9%
Seabridge Ward	61	23.7%	84	32.7%
Silverdale and Parkside Ward	72	25.6%	173	61.6%
Talke Ward	33	20.2%	70	42.9%
Thistleberry Ward	63	20.1%	60	19.1%
Town Ward	45	24.6%	81	44.3%
Wolstanton Ward	47	12.6%		
<b>Newcastle-under-Lyme</b>	<b>1,057</b>	<b>49.6%</b>	<b>1,607</b>	<b>75.4%</b>

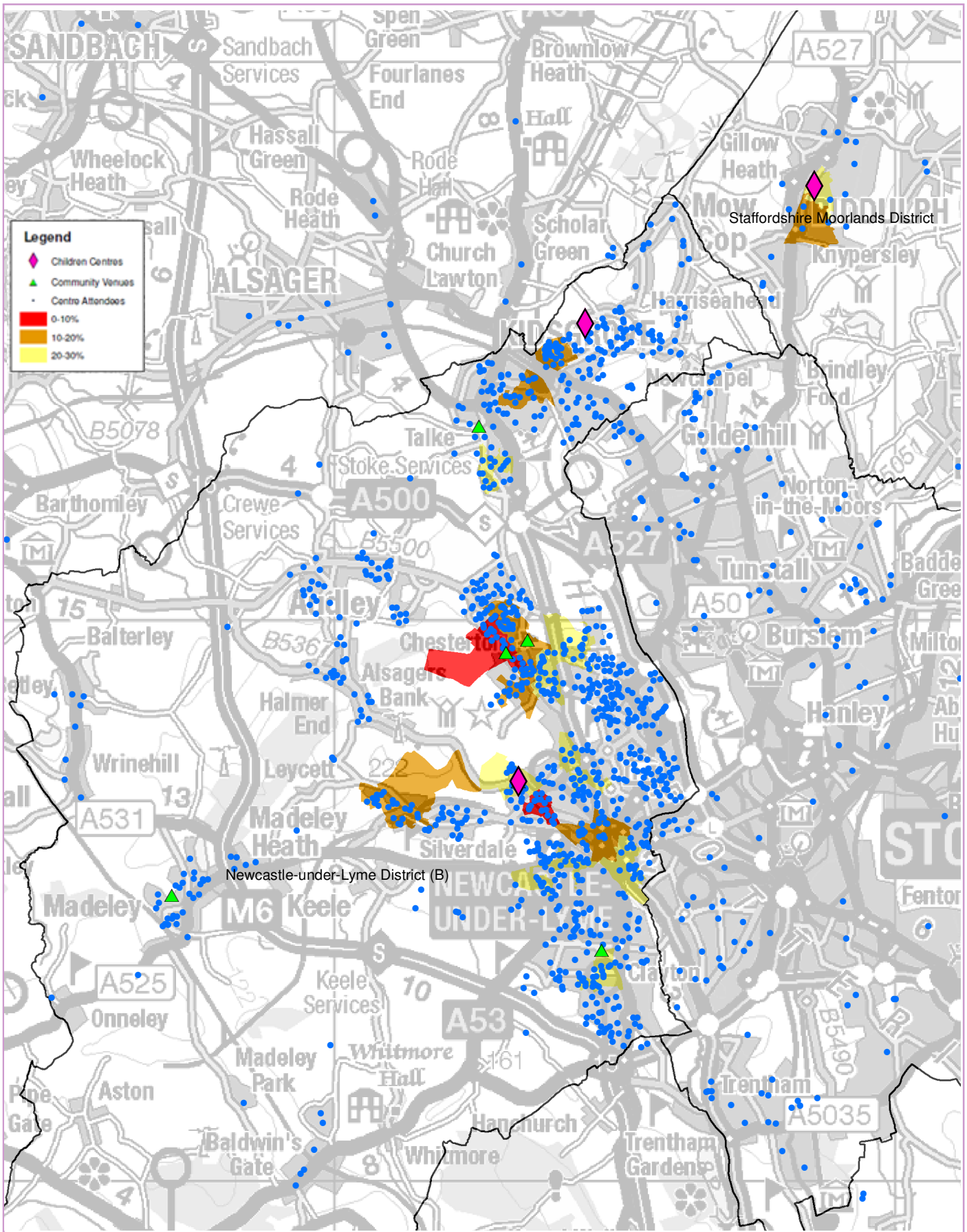


### CHILDREN'S CENTRE ATTENDANCE 2015/2016





### CHILDREN'S CENTRE ATTENDANCE 2015/2016





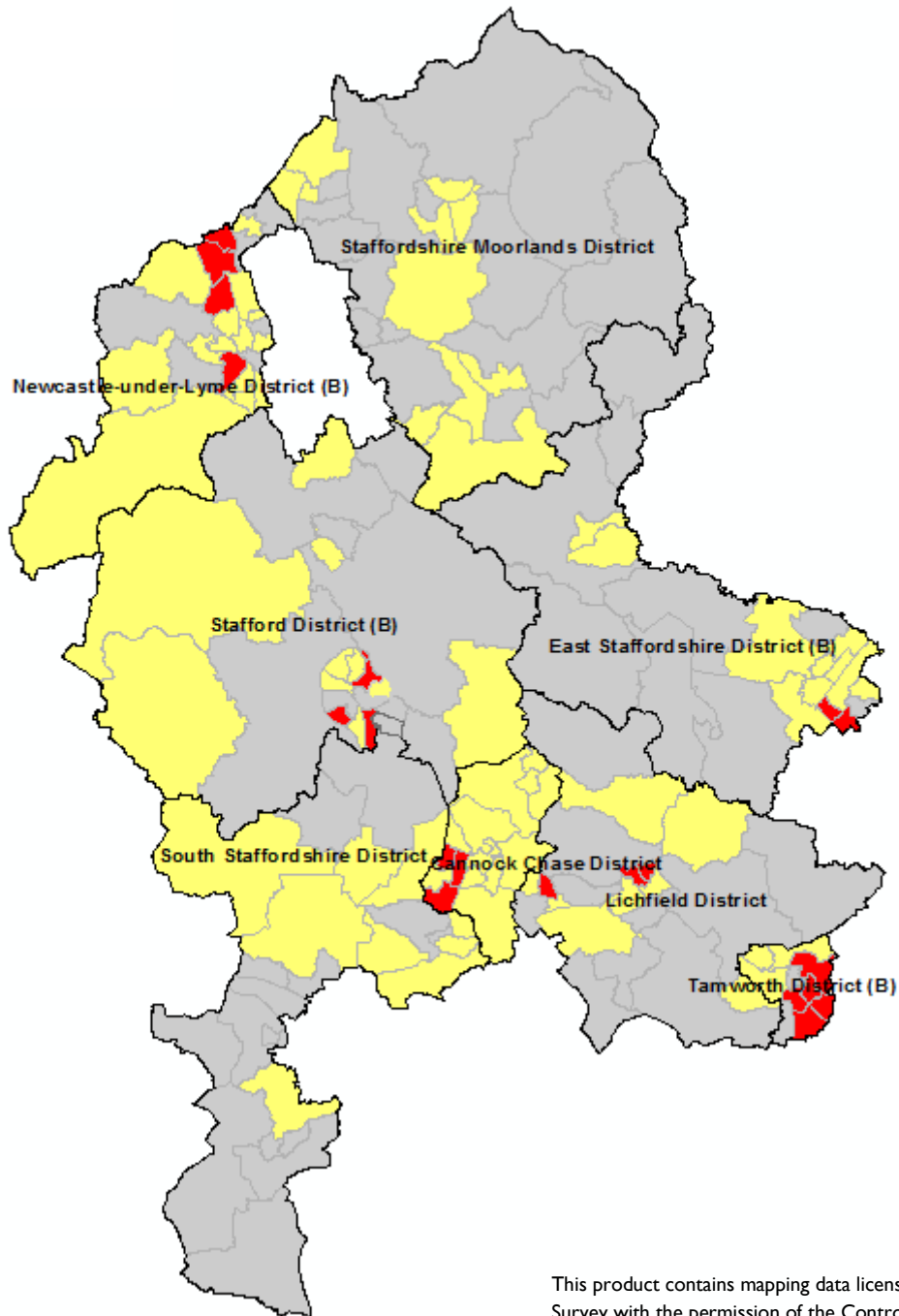
### UNDER-18 CONCEPTIONS

#### Under-18 Teenage Conceptions, 2012-2014

**Wards**

**Statistical Difference to England**

- Higher
- Similar
- Suppressed



This product contains mapping data licensed from Ordnance Survey with the permission of the Controller of Her Majesty's Stationary Office©

Crown Copyright and/or database right 2015. All rights reserved. Licence Number 100019422

### GENERAL FERTILITY RATES

#### General Fertility Rates per 1,000 women aged 15-44, 2011-2014

Ward	2011-2013	2012-2014	Statistical Difference to England
Audley and Bignall End	61	58.6	Similar
Bradwell	53	49.7	Lower
Butt Lane	59	65.8	Similar
Chesterton	66	64.9	Similar
Clayton	53	53.2	Similar
Cross Heath	58	57.9	Similar
Halmerend	52	52.2	Similar
Holditch	72	63.0	Similar
Keele	2	4.1	Lower
Kidsgrove	54	58.3	Similar
Knutton and Silverdale	76	75.9	Higher
Loggerheads and Whitmore	34	29.9	Lower
Madeley	61	63.1	Similar
May Bank	55	59.3	Similar
Newchapel	59	57.4	Similar
Porthill	54	53.8	Similar
Ravenscliffe	50	52.7	Similar
Seabridge	54	60.7	Similar
Silverdale and Parkside	66	69.1	Similar
Talke	54	54.9	Similar
Thistleberry	55	52.6	Lower
Town	47	44.7	Lower
Westlands	39	46.6	Lower
Wolstanton	62	59.1	Similar
<b>Newcastle-under-Lyme</b>	<b>52</b>	<b>52.3</b>	<b>Lower</b>
<b>Staffordshire</b>	<b>58</b>	<b>57.8</b>	<b>Lower</b>
<b>England</b>	<b>64</b>	<b>63.2</b>	

### LOW BIRTHWEIGHT

#### Low Birthweight Babies (under 2,500g) 2011-2014

Ward	2011-2013	2012-2014	Statistical Difference to England
Audley and Bignall End	8%	7.2%	Similar
Bradwell	4%	5.9%	Similar
Butt Lane	13%	11.8%	Higher
Chesterton	9%	7.9%	Similar
Clayton	5%	4.3%	Similar
Cross Heath	7%	8.4%	Similar
Halmerend	5%	4.2%	Similar
Holditch	8%	7.7%	Similar
Keele	s	16.0%	Similar
Kidsgrove	9%	8.0%	Similar
Knutton and Silverdale	8%	7.8%	Similar
Loggerheads and Whitmore	3%	3.5%	Similar
Madeley	5%	6.8%	Similar
May Bank	10%	8.0%	Similar
Newchapel	5%	s	
Porthill	5%	4.7%	Similar
Ravenscliffe	5%	6.7%	Similar
Seabridge	5%	6.3%	Similar
Silverdale and Parksite	10%	8.6%	Similar
Talke	6%	11.0%	Similar
Thistleberry	10%	8.0%	Similar
Town	7%	9.2%	Similar
Westlands	5%	5.7%	Similar
Wolstanton	11%	10.0%	Similar
<b>Newcastle-under-Lyme</b>	<b>8%</b>	<b>7.6%</b>	<b>Similar</b>
<b>Staffordshire</b>	<b>7%</b>	<b>7.2%</b>	<b>Similar</b>
<b>England</b>	<b>7%</b>	<b>7.3%</b>	

### BREASTFEEDING INITIATION AND PREVALENCE

#### Breastfeeding Prevalence (6-8 weeks) 2012-2015

Ward	2012-2013	2014-2015	Statistical Difference to England
Audley and Bignall End	34%	53.7%	Similar
Bradwell	31%	32.0%	Similar
Butt Lane	26%	24.6%	Lower
Chesterton	32%	37.5%	Similar
Clayton	41%	48.7%	Similar
Cross Heath	42%	33.3%	Similar
Halmerend	34%	42.4%	Similar
Holditch	27%	26.7%	Lower
Keele	s	s	
Kidsgrove	29%	18.2%	Lower
Knutton and Silverdale	24%	37.9%	Similar
Loggerheads and Whitmore	48%	52.0%	Similar
Madeley	29%	46.2%	Similar
May Bank	48%	45.9%	Similar
Newchapel	39%	27.6%	Similar
Porthill	33%	52.9%	Similar
Ravenscliffe	36%	41.0%	Similar
Seabridge	38%	57.6%	Higher
Silverdale and Parkside	30%	38.7%	Similar
Talke	27%	45.5%	Similar
Thistleberry	48%	52.5%	Similar
Town	43%	45.1%	Similar
Westlands	47%	57.1%	Similar
Wolstanton	37%	27.0%	Lower
<b>Newcastle-under-Lyme</b>	<b>35%</b>	<b>40.0%</b>	<b>Lower</b>
<b>Staffordshire</b>	<b>33%</b>	<b>33.5%</b>	<b>Lower</b>
<b>England</b>	<b>47%</b>	<b>43.9%</b>	

### THINK2

#### Think2 Childcare Places, Summer 2016

Ward	Eligible Families	Take up by child's address		Take up by address	
		Number	Percentage	Number	Percentage
Audley and Bignall End	18	14	78%	0	0%
Bradwell	20	15	75%	41	205%
Butt Lane	32	18	56%	31	97%
Chesterton	39	29	74%	31	79%
Clayton	15	8	53%	0	0%
Cross Heath	42	37	88%	22	52%
Halmerend	2	0	0%	12	600%
Holditch	36	32	89%	11	31%
Keele	3	2	67%	11	367%
Kidsgrove	28	18	64%	19	68%
Knutton and Silverdale	33	31	94%	26	79%
Loggerheads and Whitmore	7	3	43%	4	57%
Madeley	12	9	75%	5	42%
May Bank	13	9	69%	12	92%
Newchapel	7	4	57%	3	43%
Porthill	10	9	90%	3	30%
Ravenscliffe	13	9	69%	3	23%
Seabridge	9	10	111%	5	56%
Silverdale and Parksite	22	18	82%	14	64%
Talke	16	13	81%	8	50%
Thistleberry	24	22	92%	20	83%
Town	16	10	63%	50	313%
Westlands	6	4	67%	11	183%
Wolstanton	15	9	60%	36	240%
<b>Newcastle-under-Lyme</b>	<b>438</b>	<b>333</b>	<b>76%</b>	<b>378</b>	<b>86%</b>

\*Data provided is a combination of information from DWP & direct from childcare providers and may have changed by the date of this publication

### SUFFICIENCY

#### Childcare Sufficiency 0-2 years in PVI sector, Summer 2016

Ward	0-2 years				2 years			
	Number of children in district	Places	Vacancies	Vacancies %	Number of children in district	Places	Vacancies	Vacancies %
Audley and Bignall End	108	2	0	0%	57	1	0	0%
Bradwell	118	41	8	20%	64	46	5	11%
Butt Lane	122	3	0	0%	72	56	2	4%
Chesterton	184	4	0	0%	104	27	12	44%
Clayton	79	7	1	14%	39	8	4	50%
Cross Heath	130	3	0	0%	82	28	3	11%
Halmerend	68	14	4	29%	42	25	8	32%
Holditch	125	14	6	43%	89	28	12	43%
Keele	17	48	3	6%	3	32	2	6%
Kidsgrove	136	7	0	0%	87	32	8	25%
Knutton and Silverdale	135	18	5	28%	75	27	5	19%
Loggerheads and Whitmore	55	29	8	28%	54	32	5	16%
Madeley	87	0	0	-	50	8	1	13%
May Bank	129	49	5	10%	62	67	5	7%
Newchapel	57	5	1	20%	23	15	2	13%
Porthill	96	23	2	9%	42	21	2	10%
Ravenscliffe	55	20	3	15%	22	21	1	5%
Seabridge	109	12	1	8%	63	15	2	13%
Silverdale and Parksite	106	6	0	0%	53	18	7	39%
Talke	61	11	3	27%	33	22	6	27%
Thistleberry	120	63	18	29%	71	93	30	32%
Town	77	67	25	37%	39	72	20	28%
Westlands	74	4	0	0%	43	13	0	0%
Wolstanton	154	53	4	8%	73	89	6	7%
<b>Newcastle-under-Lyme</b>	<b>2,402</b>	<b>503</b>	<b>97</b>	<b>19%</b>	<b>1,342</b>	<b>796</b>	<b>148</b>	<b>19%</b>

### SUFFICIENCY

#### Childcare Sufficiency 2 - 4 years in PVI sector, Summer 2016

Ward	Think2				3-4 years			
	Number of children in district	Places	Vacancies	Vacancies %	Number of children in district	Places	Vacancies	Vacancies %
Audley and Bignall End	14	8	0	0%	136	31	0	0%
Bradwell	21	40	5	13%	137	117	20	17%
Butt Lane	32	27	2	7%	125	102	16	16%
Chesterton	38	49	20	41%	200	48	13	27%
Clayton	13	4	2	50%	82	6	0	0%
Cross Heath	33	13	3	23%	143	87	7	8%
Halmerend	2	8	2	25%	67	69	12	17%
Holditch	38	22	8	36%	152	22	10	45%
Keele	3	13	2	15%	21	64	4	6%
Kidsgrove	28	28	10	36%	157	49	24	49%
Knutton and Silverdale	35	37	12	32%	136	82	21	26%
Loggerheads and Whitmore	9	10	6	60%	96	65	17	26%
Madeley	9	6	1	17%	91	44	4	9%
May Bank	11	16	4	25%	111	72	5	7%
Newchapel	6	3	2	67%	83	46	10	22%
Porthill	11	4	1	25%	90	46	1	2%
Ravenscliffe	14	7	0	0%	64	40	4	10%
Seabridge	9	5	1	20%	85	15	2	13%
Silverdale and Parkside	21	18	7	39%	122	36	5	14%
Talke	15	10	0	0%	69	44	8	18%
Thistleberry	30	64	45	70%	123	111	23	21%
Town	16	58	20	34%	67	140	25	18%
Westlands	10	9	0	0%	110	138	18	13%
Wolstanton	13	29	4	14%	147	133	19	14%
<b>Newcastle-under-Lyme</b>	<b>431</b>	<b>488</b>	<b>157</b>	<b>32%</b>	<b>2,614</b>	<b>1,607</b>	<b>268</b>	<b>17%</b>

### CHILDHOOD OBESITY

#### Excess Weight, Children aged 4 - 5 2010 - 2015

Ward	2010 - 2013	2012 - 2015	Statistical Difference to England
Audley and Bignall End	26%	27.3%	Similar
Bradwell	21%	26.1%	Similar
Butt Lane	29%	17.1%	Similar
Chesterton	27%	23.5%	Similar
Clayton	23%	24.7%	Similar
Cross Heath	20%	19.6%	Similar
Halmerend	29%	29.4%	Similar
Holditch	28%	24.1%	Similar
Keele	25%	25.7%	Similar
Kidsgrove	27%	26.1%	Higher
Knutton and Silverdale	18%	23.2%	Similar
Loggerheads and Whitmore	22%	16.0%	Similar
Madeley	21%	17.5%	Similar
May Bank	19%	14.9%	Lower
Newchapel	24%	25.0%	Similar
Porthill	17%	25.2%	Similar
Ravenscliffe	21%	18.5%	Similar
Seabridge	21%	22.8%	Similar
Silverdale and Parkside	26%	19.8%	Similar
Talke	15%	27.4%	Similar
Thistleberry	18%	22.9%	Similar
Town	22%	16.7%	Similar
Westlands	19%	16.0%	Similar
Wolstanton	17%	23.6%	Similar
<b>Newcastle-under-Lyme</b>	<b>22%</b>	<b>22.3%</b>	<b>Similar</b>
<b>Staffordshire</b>	<b>23%</b>	<b>23.6%</b>	<b>Higher</b>
<b>England</b>	<b>23%</b>	<b>22.2%</b>	



### CHILDHOOD OBESITY

#### Obesity, Children aged 4 - 5 2010 - 2015

Ward	2010 - 2013	2012 - 2015	Statistical Difference to England
Audley and Bignall End	10%	9.9%	Similar
Bradwell	11%	13.3%	Similar
Butt Lane	7%	5.1%	Similar
Chesterton	12%	12.2%	Similar
Clayton	10%	9.7%	Similar
Cross Heath	8%	6.0%	Similar
Halmerend	13%	17.5%	Higher
Holditch	10%	8.8%	Similar
Keele	s	s	
Kidsgrove	14%	10.9%	Similar
Knutton and Silverdale	6%	8.5%	Similar
Loggerheads and Whitmore	9%	s	
Madeley	11%	7.5%	Similar
May Bank	9%	5.4%	Similar
Newchapel	10%	9.4%	Similar
Porthill	9%	7.0%	Similar
Ravenscliffe	9%	6.5%	Similar
Seabridge	9%	10.2%	Similar
Silverdale and Parksite	8%	9.6%	Similar
Talke	8%	9.5%	Similar
Thistleberry	10%	10.5%	Similar
Town	s	8.3%	Similar
Westlands	s	4.7%	Similar
Wolstanton	10%	11.0%	Similar
<b>Newcastle-under-Lyme</b>	<b>9%</b>	<b>9.0%</b>	<b>Similar</b>
<b>Staffordshire</b>	<b>9%</b>	<b>9.5%</b>	<b>Similar</b>
<b>England</b>	<b>9%</b>	<b>9.3%</b>	

## FIRST DAY AT SCHOOL

### EARLY YEARS FOUNDATION STAGE PROFILE

#### Pupils achieving Good Level of Development, 2015

Ward	GLD	Gender		Free School Meals		SEN		
		Male	Female	FSM	Non-FSM	No SEN (N)	Education Health Care Plan or Statement (E) or (S)	SEN Support (K)
Audley and Bignall End	68.3%	63.2%	76.0%	50.0%	70.2%	72.9%	0.0%	0.0%
Bradwell	73.9%	67.6%	81.3%	50.0%	75.0%	78.1%		0.0%
Butt Lane	66.1%	48.1%	82.8%	50.0%	68.8%	70.6%	0.0%	33.3%
Chesterton	77.8%	74.5%	83.3%	63.6%	80.0%	84.7%	0.0%	28.6%
Clayton	74.1%	70.0%	76.5%		74.1%	76.9%	0.0%	0.0%
Cross Heath	75.9%	65.7%	82.7%	61.5%	81.0%	84.1%	0.0%	20.0%
Halmerend	81.5%	72.2%	100.0%	100.0%	80.0%	84.0%		
Holditch	70.8%	61.0%	79.2%	52.4%	76.5%	78.7%	0.0%	30.8%
Kidsgrove	70.8%	69.7%	71.9%	50.0%	72.9%	78.0%	0.0%	0.0%
Knutton and Silverdale	59.7%	50.0%	68.8%	60.0%	71.1%	71.1%		75.0%
Loggerheads and Whitmore	77.1%	72.7%	80.8%	50.0%	77.8%	81.0%	0.0%	50.0%
Madeley	73.1%	72.7%	73.3%	42.9%	79.5%	84.1%		14.3%
May Bank	82.0%	77.4%	86.7%	100.0%	81.0%	84.2%		33.3%
Newchapel	65.5%	44.4%	75.0%		65.5%	65.5%		
Porthill	89.7%	80.0%	100.0%	50.0%	91.9%	92.1%		0.0%
Ravenscliffe	72.2%	60.0%	87.5%	0.0%	76.5%	78.1%	100.0%	0.0%
Seabridge	83.3%	72.7%	100.0%	100.0%	82.4%	87.1%		60.0%
Silverdale and Parksite	77.0%	75.0%	79.3%	42.9%	81.1%	81.8%	0.0%	25.0%
Talke	68.0%	50.0%	90.9%	60.0%	70.0%	70.8%	0.0%	
Thistleberry	76.5%	65.9%	95.8%	66.7%	76.6%	87.5%	0.0%	22.2%
Town	77.8%	71.4%	84.6%	100.0%	76.0%	82.6%		50.0%
Westlands	79.3%	74.3%	87.0%	0.0%	83.6%	88.2%	0.0%	16.7%
Wolstanton	83.3%	76.9%	90.9%	71.4%	84.6%	85.3%		50.0%
<b>Newcastle-under-Lyme</b>	<b>74.8%</b>							
<b>Staffordshire</b>	<b>73.8%</b>	<b>66.9%</b>	<b>80.9%</b>	<b>58.4%</b>	<b>75.3%</b>	<b>77.6%</b>	<b>2.0%</b>	<b>28.0%</b>
<b>England</b>	<b>69.0%</b>							