

Family Hubs

Debbie Nash – Family Hub Manager

July 2023

Family Hubs: Need for Change

- The Government's 2019 Manifesto pledged to champion Family Hubs across England.
- In December 2020 the Minister for Children, Vicky Ford, outlined plans to create a National Centre of Excellence for Family Hubs, funded by the Department for Education (DfE).
- The Best Start for Life Review: A Vision for the 1,001 Critical Days outlined a programme of work to ensure the best support during those crucial first 1001 days, this supports babies to maximise their potential for lifelong emotional and physical wellbeing.
- In Staffordshire we and our partners have made a commitment to change the way we currently deliver services for families locally.
- The DfE and DHSC announced in April 2022 the 75 local authorities who would become pilot areas for the Family Hubs and best start in life scheme. Staffordshire was **not** allocated funding for Family Hubs.

Family Hubs: Need for Change

- Children, young people and their families and communities already benefit from a range of services, provision and activities offered across partners.
- It can be confusing and difficult to navigate, not knowing who to contact or what support is available to access. This can result in spending too long getting to the right help and support to meet their needs.
- We want Staffordshire to develop a Family Hub Model of delivery to support families with children 0-19 (25 with SEND) as part of this commitment.
- We have an existing network of 11 Children's Centres spread across the 8 districts. We think that the Family Hubs provide the opportunity to build on these local community assets working with other partners to achieve a broader network of Early Help Support.

What is the vision for Family Hubs?



- To provide families with the integrated support they need to care for their children from conception, throughout the early years and into the start of adulthood.
- Enable parents to establish a firm foundation for their children to enable them to meet their full potential in life.

What are Family Hubs?

- To provide families with the **RIGHT HELP**, at the **RIGHT TIME** and in the **RIGHT PLACE**. They are a critical way in which we will deliver our Early Help Strategy.
- Not just a physical place - A way of working together to bring all the support families may need from pregnancy through to young people turning 18 (25 if they have a disability).
- Take a 'whole family approach' in the way we support families.
- Use predictive analysis to determine needs of the community and work with those communities using an evidence-based approach to develop partnerships and support to meet the needs of families as **early** as possible.
- Bring together early help and interventions delivered by the voluntary and charity sectors, Children's Centres, Early Years settings, Schools, Health, Housing, Police, Fire and Rescue, District and Borough Councils and local voluntary and community service providers.
- Have support and services that are accessible to all by being delivered in a variety of ways from numerous venues e.g. Children's Centres, Libraries, Community Venues, Youth Clubs, Leisure Centres.
- We will develop a core virtual offer.

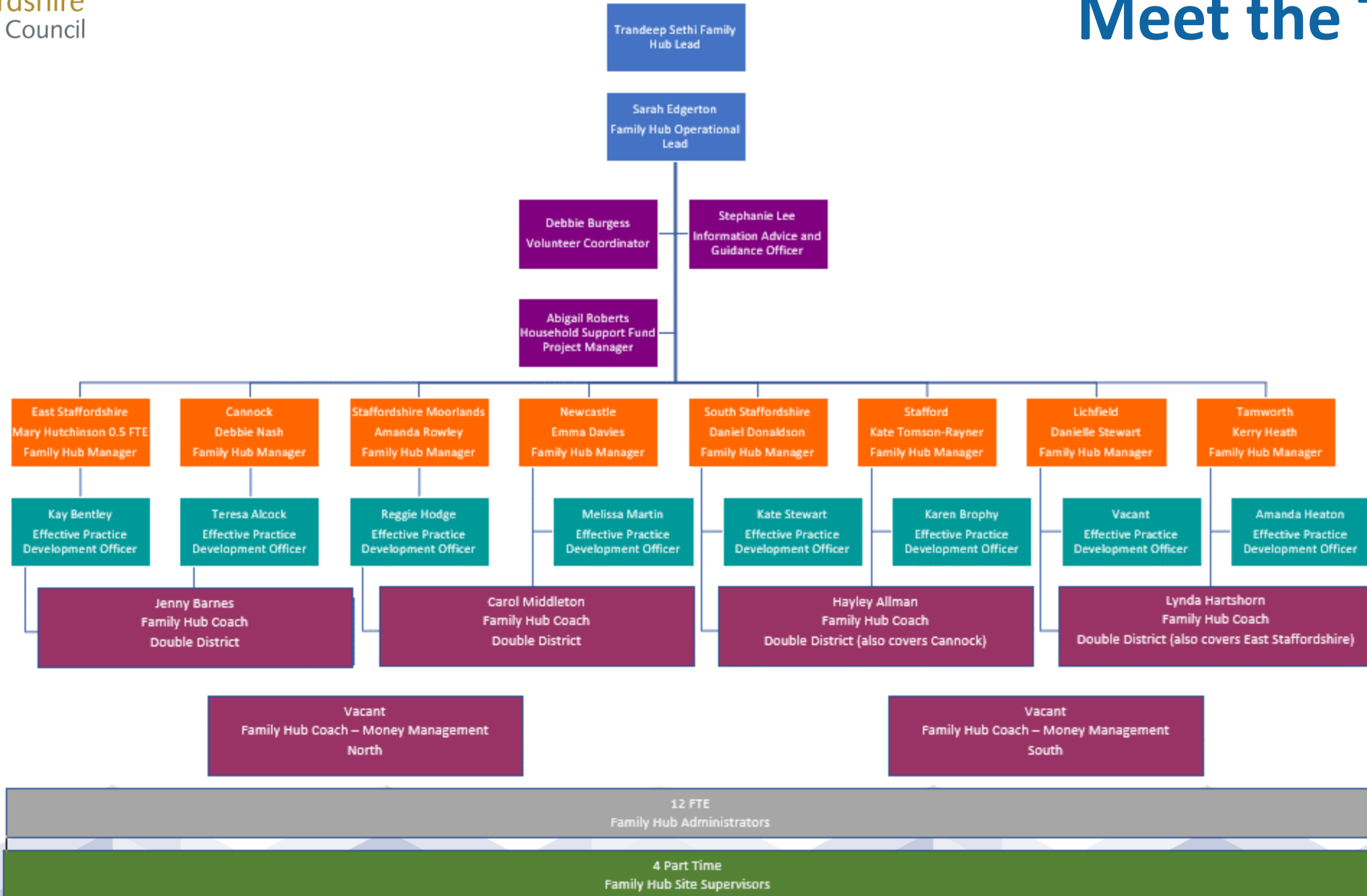
Early Help



BRFC

Family Hubs





Where are we now?

- Transformation complete – Went live on 1st May 2023
- Coming to the end of workforce recruitment
- Started the brand design
- Developing the Staffordshire Early Help Plan – Draft Version now live
- Handover from Early Years Coordination Service to new Family Hub Managers
- Increased the property portfolio to now include Basin Lane and Faraday Road
- Commenced the East Staffordshire pilot of having the registrar based in the Children's Centre registering births and marriages

What are our next steps?

- Workforce development
- Know your district
- Grow each district timetable of services for families to access
- Embed the brand design
- Share the Draft Staffordshire Early Help Plan with partners for their feedback and inclusion ready for a final version and commence delivery
- Consulted to change Children's Centres into Family Hubs – 270 responses 90% agreed with the proposals
- Early Years Forum now under Family Hubs and chaired by Family Hub Managers
- If pilot successful, expand registrars being based from Children's Centres

Useful Links

- [Family Hubs and Start for Life programme: local authority guide - GOV.UK \(www.gov.uk\)](https://www.gov.uk/guidance/family-hubs-and-start-for-life-programme-local-authority-guide)

Contacts

- Trandeep Sethi – Family Hub Development Manager
- Trandeep.sethi@staffordshire.gov.uk
- 01283 239622
- Sarah Edgerton – Family Hub Operational Lead
- Sarah.Edgerton@staffordshire.gov.uk
- 01782 485536

Any Questions?

