

Staffordshire Rural Hub Town Profile – Leek

Vision: “Leek will be an important civic and service centre for its population and will further strengthen its role as the principal town in the District. The quality of the retail offer in the town centre will have improved further, and the diversity of employment opportunities, facilities, and services it offers increased. It will have enhanced its role as a tourist attraction, building on its special character, heritage and built environment assets.” *Staffordshire Moorlands Local Plan (2020)*

Local Economy

There are 6,800 jobs in Leek (2019)¹

19% Retail (England 9%)

10% Manufacturing (England 8%)

9% Arts & Leisure (England 5%)

7% Accommodation & Food (England 7%)

7% Financial & Insurance (England 4%)

Key employers (250+ employees)



Key employers (50-249 employees)



F. Ball and Co. Ltd.



People

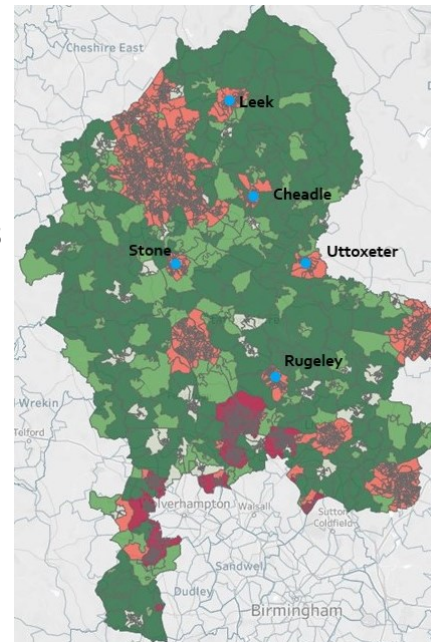
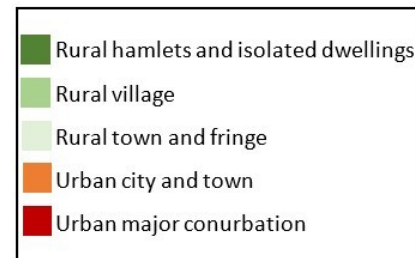
Leek is home to 20,260 residents (2019):

61% working age (16-64) (England 63%)

22% aged 65+ (England 19%)

Place

- ✓ Peak District : 3 miles
- ✓ Derby: 50 minutes
- ✓ Manchester: 1 hour
- ✓ Birmingham: 90 minutes



Deprivation

Leek scores well on the Index of Multiple Deprivation (IMD) for 'Barriers to Housing and Services' and 'Crime', but below average for 'Education'.

Strengths and Opportunities

- ✓ Strong employment base, with global businesses (e.g. Ornuu, Capita)
- ✓ Thriving high street – independent retailers, local branding, low shop vacancy rates
- ✓ Local centre for agricultural supplies
- ✓ Tourism opportunities:
 - Proximity to the Peak District
 - Visitor-focused shops, markets & facilities
 - Historic and attractive townscape

Challenges

- ✓ Empty mill buildings and contaminated industrial land (viability gap)
- ✓ Weak transport links (especially public transport, and no rail station)
- ✓ Lack of modern business space and serviced land for business growth

1. Agriculture catchment employment is not well represented in Lower Layer Super Output Area data. Employment 8% (2,421 jobs) in Staffordshire Moorlands. Produced by WECD on behalf of Staffordshire County Council.

Data sources: ONS population estimates (2019), Staffordshire County Council IDBR (2020), ONS BRES (2019), MHCLG IMD (2019). www.w-ecd.com