



**Community Services  
Food Service Plan**

## **CONTENTS**

### **SECTION 1: Service Aims and Objectives**

- 1.1 Aims and Objectives
- 1.2 Links to Corporate Objectives and Plans

### **SECTION 2: Background**

- 2.1 Profile of the Local Authority
- 2.2 Organisational Structure
- 2.3 Scope of the Food Service
- 2.4 Demands on the Food Service
- 2.5 Enforcement Policy

### **SECTION 3: Service Delivery**

- 3.1 Food and Feeding Stuffs Premises Inspections
- 3.2 Food and Feeding Stuffs Complaints
- 3.3 Home Authority Principle
- 3.4 Advice to Business
- 3.5 Food and Feeding Stuffs Inspection and sampling
- 3.6 Control and investigation of Outbreaks and  
Food Related Infectious Disease
- 3.7 Food Safety Incidents
- 3.8 Liaison with Other Organisations
- 3.9 Food and Feeding Stuffs Safety and Standards Promotion

### **SECTION 4: Resources**

- 4.1 Financial Allocation
- 4.2 Staffing Allocation
- 4.3 Staff Development Plan

### **SECTION 5: Quality Assessment**

- 5.1 Quality Assessment

### **SECTION 6: Review**

- 6.1 Review against the Service Plan
- 6.2 Identification of any variation from the Service Plan
- 6.3 Areas for Improvement

### **APPENDIX 1: Organisational Structure of Community Services**

### **APPENDIX 2: Food Sampling Plan 2010/2011**

## **SECTION 1: Service Aims and Objectives**

### **1.1 Aims and Objectives**

The food enforcement service, consistent with the Food Standards Agency (FSA) Framework Agreement on Local Authority Food Law Enforcement, seeks to establish a balanced mix of activities driven by demand, risk based inspection, and intelligence.

Food law and related programmes and projects can play an important part in ensuring the availability of safe, reasonably priced, nutritious food and thereby make a valuable contribution to the health of communities.

Our resources are used to discharge responsibilities given by Government, but in a way that makes sense to the communities we serve - the people of Staffordshire. To this end:

- We use the opportunities given by Government to exercise an innovative and creative role in public protection and the health of society.
- We use the principles set out by the Local Better Regulation Office (LBRO) to ensure straightforward and effective regulation, that is responsive to business needs, promoting economic prosperity and consumer protection.
- We are moving towards using the National Intelligence Model for prioritising and planning investigations.
- We aim to make our services visible, relevant and accountable to local people.
- We aim to play a full part in making Staffordshire County Council a role model for others to follow in linking our food services to the wider public health agenda.

### **1.2 Links to Corporate Objectives and Plans**

Staffordshire County Council is committed to the implementation of its Local Area Agreement (LAA). The LAA is grouped into five Block Thematic Plans:

- Children and Young People
- Healthier Communities & Older People
- Safer and Stronger Communities
- Economic Development and Enterprise
- Sustainable Communities

The food service in Staffordshire County Council is provided by Community Services, which includes the Trading Standards Service, Public Analyst, Animal Health Team, Health Development Team, Community Safety and Community Development. We have actively

supported the development of the LAA and ensure the work of the food service is integral to these thematic plans.

The Food Service Plan links to the Community Services:

- Service Delivery Plan
- Corporate Health Strategy
- Community Safety Strategy
- Strategic Assessment for Trading Standards Service
- Animal Health and Petroleum Business Plan

## **SECTION 2: Background**

### **2.1 Profile of the Local Authority**

Staffordshire is the fifth largest Shire County in England. Located in the industrial heartland of Britain positioned between Manchester and Birmingham, with Shropshire to the west and Derbyshire to the east, the County consists of eight districts, several large towns and one city set amongst 262,333 hectares of rural countryside. Some 817,000 people live in Staffordshire (1,049,000 including Stoke – on – Trent) , accounting for approximately 15% of the West Midlands Regional population. Staffordshire's population has grown at a rate of 1.8% since 1991. The population of Staffordshire is projected to increase by 1.5% by 2026.

The geographic location and make-up of the County means that we have scattered centres of population, isolated rural communities and some of the fastest growing business parks in the region. This requires a creative approach to service delivery to ensure equal access for all. The needs will vary greatly according to geographical location. The County is home to over 25,000 businesses and 5,000 farms. Although tourism is now one of Staffordshire's most significant growth industries, the County is also home to the large breweries of Coors and Marstons at Burton-upon-Trent and other major food manufacturers, such as Kerry Foods, Premier Brands and Foxes Biscuits.

The Index of Multiple Deprivation identifies areas of local deprivation and inequalities using a variety of indicators including employment, income, health, education, housing and access to services. In Staffordshire County there are 22 wards ranked in the top 10% and 20% most deprived wards nationally. In north Staffordshire there are 7 wards within the top 10% and 20% nationally most deprived wards, with over half concentrated in Newcastle-under-Lyme District. In southern Staffordshire there are 15 wards within the top 10% and 20% nationally most deprived wards with 7 wards concentrated in East Staffordshire District. In the south, Tamworth is a designated Spearhead priority area.

Areas of the Staffordshire Moorlands and rural parts of Newcastle-under-Lyme fall into the moderate deprivation category. These areas of highest multiple deprivation also tend to display problems related to health, education, low incomes and poor housing. There is a high concentration of agricultural holdings in this area. Priorities need to take account of, and services will need to be tailored to, urban and rural settings. The isolation of some rural communities can amplify the impact of certain types of detriment, since access to services and inclusion can be more difficult.

In line with national trends, Staffordshire's population is ageing with the under 16 age group making up just 20% of the population and the 60 year olds and over group making up 21%. As this group of people continue to age, they will become more frail and dependent and have the highest social care needs. The number of older people with mental health needs is predicted to increase by 10% in the next 10 years and will require particular attention. In the longer term, there are forecasts of a 75% increase in the above 75 age groups and 39% in the 65 to 74 year old age groups by 2026. This trend is likely to place additional pressure on existing demands for healthcare and social services provision, as the population continues to become older in structure.

The Directorate Equality Action Plan 2006-8 identifies that people of black and minority ethnic origin make up 2.4% of Staffordshire's population. The largest ethnic minority is Pakistani, with small numbers of African Caribbean, Polish and Ukrainian. A significant proportion live in Burton on Trent and 25% of the population are under 20 years of age.

The 2000 Rural Services Survey shows few services in the rural communities in Staffordshire. Issues for people living rural areas include: access and public transport; low income levels; caring and family responsibilities; and reliance on mail order services. It is recognised that residents in urban areas may also have difficulty accessing key services due to a variety of factors including variations in income levels.

## **2.2 Organisational Structure**

The organisation of Community Services is shown in Appendix 1.

Staffordshire County Council sits within a two-tier local government structure with eight district councils. It has a constitution which sets out how the Council operates, how decisions are made and the procedure to be followed in order to ensure that its operation and organisation is efficient, transparent and accountable.

Ultimate management responsibility for food service delivery lies with the Deputy Corporate Director of Community Services, supported by two County Managers, responsible for Healthier Communities and Safer Communities. The food enforcement service is delivered, by the Safer Communities Business Support Team which is responsible for food service delivery at all food and feeding stuffs premises except farms. The team includes three Business Support Officers who have a specialist knowledge of food.

The Healthier Communities, Farming and Agriculture team deliver the food service on farms, with respect of milk, food and feed hygiene and animal by-products. The Head of Farming and Agriculture acts as the Feed Lead Officer, providing support to all officers involved in work on animal feed.

Dietary and nutritional advice is provided by the Healthier Communities, Health Development Team which includes an in-house Community Food Co-ordinator, who is a qualified dietitian. The Health Development Team is responsible for work on health promotion, including healthy eating. The Principal Trading Standards Officer (PTSO) – Food, is also linked to this team. The role of the PTSO - Food includes liaison between the Health Development Team, the Business Support Team and Consumer Education Team, ensuring coordination between the healthy eating and the food enforcement work within the service. The PTSO – Food is the Food Lead Officer.

Public Analyst services are provided in-house by Staffordshire Scientific Services working in partnership with Leicestershire Scientific Services. Stoke PHL is the Food Examiner, if and when this service is needed

The Consumer Education Team organise more than 600 voluntary Community Watchdogs who ensure stakeholder and community links across the county.

### 2.3 Scope of the Food Service

The County Council provides the Trading Standards service which is responsible for enforcement of food standards, animal feeds and fertilisers legislation. Food hygiene services are provided by each of the eight district councils. The Trading Standards Service adheres to the Food Law Code of Practice whilst using an intelligence lead approach to intervention frequencies.

Delivered alongside the food service are enforcement activities relating to:

- Product safety and the safety of petroleum and explosives.
- Metrology
- Trade Descriptions, pricing and consumer credit.
- Community Safety and underage sales
- Animal Health & welfare and bio-security.
- Fraud and Special Investigations.
- Claims Management Unit

### 2.4 Demands on the Food Enforcement Service

Staffordshire County Council provides the food service for 5125 food premises. This figure includes 133 food manufacturers and packers, 1204 food retailers and 2920 licensed/unlicensed caterers. Feed hygiene and Food hygiene at primary production level is carried out at 3600 farms. There are 57 premises which are approved by the Meat Hygiene Service and 1266 registered premises under Feeding Stuffs legislation. These include 19 feeding stuffs manufacturers plus 7 who manufacture pet food.

Premises are risk assessed using the LACORS scheme as follows:

	Food premises	Feeding Stuffs premises
High Risk	140	13
Medium Risk	2437	567
Low Risk	2369	2230

The food service is delivered via the Business Support team which is based at three offices, Stafford, Newcastle under Lyme and Burton on Trent, and via the Farming and Agriculture Team, based at Stafford. Office opening hours are 8.30am to 5pm. The service is also available outside of office opening hours, when this is appropriate, with the Farming and Agriculture Team and Scientific Services operating a 24 hour emergency response service.

There are no local requirements associated with specialist or complex processes.

### 2.5 Enforcement Policy

Staffordshire County Council is committed to, and has signed up to, the Regulators Compliance Code and this is reflected in the Enforcement Policy operated by Staffordshire County Council.

The Enforcement Policy meets guidance given by the Home Office, the Food Safety Act 1990 Code of Practice and other published guidance (i.e. Local Authorities Co-ordinating Body on Food and Regulatory Standards (LACORS) Chief Officer circulars). It has been produced after consultation with community groups, Chambers of Commerce and other business groups.

## **SECTION 3: Service Delivery**

### **3.1 Food and Feeding Stuffs Premises Inspections**

Food and feeding stuffs premises are risk assessed using the LACoRS / OFT Risk Assessment. Interventions are undertaken on a risk-assessed basis. Each year, Staffordshire's Trading Standards officers aim to complete, programmed interventions at:

100% of all food and feeding stuffs premises classified as 'high risk' and  
44% of all food premises classified as 'medium risk'.

Interventions will be carried out in accordance with the Food Law Code of Practice as follows:

- High risk businesses due for intervention will receive a full or partial inspection.
- Producer / retailers and supermarkets will receive a full or partial inspection
- Other Medium risk businesses due for intervention which were not broadly compliant at last inspection will receive a full inspection.
- Medium risk businesses which were compliant at last inspection will receive a visit to carry out monitoring / surveillance.

The remaining 6% of medium risk premises which are not being targeted for an intervention will receive an inspection or advisory visit for another trading standards purpose (e.g. under age sales advice or fireworks storage), the officer carrying out this visit will provide intelligence to the Principal TSO – Food on whether a food inspection is needed.

Medium risk feeding stuffs premises (largely on farm mixers) will be inspected as resources allow.

A high priority is always given to meeting these targets, although a number of food premises classified as 'low risk' may also be inspected each year. Many 'high' and 'medium' risk premises receive additional visits for sampling or surveillance purposes or in response to consumer complaints. Based on 2008/2009 figures it is estimated that 20 premises will need a revisit during the year.

An estimate of the resources needed for food interventions:

Premises risk	Number of premises	Number of Inspections	Officer Days
High	140	140	280
Medium (Inspection)	2437	125	63
Medium (surveillance)		1087	272
Total	2577	1212	615

During 2010 / 11 we will be consolidating the ongoing partnership work with the 8 District Councils within Staffordshire.

This work will include:

- Joint Trading Standards and Environmental Health inspections to food manufacturers.
- The sharing of intelligence and best practice with regard to food displayed for sale after it's use by date. This work will include development of systems to ensure information sharing and consistent enforcement throughout the County.
- Environmental Health providing information on compliance of Trading Standards Legislation at caterers who are low risk.

Enforcement on farms is the function of the Animal Health Team. With current legislative change, additional staff have been recruited to deal with the increased workload relating to food on farm. As new premises register and the full impact of the feed law enforcement code of practice is realised a clearer understanding of the workload will be developed.

### **3.2 Food and Feeding Stuffs Complaints**

All complaints are dealt with in accordance with the Food Safety Act Code of Practice, with each complaint being assessed for investigation, advice or referral as appropriate. Based on last years figures it is likely that the service will receive approximately 50 complaints concerning food and animal feeding stuffs.

It is estimated that these will take 100 officer days to investigate.

### **3.3 Home Authority Principle**

Staffordshire Trading Standards has adopted the LACORS' 'Home Authority Principle'. There are 44 food companies listed by LACORS, for which we act as Home Authority. In addition to this there are informal arrangements with other companies based in Staffordshire to provide business support, such as advice, assistance and to discuss matters referred by other local authorities.

It is estimated that 80 officer days are needed for this work, in addition to the time accounted for Inspections.

Staffordshire County Council support the LBRO Principal Authority initiative and will endeavour to provide this service for any business who request this service.

### **3.4 Advice to Business**

Business Advice focuses particularly on the needs of small companies (SME's). The Business Support Officers lead on this, although the increased emphasis on the business support role of Trading Standards ensures that every member of staff who has contact with businesses is involved in this support role.

In 2009/10, the Service received over 350 formal requests for advice or information from food businesses.. It is expected that this level of request will be continued into the 2010/11 year. In addition to these requests, advice is given to businesses during and after inspections, following changes to legislation and in response to Food Alerts.

Together this equates to approximately 175 officer days. This advice is in the form of Business Advice leaflets, standard letters, and letters which are specific to the business.

The Animal Health Team includes a Farm Advisor who provides immediate advice to farmers. Part of the function of the post is to provide a dynamic proactive advice service to the farming community and the role will develop to include the new controls.

### **3.5 Food and Feeding Stuffs Inspection and Sampling**

**3.6** Staffordshire County Council's Trading Standards submit over 500 samples to the Public Analyst. A further number are examined or screened.

The number of samples checked by Staffordshire County Council reflects a genuine commitment to ensuring that food and feed standards are maintained in the County. Samples fall into one of the following categories:

- Targeted sampling; high health/social inclusion relevance. This includes specific food projects relevant to 'at-risk' populations and targets (mis)labelling issues around fat, salt and sugar. This work also targets new and emerging markets of health claims on food. Trading Standards and Scientific Services work closely on this area of work.
- Targeted sampling; high corporate relevance. This includes contract monitoring and offering a health/food safety resource to the local authority and/or partnerships. This work targets food which is supplied by public authorities to vulnerable adults and children. Health Development take the lead supported strongly by the Business Support Team.
- Targeted Sampling; business support. This includes monitoring of foods and feeding stuffs produced in Staffordshire to ensure that the composition and labelling of the food and feed is correct and to ensure the feed is safe to be fed to animals. The Business Support Team takes the lead on this, supported by Scientific Services and the Farming and Agriculture Team, which samples feeding stuff on farms.

This year will see the budget for analysis of samples submitted to the Scientific Services laboratory reduced by 15%. Discussions have taken place to ensure that the nature of the analysis requested is more targeted, in order to use the budget in an intelligent manner. See Appendix 2 for more detail on the sampling programme.

It is estimated that this food sampling will take 2 officers (full time equivalent) plus 1.5 Animal Health Officers for on-farm sampling.

### **3.7 Control and Investigation of Outbreaks and Food Related Infectious Diseases**

Complaints and notifications concerning food poisoning or food-related infectious diseases are referred to the appropriate District Council Environmental Health service, or other appropriate agency in accordance with the Code of Practice issued under the Food Safety Act.

Trading Standards officers are available to work alongside colleagues in district councils or the Food Standards Agency should the need arise. The Public Analyst is also available to assist the Public Health Laboratory Service, for example with the analysis for pathogens. In general the Public Analyst undertakes chemical analysis whilst the Public Health Laboratory Service tests for microbiological pathogens. Animal Health Staff also work closely with the Veterinary Laboratories Agency, Animal Health (formerly State Veterinary Service), Veterinary Medicines Directorate and The Food Standards Agency in relation to contaminated or unsafe animal feed on farms, as well as outbreaks of zoonoses.

### **3.7 Food Safety Incidents and Emergencies**

Food Alerts are dealt with in accordance with the Food Safety Act Code of Practice.

The Principal Trading Standards Officer – Food notifies the Food Standards Agency of food safety incidents, and receives notification of Food Alerts from the Food Standards Agency.

On receipt of a Food Alert, by the Principal Trading Standards Officer – Food an e mail is sent to the Heads of Service and County Managers, with details of the Alert and a recommendation of appropriate action. This action may include issuing a Press Release or Watchdog Alert, visiting premises or sending a mailshot. The Heads of Service then initiate an appropriate response. Details of this action are then stored electronically, with shared access for all staff.

In addition to the actions within Trading Standards, when appropriate, the Principal Trading Standards Officer – Food, sends an e mail to food contacts at all Staffordshire District Council Environmental Health Departments, to ensure a co-ordinated response.

In the case of the Principal Trading Standards Officer – Food being absent at the time of the Food Alert, a Business Support Officer deputises.

Any issues relating to safety of animal feeds on Farm would be referred directly to the appropriate agency from the Farming and Agriculture Team.

### **3.8 Liaison with Other Organisations**

Staffordshire County Council's Community Services are active participants in several liaison groups covering the food enforcement and health / food strategy dimensions:

Food Safety and Standards

- Staffordshire and Shropshire Food Liaison Group - comprising of eight district councils, three unitary councils and Staffordshire County Council. Work includes bi-monthly meetings and liaison regarding Food Alerts. Partnership work arising from this group includes: joint Environmental Health (EH) and Trading Standards (TS) inspections to food manufacturers, EH collecting information for TS at catering outlets and the website [www.ratemyplace.org.uk](http://www.ratemyplace.org.uk), which includes Trading Standards compliance information as well a food hygiene score from Environmental Health.
- CEnTSA– the Central England Trading Standards Authorities, comprises of fourteen local authority Trading Standards services. The work of the group involves benchmarking and sharing best practice. The work of the Quality Standards focus group involves food and agricultural issues, and runs periodic joint exercises. In Staffordshire we actively participate in this group and in 2010/11 we will be involved in a project in partnership with the Feed and Animal Health Groups investigating claims made on animal products e.g. local, free range etc. plus a sampling project looking for pork proteins in Halal food. We will also participate in the partnership work with the Department of Health and the School Food Trust auditing school meals at Secondary Schools. A Senior Enforcement Officer from the Farming & Agriculture team chairs the CEnTSA Feed Liaison Group.
- Staffordshire's Scientific Services regularly participates in collaborative research / sampling projects, often co-ordinating these across the West Midlands in conjunction with the Food Standards Agency.
- Two members of staff are members of the Association of Public Analysts. This is a national body that represents public analysts on various national committees on food safety matters.
- To maintain the official laboratory status, recognised within the EU, Scientific Services maintains accreditation through UKAS and performs well in the FAPAS food proficiency scheme.
- The County Manager, Healthier Communities is a Member of the Staffordshire Chief EHOs Group which deals with any major food safety issues. The group is also looking at ways of working to reduce burdens on business in line with the Hampton report.
- A Business Support Officer is a member of the LACORS Food Labelling group.
- The Farming and Agriculture Team participate in the Central England Animal Health and Welfare Group as well as a Local Liaison group with Stafford Animal Health regional Office

Health Development / Food Strategy

- The Department leads and Chairs the Staffordshire Health Development Group and the Eat Well in Staffordshire partnership consisting of representatives from the District Councils, County Council and the two Staffordshire Primary Care Trusts.
- Member of the Local Food Strategy sub-group investigating the sourcing of locally produced food to local food initiatives particularly to benefit socially excluded communities and public procurement.
- Member of the West Midlands Regional Food Policy Group and it's Food Access sub-group
- Maintain links to the Economic Regeneration Team's work on rural economy through Trading Standards input on 'Taste of Staffordshire' and Animal Health and Welfare links to farmers.
- Joint appointment of both Directors of Public Health in the County as advisors to the County Council with agreed work programmes focusing on food and other public health priorities.
- Participation in local strategic partnerships in County Districts focusing on food and other public health priorities and projects determined by the LAA.
- Partners in formal arrangement for the provision of Scientific Services with Leicestershire County Council.

### **3.9 Food and Feeding Stuffs Safety and Standards Promotion**

Staffordshire County Council communicates food matters through press releases and other press coverage, and augments this through its range of advice and information material. Much of this work is reactive, based on up to date information and issues arising such as food alerts, health promotion campaigns and, results of sampling projects and changes to legislation.

In 2010/11 we will:

- Roll out the Nurturing Health Award within Staffordshire. The speed of roll out will depend on the capacity within the Health Development Team and PCT to provide the necessary training and support to the Early Years providers, as well as the capacity of the relevant District Council to provide the auditing function for the award. So far the roll out has been agreed for Stafford Borough and it South Staffordshire District and East Staffordshire Borough are likely to participate.
- Pilot an award for Care Homes for older people. The award criteria have been agreed by a steering group which includes representatives from the PCT, District Councils, Social Services and Care Home Managers. The group is chaired by the Health Development Team. The award includes food provision, dietary screening,

physical activity and oral health. The award is to be piloted in Cannock as part of the Cannock One partnership.

- Work in partnership with Development Services Directorate to establish a 'Made in Staffordshire' brand which will be available for both food and non-food businesses.
- Watchdog Use-by surveys, use volunteers to monitor compliance with use-by date requirements.

Other promotional events will go ahead during the year, potentially in partnership with PCTs, also involving Community Watchdogs.

It is estimated that promotional work will take 2 officers (fte), from the Health Development team to carry out this work, plus other officers as needed.

## **SECTION 4: Resources**

### **4.1 Financial Allocation**

The estimated cost of providing Trading Standards for 2010/11 is £2.52 million. £146700 of the budget is set aside for sampling and analysis with the majority of the sum being paid to Scientific Services for food and agricultural work with a proportion being set aside to monitor the food supplied to and by the County Council. Scientific Services also undertake analytical work for food and agriculture feeding stuffs from a number of other local authorities and other external clients.

### **4.2 Staffing Allocation**

The number of staff who hold qualifications needed to demonstrate competency in accordance with the Food Safety Act Code of Practice is as follows:

13 Trading Standards Officers, who hold the Diploma in Trading Standards 4 Enforcement and Animal Health Officers, who hold the Diploma in Consumer Affairs including the Food and Agricultural Standards paper, 2, who hold the DCA Certificate of competence in relation to Food and Agriculture. Only member of staff holds the Lead Assessor qualification/has attended a Food Standards Agency Factory Inspections Course to carry out high risk inspections. All staff involved directly in food enforcement have maintained the 10 hours per annum Food training needed to maintain competence in food standards work. As the Teams enforce a wide range of legislation, none of these officers work full time on food. The full-time equivalent is 5.8.

In addition to the staff directly involved in food standards and feeding stuffs work, support is provided by a Community Food Co-ordinator, who is a Registered Dietitian, and the County Manager Healthier Communities who is a Chartered Environmental Health Practitioner.

### **4.3 Staff Development Plan**

Community Services is accredited to Investors in People through the accreditation covering the Social Care & Health Directorate. Personal development reviews are held with all members of staff twice each year during which their training and development needs are assessed.

All officers involved in Food Enforcement receive 10 hours food training per year in accordance with the Food Safety Act Code of Practice. It is likely that the training this year will be based around a proposed training organised by CEntSA and the FSA.

Currently there is 1 officer studying the DCATS food module and 4 officers studying for the DCATS feeding stuffs module.

In addition, other training opportunities will be taken up when they arise.

## **SECTION 5: Quality Assessment.**

### **5.1 Quality Assessment**

Staffordshire County Council's Trading Standards Service is accredited to ISO 9000:2000, for all operational aspects, including food standards work. The Quality Documentation includes procedures to ensure compliance with The Standard and Food Safety Act Code of Practice. Consequently, all aspects of food standards work are subject to regular, internal and external audit.

The service is also accredited to Investors in People.

Community Services operates a system of business and consumer satisfaction questionnaires, to monitor the satisfaction levels of the users of the service.

## **SECTION 6: Review**

### **6.1 Review against the Service Plan**

Performance is reviewed by the Directorate Management Team at the half-year and year-end. In addition, progress against the targets set in the Community Services Service Delivery Plan is reviewed monthly at meetings of the Community Services Management Team.

#### **Performance assessment**

An analysis has been carried out of the performance indicators, targets and activities identified in the Service Plan for the service year 2009/10:

<b>Area of Work</b>	<b>Performance</b>
Interventions	<ul style="list-style-type: none"><li>○ 100% of high risk premises have received an inspection and we are on target for 44% of medium risk premises to have been subject to an intervention at year end.</li><li>○ The premises who were due an unannounced monitoring or surveillance visit generally received a partial inspection as the officers felt is easier to be upfront, and announce their presence, dealing with the documentation on site, rather than by sending a letter on return to the office.</li></ul>
Partnership work with District Council EHOs	<ul style="list-style-type: none"><li>○ Joint inspections to food manufacturers took place in Staffordshire Moorlands and Stafford Districts.</li><li>○ Caterers Questionnaires have been completed by EHOs in all Districts.</li></ul>
Food and Feed sampling	<ul style="list-style-type: none"><li>○ The proposed sampling took place to plan apart from the planned samples for the seasonal slaughter survey and Care Home Award, which has been put back to 10/11. Food and feed samples were also taken as part of the FSA funded imported food and feed sampling programme.</li></ul>
Food Standards and Health promotion	<ul style="list-style-type: none"><li>○ The promotion of the Healthy Start Scheme at retailers throughout the county has been completed, including markets. An evaluation of the effectiveness of this work is pending.</li><li>○ The Care Home Award has been agreed and businesses in Cannock signed up for the pilot.</li><li>○ The Nurseries Award pilot, 'Nurturing Health' has been evaluated and has been identified example of good practice in obesity prevention for the under 5's in the Children's Healthy Weight Commissioning Framework in Staffordshire.</li><li>○ The work on promotion of locally produced food has not yet gone ahead due to the change in the Council, with the new Executive requesting a more general Made in Staffordshire scheme.</li><li>○ Watchdog Use-by surveys took place in Lichfield.</li><li>○ 8 health promotion events around the County during the Watchdog Forums in July. These events will utilise Food</li></ul>

	Standards Agency materials highlighting the dangers of excessive saturated fat in the diet. This resulted in requests for 2 further talks to consumer groups, which were subsequently held.
Food Incidents	The service has been involved in 3 incidents involving food originating in Staffordshire.

## **6.2 Identification of any variation from the Service Plan**

See 6.1 above.

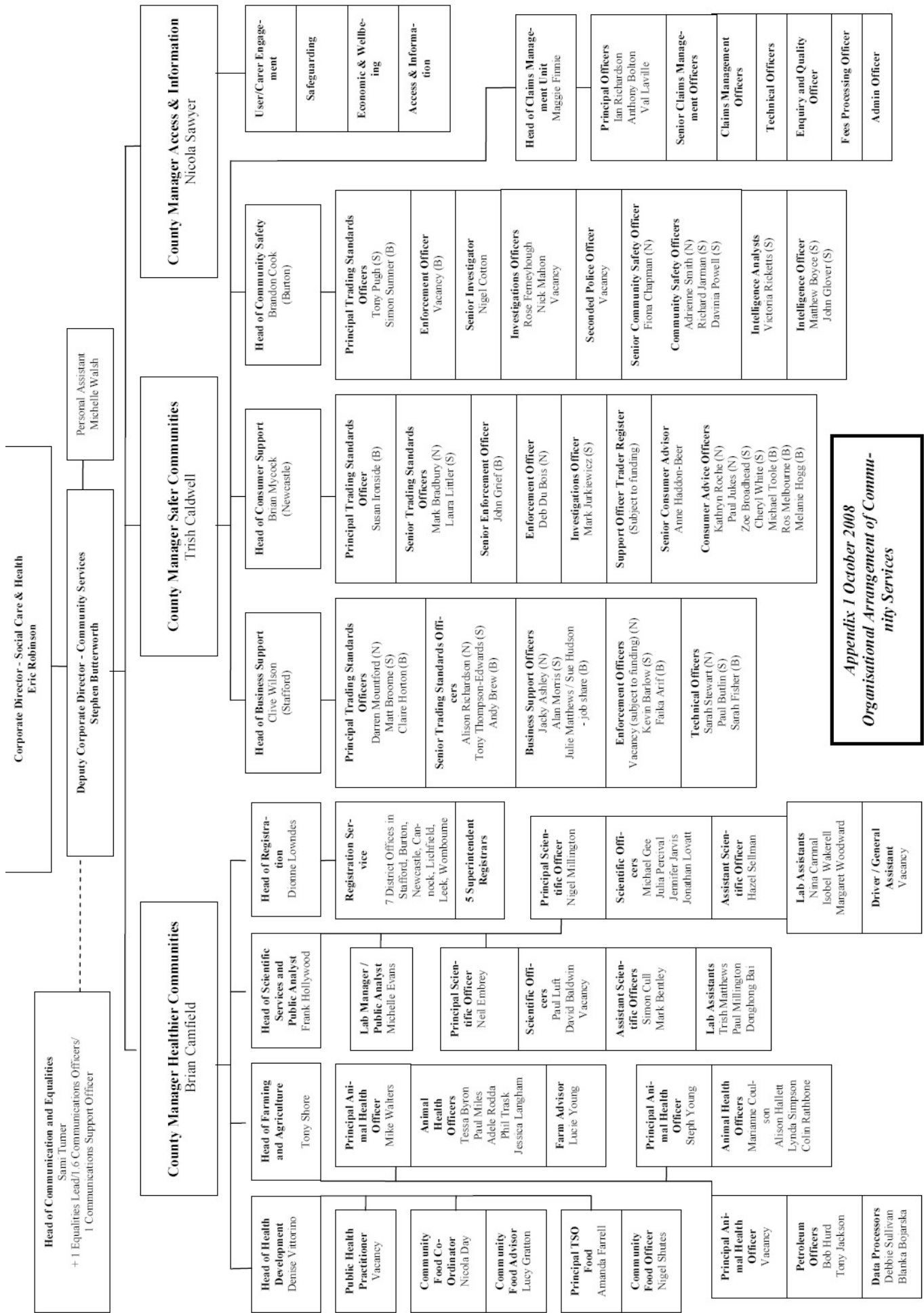
A survey of fish and chip shops in Burton on Trent was carried out following the publicity suggesting that substitution of cod with cheaper fish was occurring. This survey found no problems in this area.

Watchdog volunteers staffed displays at three libraries and a children's centre for CASH salt awareness week.

Audits of the school meal provision at two primary schools took place in partnership with the School Food Trust, CEnTSA and the Department of Health.

## **6.3 Areas for Improvement**

Joint visits to food manufacturers were not possible in some Districts due to difficulties in co-ordinating the timing of interventions, plus some officers believing that businesses would prefer separate inspections. It is intended to address this issue in 2010/2011 by agreeing premises and dates for interventions, then writing to the businesses giving the option of a joint inspection early in the financial year.



*Appendix 1 October 2008*  
**Organisational Arrangement of Community Services**

### Sampling of Food and Other Materials for 2010/11

The total budget for all sample analysis in 2010/11 is £155,000. The programme includes £84,000 on analysis of food samples plus a further £44,000 on feeding stuffs analysis.

Food Sampling	Cost per sample (£)	No. of samples	Total cost £000s
Foods consumed by vulnerable consumers – elderly – Caring for Health Award	400	70	28
Business support inc Home Authority sampling	200	180	36
Complaint samples / following complaint		50	
Portion size survey	220	30	6.6
CEnTSA pork proteins in Halal products	175	20	3.5
Contaminants in Soy Sauce	190	10	1.9
Business Support Team project			8
Milk	100	10	1
<b>Totals</b>			<b>85</b>

The money set aside for the Business Support Team project is to enable the team to respond in a reactive way to national trend, incidents and alerts.

#### Other sampling costs for 2010/11:

Sampling	Cost per sample (£)	No. of samples	Total cost £000s
Animal Feeding Stuffs from farms and mills	400	110	44
Electric Blanket testing		2500 approx	16
Consumer goods (business support / complaint / survey samples)	variable		10
<b>Total</b>			<b>70</b>

In addition to the above work food and feeding stuffs samples will be taken as part of the Food Standards Agency Imported Food Sampling programme. The analysis of these samples will be paid for by the FSA.