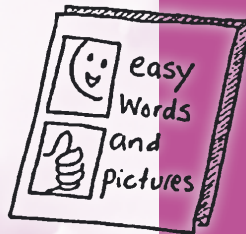


Do you have a learning disability?



Can we help you?

Easy to read



Staffordshire
County Council



INVESTOR IN PEOPLE

The Learning Disability Team

Can we help you?

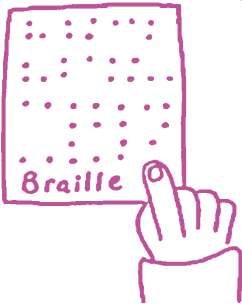
You can get this information



on tape



In sign language



In Braille



In different languages



If you would like this information please
phone: 01785 276900

What do we do?



We help and support adults with learning disabilities.



If you are having a lot of problems someone can visit you to see if we can help.



We have social workers that only work with you.

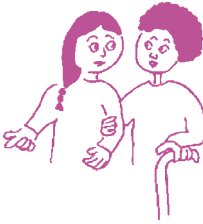


We know about Valuing People and understand about your rights, your choices and your needs.

We work with these people:



- You



- Carers



- Housing



- College and work



- Day services



- Community health teams



- Community living teams

We can help you with:



- Leaving school or college



- Housing



- Jobs



- Things to do in the daytime



- Independent living



- Respite care



- We are open on Monday to Friday.



- From half past eight in the morning



- Until five o'clock in the afternoon. And four thirty on Fridays



- If you need help at other times phone the emergency duty service on 01785 354030.



- We have lots more information about how we can help you. Please ask at one of our offices.



- Tell us about the help we give you. If you are not happy we will try to sort it out.

Biddulph Office

Councils Connect

Town Hall, High Street, Biddulph, Stoke-on-Trent, ST8 6AR

Tel: 01782 297810 - Fax:01782 297815

Minicom: 01782 297937

Email: biddulph.socialservices@staffordshire.gov.uk

Burntwood Area Office

Sycamore Road, Chasetown, Burntwood, WS7 4RR

Tel: 01543 510410 - Fax:01543 510437

Email: burntwood.socialservices@staffordshire.gov.uk

Burton Area Office

1-3 St. Paul's Square, Burton on Trent, DE14 2EF

Tel: 01283 239888 - Fax: 01283 239635

Email: burton.socialservices@staffordshire.gov.uk

Cannock Area Office

Ivy House, 202 Wolverhampton Road, Cannock, WS11 1AT

Tel: 01543 510300 - Fax: 01543 510350

Email: cannock.socialservices@staffordshire.gov.uk

Cheadle Office

Council Offices, Leek Road, Cheadle, ST10 1JF

Tel: 01538 483800 - Fax: 01538 483823

Email: theadle.socialservices@staffordshire.gov.uk

Codsall Area Office

Histons Hill, Codsall, WV8 1AA

Tel: 01902 434000 - Fax: 01902 434005

Email: codsall.socialservices@staffordshire.gov.uk

Kidsgrove Area Office

Town Hall, Liverpool Road, Kidsgrove, ST7 4EH

Tel: 01782 296705 - Fax: 01782 296724

Email: kidsgrove.socialservices@staffordshire.gov.uk

Leek Area Office

County Services Building, Fountain Street, Leek, ST13 6JR

Tel: 01538 483112 - Fax: 01538 483145

Email: leek.socialservices@staffordshire.gov.uk

Lichfield Area Office

Lombard Court, Lombard Street, Lichfield, WS13 6DP

Tel: 01543 510800 - Fax: 01543 510817

Email: lichfield.socialservices@staffordshire.gov.uk

Newcastle Area Office

The Civic Offices, Merrial Street, Newcastle, ST5 2AG

Tel: 01782 296005 - Fax: 01782 296024

Email: newcastle.socialservices@staffordshire.gov.uk

Rugeley Area Office

Council Offices, Anson Street, Rugeley, WS15 2BA

Tel: 01889 256016 - Fax: 01889 256034

Email: rugeley.socialservices@staffordshire.gov.uk

Stafford Area Office

The Business Centre, Madford Retail Park, Foregate Street, Stafford ST16 2PA

Tel: 01785 276800 - Fax: 01785 276880

Email: staffordc&f.socialservices@staffordshire.gov.uk

Tamworth Area Office

Marmion House, Lichfield Street, Tamworth, B79 7BX

Tel: 01827 475506/7 - Fax: 01827 475509

Email: tamworth.socialservices@staffordshire.gov.uk

Uttoxeter Area Office

63 High Street, Uttoxeter, ST14 7JQ

Tel: 01889 256300 - Fax: 01889 256326

Email: uttoxeter.socialservices@staffordshire.gov.uk

Thanks go to The Self Advocacy Project for the copy.

These pictures are from the CHANGE Picture Bank.

Website: www.changepeople.co.uk