

Social Care and Health Directorate

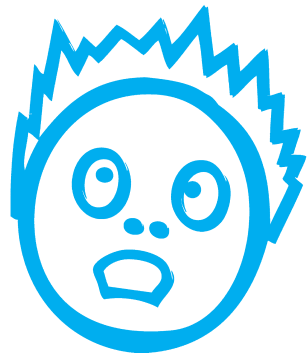
# Complaint Form



If you are sad



If you are angry



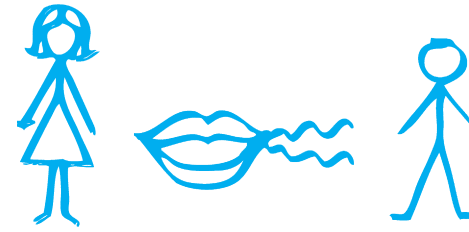
If you are frightened



It is good to say



**This is Kate  
The Complaints  
Manager**



**Can Kate speak to  
someone else about  
this?**

Yes  No



**Her job is to help you  
with your complaint**



**Their name is**



**My name is**



**Phone**



**I live at**



**Post this to Kate**



**Phone**

Symbols used in this leaflet are based on the Rebus System

December 2008  
FMS 211



Corporate member of  
Plain English Campaign.  
Committed to clearer communication.

Business Reply Service  
Licence Number  
XF 32/12

2

Confidential

Complaints Services Manager  
Social Care and Health Directorate  
Wedgwood Building  
Tipping Street  
STAFFORD ST16 2DH