

Census 2021 - Initial Results

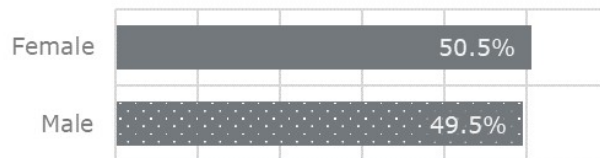


Staffordshire population

↑ **876,100** ↑

Grown by 27,600 since 2011 Census

Population by sex*



Unchanged from Census 2011

Population by age

Age group	2021	Change
Aged 0-19	185,800	↓ -4%
Aged 20-64	496,200	↓ -1%
Aged 65+	194,100	↑ +24%

Local populations

District / Borough	2021	Change
Cannock Chase	100,500	+3.1%
East Staffordshire	124,000	+9.2%
Lichfield	106,400	+5.7%
Newcastle-under-Lyme	123,300	-0.5%
South Staffordshire	110,500	+2.2%
Stafford	136,800	+4.5%
Staffordshire Moorlands	95,800	-1.3%
Tamworth	78,600	+2.3%

Next Census releases (Autumn/Winter 2022)
Topic summaries and area profiles including:
Demography and migration, ethnicity, education,
health, unpaid care, labour market insights, gender
identity and sexual orientation.



Approx. 2.3 persons per household
(Compared to 2.4 in 2011)



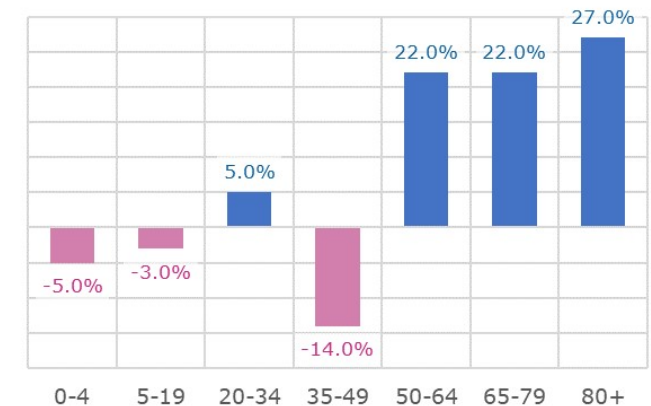
Old-age care ratio

↓ **2.6** working age (20-64) adults **to every** **1** pension age (65+) adult

Compared to 3.2 to 1 in 2011 and 3.8 to 1 in 2001

Change by age-groups

Percentage change between 2011 and 2021



Contact details

For any enquiries please contact the Insight Team:
insight.team@staffordshire.gov.uk

*Census guidance states "sex as recorded on an individual's legal documents". Gender-identity information will come in further Census 2021 releases