



# Census 2021 - Initial Results Briefing



## Key Headlines

- On Census Day, 21 March 2021, the size of the resident population in Staffordshire was 876,100.
- Staffordshire's population grew by 3.3% since the last census in 2011, equating to just under 28,000 additional residents, and represents a smaller increase than seen across England and Wales of 6.3%.
- Six districts and boroughs have seen their population grow, with the highest growth in East Staffordshire, which increased by 9.2% from 2011. Conversely Staffordshire Moorlands and Newcastle have seen a small decline of under 2%.
- The trend of population ageing has continued; the highest population growth is among older age groups, with those aged 65+ increasing by 24%, from just under 157,000 in 2011 to just over 194,000 in 2021. An ageing population is likely to have an impact on all our services, in particular demand for Adult Social Care services.
- The ratio of working age adults to pension age adults has declined between 2011 and 2021, from 3.2 to 1 in 2011 to 2.6 to 1 in 2021. Combined with an ageing population, this reduction is likely to have further implications in terms of provision for informal and unpaid care to the elderly.
- The number of children and young people (0-19) decreased by 4%, with a particular decline of 14% in those aged 15-19. Whilst this may mean demand on services remains relatively stable, the current cost of living crisis and long term impacts of Covid are likely to impact this age group as much as any other.
- Staffordshire has seen the number of households grow, with 375,200 occupied households, representing an increase of 5.6% since 2011. The largest increases were in the three district areas to record the biggest population growth.



## Introduction

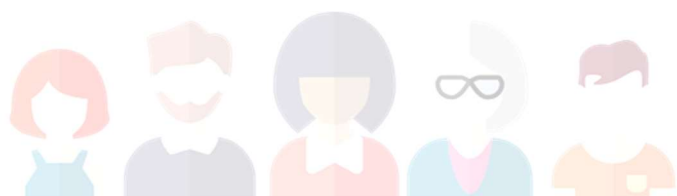
Census Day took place on the 21<sup>st</sup> March 2021, with results providing a detailed snapshot of the population and its characteristics at a point in time. This first release of data, on 28<sup>th</sup> June 2022, provides household and population estimates by age and gender, for England and Wales and local authorities.

## Methodology and Response Rate

Census 2021 was the first digital-by-default census in the UK, and achieved an overall response rate of 97%, exceeding the target of 94%. All districts and boroughs achieved a response rate of between 97% and 99%, with an overall response of 98% for Staffordshire.

The Office of National Statistics (ONS) took a flexible approach to data collection to enable them to respond to changing circumstances, such as the coronavirus (COVID-19) pandemic. Their data quality control validation strategies helped to detect and resolve any issues, and for the first time, local government organisations were asked to help assess the data before publication, with Staffordshire County Council participating in this process.

ONS has recognised the challenge of undertaking the 2021 Census during the Coronavirus Pandemic, with Census Day (21<sup>st</sup> March) coming at a time when Covid restrictions were still in place across the country. ONS advises that for most of the population, this would not have affected where they consider themselves resident; however there is potential for some 'distortion' such as some students and those in urban areas recording changes to where they lived, either on a temporary or a permanent basis.



## Results

The resident population of Staffordshire has increased by 3.3% over the last 10 years to 876,100. This is a smaller increase than across England and Wales as a whole, where the population has increased by 6.3% to 59,597,300.

Across Staffordshire's districts and boroughs, the largest increases were recorded in East Staffordshire (an increase of 9.2%, equal to over 10,000 additional residents) and Lichfield (an increase of 5.7%, equal to just under 6,000 additional residents). Population fell in both Staffordshire Moorlands (a 1.3% fall, equal to over 1,000 residents) and Newcastle-under-Lyme (a 0.5% fall, equal to just under 600 residents).

**Figure 1** - Population of Staffordshire by district 2021, including comparison with results from the previous Census.

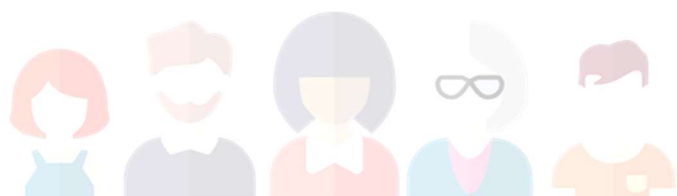
District/Borough	2021	2011	Change	% Change
Cannock Chase	100,500	97,462	3,038	3.1%
East Staffordshire	124,000	113,583	10,417	9.2%
Lichfield	106,400	100,654	5,746	5.7%
Newcastle-under-Lyme	123,300	123,871	-571	-0.5%
South Staffordshire	110,500	108,131	2,369	2.2%
Stafford	136,800	130,869	5,931	4.5%
Staffordshire Moorlands	95,800	97,106	-1,306	-1.3%
Tamworth	78,600	76,813	1,787	2.3%
<b>Staffordshire</b>	<b>876,100</b>	<b>848,489</b>	<b>27,611</b>	<b>3.3%</b>

Please note: District/borough figures for 2021 do not sum to the Staffordshire total. This is because ONS figures are rounded to the nearest hundred for each individual area.

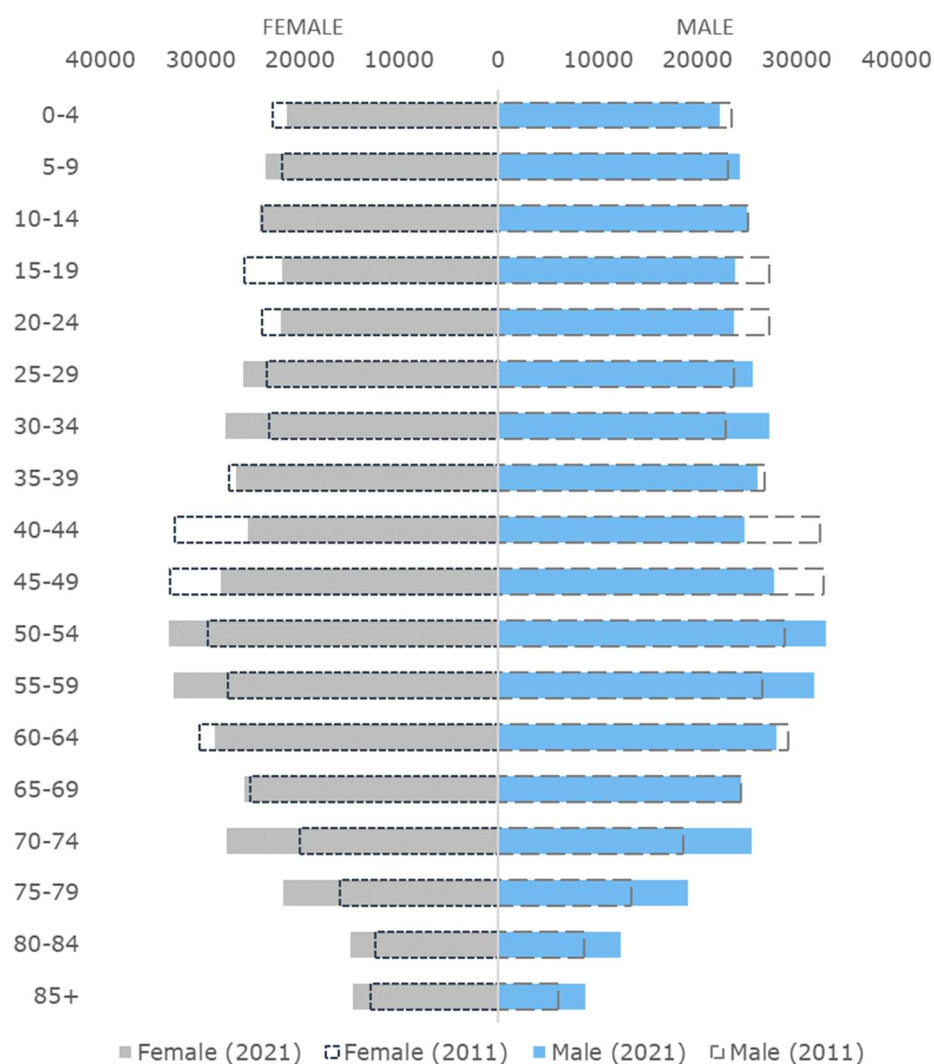
The increase in population in Staffordshire since the 2011 census is predominantly due to an ageing population, with the number of residents aged 65 or over increasing by around 37,000 (23.7%).

Conversely, there has been an overall reduction of around 7,000 (3.5%) children and young people (aged 0-19). However, within this age band there is some variation; the 5-9s have increased by 3,000 (6.6%), whereas the older 15-19 age group has fallen by 7,000 (13.6%).

The following chart highlights the change in population across Staffordshire within five-year age bands.



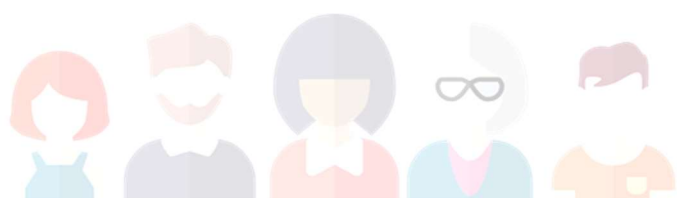
**Figure 2** – Change in population of Staffordshire by gender and five-year age band



The change in population by age group shows some very different patterns across each of Staffordshire’s districts. For example, overall the number of residents in the 5-19 age group has decreased by 3%, however this ranges from an increase of 7% in East Staffordshire to a decrease of 10% in South Staffordshire.

East Staffordshire also records one of the lowest increases in those aged 80 and over – 19% compared to a high of 40% in Lichfield and a Staffordshire wide increase of 27%.

In Staffordshire, the ratio of working age adults to pension age adults has declined considerably between 2001 and 2021 - with one fewer working age adult per pension age adult. This may have implications for the extent to which



older adults are able to be supported by informal care outside of the care system. When further census data is made available, it will be important to look in detail at provision of unpaid care, and consider any wider implications for the county.

**Figure 3** – Change in population for Staffordshire’s Districts by broad age band

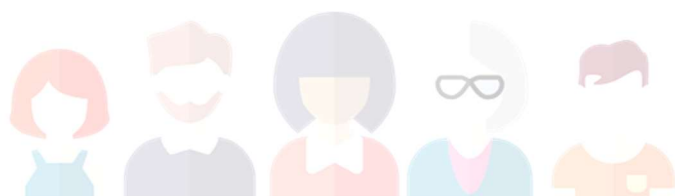
District/Borough	0-4	5-19	20-34	35-49	50-64	65-79	80+
Cannock Chase	▼ -5%	▼ -6%	▲ 7%	▼ -18%	▲ 17%	▲ 25%	▲ 25%
East Staffordshire	▼ 0%	▲ 7%	▲ 12%	▼ -5%	▲ 18%	▲ 21%	▲ 19%
Lichfield	▼ -2%	▼ -1%	▲ 11%	▼ -13%	▲ 9%	▲ 22%	▲ 40%
Newcastle-under-Lyme	▼ -8%	▼ -5%	▼ -1%	▼ -16%	▲ 5%	▲ 18%	▲ 21%
South Staffordshire	▲ 0%	▼ -10%	▲ 11%	▼ -19%	▲ 7%	▲ 20%	▲ 37%
Stafford	▼ -4%	▼ -1%	▲ 2%	▼ -12%	▲ 11%	▲ 24%	▲ 26%
Staffordshire Moorlands	▼ -12%	▼ -6%	▼ -1%	▼ -24%	▲ 4%	▲ 22%	▲ 26%
Tamworth	▼ -13%	▼ -2%	▲ 1%	▼ -10%	▲ 5%	▲ 35%	▲ 27%
<b>Staffordshire</b>	▼ -5%	▼ -3%	▲ 5%	▼ -14%	▲ 10%	▲ 22%	▲ 27%

## Occupied Households

As well as recording the number of residents, the Census also provides information relating to the number of occupied households (those with at least one usual resident). There were 375,200 occupied households recorded in Staffordshire during 2021, an increase of 5.6% over the last 10 years; just under 20,000 additional households. This is lower than the increases recorded in both the West Midlands (5.9%) and England and Wales (6.1%).

The largest increases were recorded in the three district areas to record the biggest population growth (East Staffordshire, Lichfield District and Stafford Borough).

There are now an average of 2.3 occupants per Staffordshire household, down from 2.4 in 2011. Averages are relatively consistent across the county, with all districts and boroughs having an average of either 2.3 or 2.4.



**Figure 4** - Occupied households in Staffordshire by district 2021, including comparison with results from the previous Census.

District/Borough	2021	2011	Change	% Change
Cannock Chase	43,500	40,664	2,836	7.0%
East Staffordshire	51,300	47,251	4,049	8.6%
Lichfield	45,600	41,224	4,376	10.6%
Newcastle-under-Lyme	53,400	52,574	826	1.6%
South Staffordshire	46,100	44,458	1,642	3.7%
Stafford	60,000	55,703	4,297	7.7%
Staffordshire Moorlands	42,400	41,772	628	1.5%
Tamworth	32,900	31,617	1,283	4.1%
<b>Staffordshire</b>	<b>375,200</b>	<b>355,263</b>	<b>19,937</b>	<b>5.6%</b>

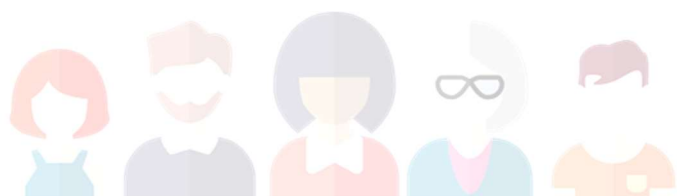
## Population Density

Overall population density (the number of people for each square kilometre of space) in Staffordshire is considerably lower than the rate for England: with 100 fewer persons per km<sup>2</sup> in Staffordshire (334 compared to 434 across England).

There is considerable variation across districts and boroughs, ranging from 2,548 persons per km<sup>2</sup> in Tamworth (the county's most urban area) compared to 166 persons per km<sup>2</sup> in Staffordshire Moorlands (the most rural area).

**Figure 5** – Population density (people per square kilometre) Staffordshire by district 2021

District/Borough	Persons per square kilometre
Cannock Chase	1,274
East Staffordshire	320
Lichfield	321
Newcastle-under-Lyme	584
South Staffordshire	271
Stafford	229
Staffordshire Moorlands	166
Tamworth	2,548
<b>Staffordshire</b>	<b>334</b>





## Census 2021 - Future Data Releases

From October to the end of 2022, the Office for National Statistics plans to release topic summaries in a staggered approach, with some data available below district and borough level. These will be released every two to three weeks, in the following order:

- Demography and migration
- Ethnic group, national identity, language, and religion
- UK armed forces veterans
- Housing
- Labour market and travel to work
- Sexual orientation and gender identity
- Education
- Health, disability, and unpaid care

A detailed three-year Census 2021 analysis programme will start after the release of topic summary data.

As this data is released, the Insight Team will undertake and publish more detailed analysis, including identifying some of the long-term impacts of Covid such as travel to work patterns and employment profiles.

### Useful Links

The ONS data is available to explore and use now, with a number of helpful resources made publicly available.

- Access to the ONS data tables can be found [here](#).
- ONS Local Authority interactive guide is available [here](#).

For more information contact the Insight Team at:  
[insight.team@staffordshire.gov.uk](mailto:insight.team@staffordshire.gov.uk).

